



Coronavirus Disease 2019 (COVID-19)

National Surveillance Report as of 14/07/2020

Date of publication: 16/07/2020

Produced by the Epidemiological Surveillance Unit of the Ministry of Health

Contributors: Annalisa Quattrocchi, Ioannis Mamais, Valentinos Silvestros, Anna Demetriou (Health Monitoring Unit), Maria Athanasiadou (Health Monitoring Unit), Theopisti Kyprianou (Health Monitoring Unit), Androulla Styliani, Sotiroula Sotiriou, Fani Theofanous, Christos Charalambous, Ioanna Gregoriou, Maria Koliou, Georgios Nikolopoulos and Elisavet Constantinou

Scientific Committee: Elisavet Constantinou, Constantinos Constantinou, Niki Paphitou, Georgios Nikolopoulos, Maria Koliou, George Panos, Eirini Christaki, Zoi - Dorothea Pana, Constantinos Tsioutis, Leondios Kostrikis, Peter Karayiannis, George Petrikkos, Petros Agathangelou, George Mixides

Suggested citation: Epidemiological Surveillance Unit of the Ministry of Health, Cyprus. National Situation Report. Coronavirus Disease 2019 (COVID-19), 16 July 2020.



Summary

- As of July 14th, a total of 1,024 COVID-19 cases and 26 deaths (case fatality rate: 2.5%) have been reported in the Republic of Cyprus.
- Among these cases, 18.8% are health-care workers (n = 192) - 3.9% physicians (n = 40), 9.5% nurses (n = 97), 1.3% other health occupations (n = 13), and 4.1% auxiliary staff (n = 42).
- The median age of cases is 44 years (Interquartile range - IQR: 30-58 years); 51.8% are male and 48.2% are female.
- Overall, of 879 cases for which the place of exposure was known, locally acquired infections (index cases and close-contacts of confirmed cases) were 687 (78.2%) - of these 8.3% (n = 57) were related to a health-care facility (General Hospital in Pafos) and 12.2% (n = 84) were reported in Aradippou municipality.
- In the last 14 days (since 1th July, included), of 26 cases reported, 62% (n = 16) were imported, and 38% (n = 10) were locally-acquired.
- In total, 17.7% (n = 181) of cases received hospital care, and two (1.1%) are still hospitalised (either for treatment of COVID-19 symptoms or for pre-existing conditions). Median age of all hospitalized patients is 62 years (IQR: 48-73 years) and 64.6% are males.
- There are no patients in intensive care units.
- Among cases alive, 847 (84.9%) cases have recovered (without symptoms and with two negative tests following their diagnosis or released 21 days after diagnosis).
- A total of 176,174 tests have been performed as of July 14th (20,113.5 per 100,000 population).



Epidemiological surveillance in the Republic of Cyprus

Analyses are based on laboratory-confirmed cases notified to the Epidemiological Surveillance Unit of the Ministry of Health.

As of July 14th, 1,024 laboratory-confirmed cases of coronavirus disease 2019 (COVID-19) have been reported (Figure 1 and 2).

The median time between symptoms onset and date of sampling was 4 days (Interquartile range - IQR: 2-7 days). It should be noted that for 16 cases the date of sample collection was before the onset of symptoms because of immediate testing of contacts of possible and laboratory-confirmed cases.

As of July 14th, the 14-day cumulative incidence rate of COVID-19 (per 100,000 population), a measure which reflects the number of active COVID-19 cases in the population (prevalence)¹, is 3 per 100,000 population (Figure 3).

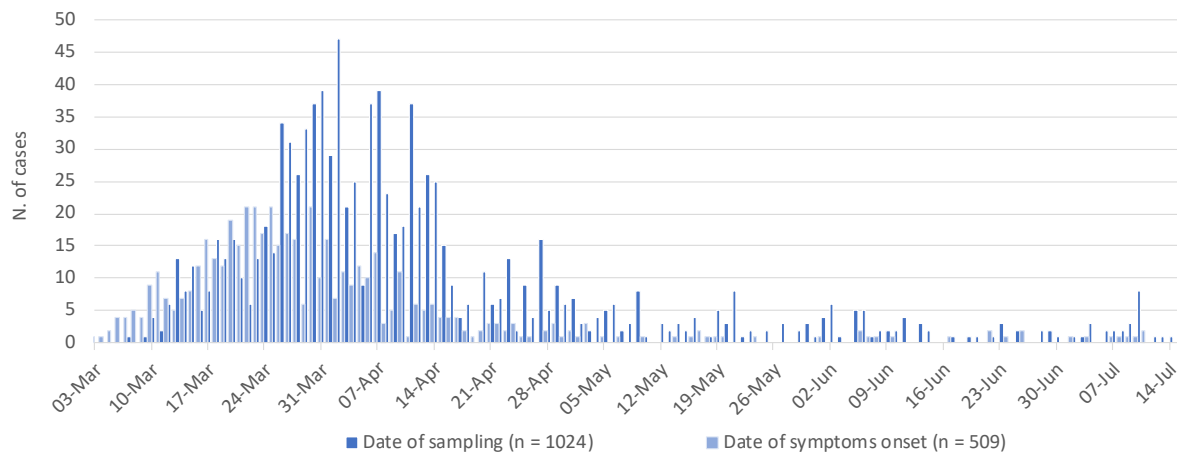


Figure 1: Number of laboratory-confirmed COVID-19 cases in Cyprus since 03/03/2020 by date of sample collection and date of symptoms onset (n = 1,024 and n = 509 with data available, respectively).

Recent data should be interpreted with caution due to the possibility that cases with date of onset within the reporting period have not yet been diagnosed.

¹Coronavirus disease 2019 (COVID-19) pandemic: increased transmission in the EU/EEA and the UK – seventh update, 25 March 2020. Stockholm: ECDC; 2020.

<https://www.ecdc.europa.eu/sites/default/files/documents/RRA-seventh-update-Outbreak-of-coronavirus-disease-COVID-19.pdf>

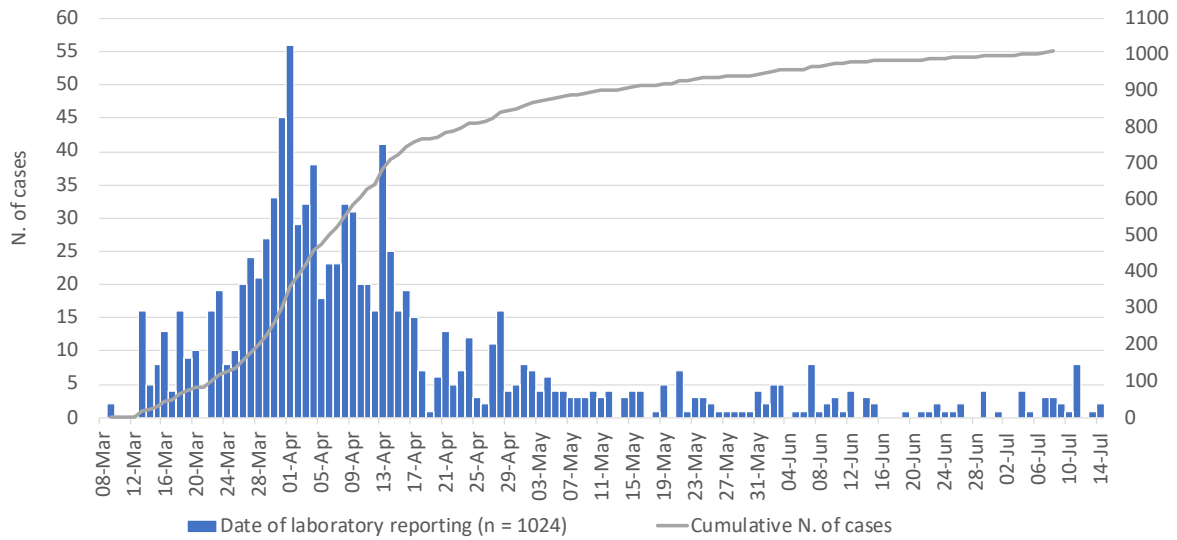


Figure 2: Number and cumulative number of laboratory-confirmed COVID-19 cases in Cyprus since 08/03/2020, by date of laboratory reporting (n = 1,024).
Recent data should be interpreted with caution due to the possibility that cases with date of onset within the reporting period have not yet been diagnosed.

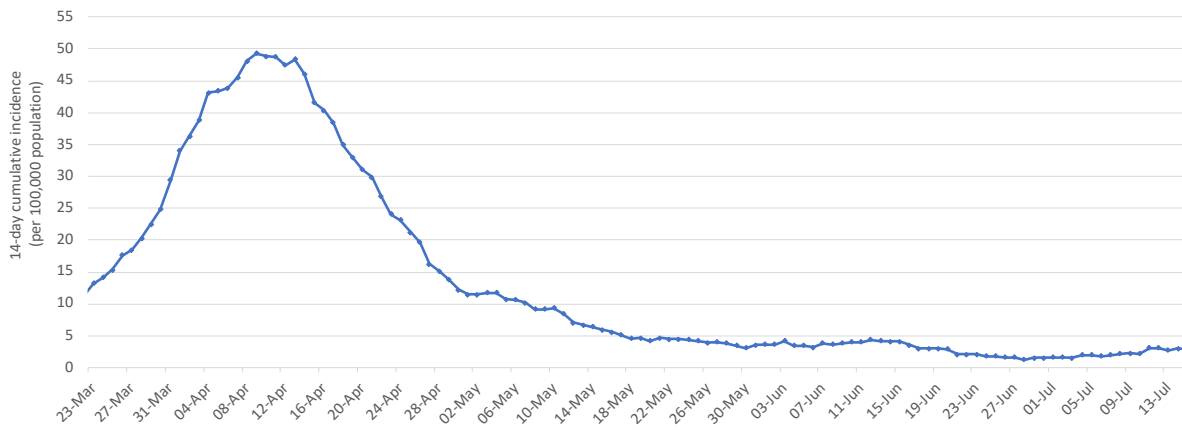


Figure 3. COVID-19 14-day cumulative incidence rate per 100,000 population (proxy of COVID-19 prevalence).
March 23rd represents the first 14th day since cases have been reported.



Characteristics of the cases

Among these cases, 51.8% are male (n = 530) and 48.2% female (n = 494).

The median age of cases is 44 years (IQR: 30-58 years). By age groups, cases included 65 infants, children and adolescents aged 0-17 years-old (6.3%), 726 adults aged 18-59 years (70.9%), and 233 persons aged 60 years and older (22.8%) (Figure 4).

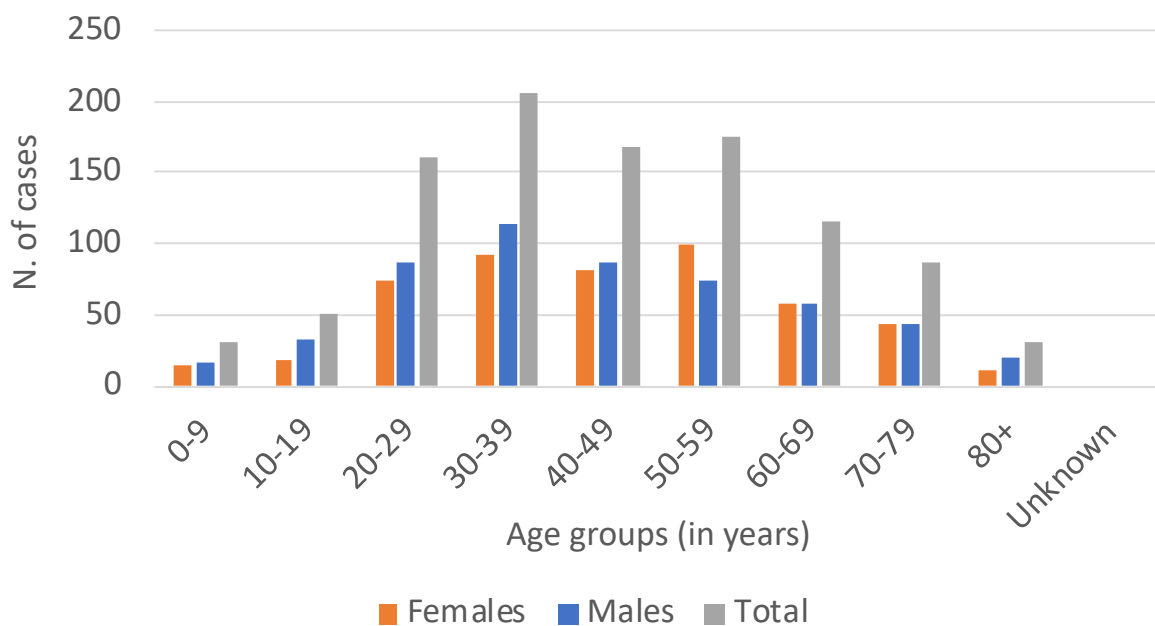


Figure 4: Laboratory-confirmed COVID-19 cases in Cyprus by sex and age groups.

Among all cases, 391 (38.2%) were reported in Nicosia district, 249 (24.3%) in Larnaka, 170 (16.6%) in Pafos, 126 (12.3%) in Limassol, 51 (5%) in Ammochostos, and 37 (3.6%) were reported either in the British bases or had a residence abroad, or information was not available (Table A1 in appendix).

Figure A1 in appendix shows the distribution of cases by postal code.

Notably, 128 cases (12.5%) were reported in Aradippou, a municipality in Larnaka district (Table A1 in appendix). Cases in Aradippou, including a cluster in a local bakery production line, are mainly males (58.6%; n = 75) and the median age is 49 years (IQR: 32-61.5 years). If the cluster is excluded, cases are mainly females (53%; n = 53) and the median age is 54.5 years (IQR: 35.5-69 years).



Among the 1,024 cases, 18.8% are health-care workers² (n = 192) - 3.9% physicians (n = 40), 9.5% nurses (n = 97), 1.3% other health occupations (n = 13), and 4.1% auxiliary staff (n = 42). Table 1 shows the distribution of health-care workers by district of residence.

Table 1: Health-care workers by district of residence (n=192).

District	Health-care worker	Physicians	Nurses	Other health occupations	Auxiliary staff
Ammochostos	16	3	7	1	5
Larnaka	43	7	24	3	9
Limassol	16	3	9	2	2
Nicosia	58	13	25	5	15
Pafos	59	14	32	2	11
Total	192	40	97	13	42

Epidemiological link

As of July 14th, place of exposure is available for 879 cases (85.8%).

In total, 21.8% (n = 192) of laboratory-confirmed COVID-19-cases had history of travel or residence abroad during the 14 days prior to symptom onset (imported). These cases have a direct link to the UK, mainly.

Locally acquired infections (index cases and close-contacts of confirmed cases) occurred in 78.2% (n = 687 of 878 with known place of exposure) of the cases, of which 8.3% (n = 57) were related to a health-care facility (General Hospital in Pafos).

Of all cases in Aradippou (Larnaka district) (n = 128), 84 (65.6%) were locally-acquired, 11 (8.6%) imported and for 33 cases (25.8%) the epidemiological link was not recorded at the moment. Table A1 in the appendix shows the number and the rate (per 100,000 population) of locally-acquired cases by district of residence.

In the last 14 days (since 1th July, included), of 26 cases reported, 62% (n = 16) were imported, and 38% (n = 10) were locally-acquired. Table B1 and Figure B1 in Appendix

² The term "health-care worker" is based on the occupation and not on the place of exposure. Health-care workers are defined as all health care professionals, allied health workers, and auxiliary health workers.



show the characteristics of cases by origin of infection and the number of cases by origin of infection in the last 14 days, respectively.

Clinical features

Of the 1,024 laboratory-confirmed COVID-19-cases, clinical information is available for 98.3% (n = 1,007), of which 35% (n = 352) reported no symptoms at diagnosis and 65% (n = 655) reported at least one symptom. The most commonly reported symptoms were:

- cough (321/994; 32.3%),
- fever (307/994; 30.9%),
- myalgia (211/993; 21.3%),
- sore throat (161/991; 16.3%),
- anosmia (111/903; 12.3%), and
- shortness of breath (110/978; 11.3%).

Other reported symptoms were diarrhoea, runny nose, and headache.

Table A2 in appendix reports the sex and age distribution of asymptomatic cases at diagnosis.

Pre-existing conditions

Information on comorbidities was available for 915 (89.4%) cases. Of these, 349 (38.1%) reported at least one comorbidity.

The most commonly reported comorbidities were:

- hypertension (130/908; 14.3%),
- diabetes (77/915; 8.4%),
- heart disease (67/909; 7.4%), and
- cancer (25/915; 2.7%).

Other reported comorbidities were immunosuppression, chronic respiratory disease, chronic kidney disease, and autoimmune disease.



Deaths

As of July 14th, 26 deaths were reported in Cyprus (Case Fatality Rate - CFR: 2.5%).

The mortality rate for COVID-19 is 3 per 100,000 population.

Eighteen deaths (73%) occurred in men and seven (27%) in women; the median age of all deaths was 75 years (IQR: 66-79 years). Nine deaths were reported among residents in Larnaka, eight in Pafos, four in Nicosia, three in Ammochostos, and two in Limassol (Appendix Table A3).

The median time from date of sampling to death was 12.5 days (IQR: 5-30 days). Figure A3 shows the Kaplan-Meier curve of the time from date of sampling to death.

For 19 deaths, COVID-19 was the underlying cause of death (COVID-19 CFR: 1.9%). Figure 5 reports the number of deaths by date.

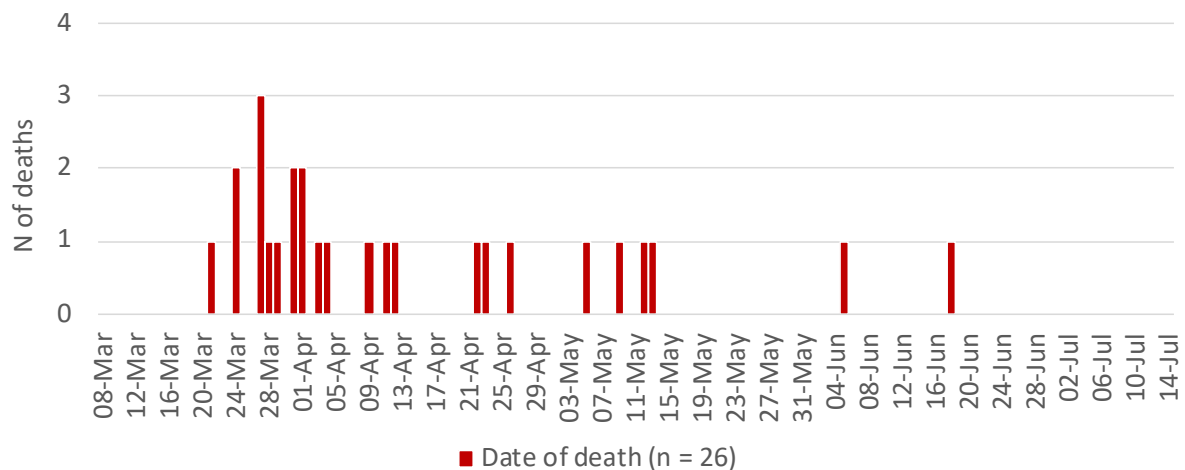


Figure 5: Number of deaths among COVID-19 cases in Cyprus by date of death (n = 26).

Hospitalization and intensive care unit (ICU) admissions³

In total, 17.7% (n = 181) of people with COVID-19 received hospital care, and two (1.1%) are still hospitalised (either for treatment of COVID-19 symptoms or for pre-existing conditions). The median age of hospitalized patients was 62 years (IQR: 48-73 years). Hospitalized cases were mainly males (n = 117; 64.6%).

Figure 6 shows the total number of first hospital admissions by date.

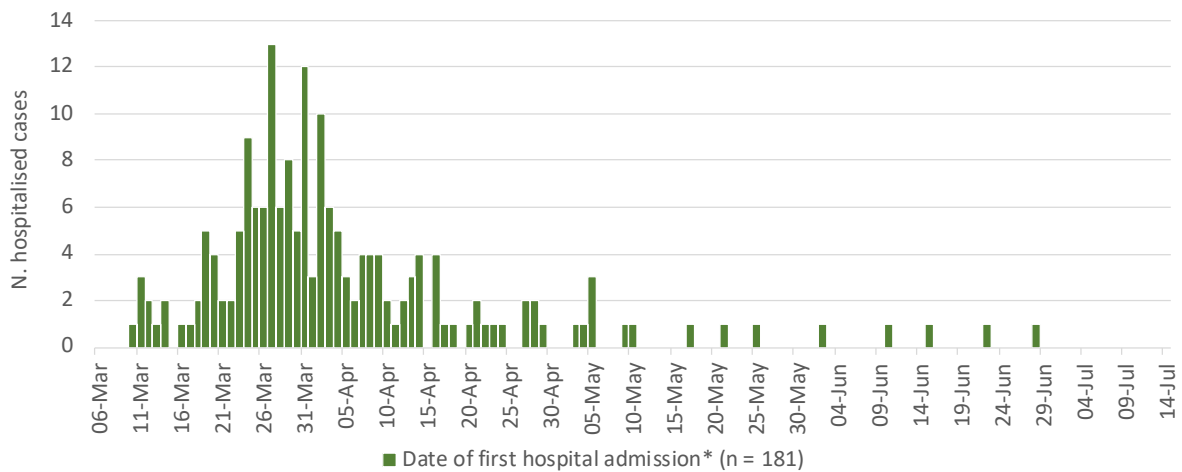


Figure 6: Number of laboratory-confirmed COVID-19 cases by date of first hospital admission (n = 181).

**Date of hospital admission was replaced with date of sampling for inpatients hospitalised prior to the beginning of the epidemic.*

Overall, 32 cases (17.7% of all hospitalized patients) have been admitted to ICU⁴, and currently there are no cases in ICU (as of July 14th).

A total of 27 ICU patients (84.4% of all ICU patients) have been intubated, and currently there no patients intubated.

The overall median length of stay in ICU (for all 32 ICU cases) was 11 days (IQR: 8-29 days). Figure A4 shows the Kaplan-Meier curve of the length of stay in ICU.

³ Data on hospitalisation and ICU are provisional and should be interpreted with caution because delay in data reporting is likely; for the construction of the curve, people are no longer in an ICU the day next to the date of their discharge, death or transfer.

⁴ Intensive care unit (ICU) refers only to the ICU in Limassol General Hospital and to the ICU in Nicosia General Hospital.



For patients who died while in ICU (n = 18), the median length of stay in ICU was 13.5 days (IQR: 8-28). Figure A5 shows the Kaplan-Meier curve of the length of stay in ICU for the people who died.

For patients transferred/ discharged alive from ICU (n = 14), the median length of stay in ICU was 10.5 days (IQR: 8-28 days).

The median age of patients ever admitted to ICU was 65.5 years (IQR: 56-75 years). ICU patients are mainly male (n = 23; 71.9%).

The characteristics of patients ever admitted to ICU are reported in Table B2 in Appendix.

The number of cases currently in ICU is 0 per 100,000 population.

Figure 7 shows the number of patients in ICU, by day and intubation. Table A4 in the appendix shows the total number of ICU admissions by date.

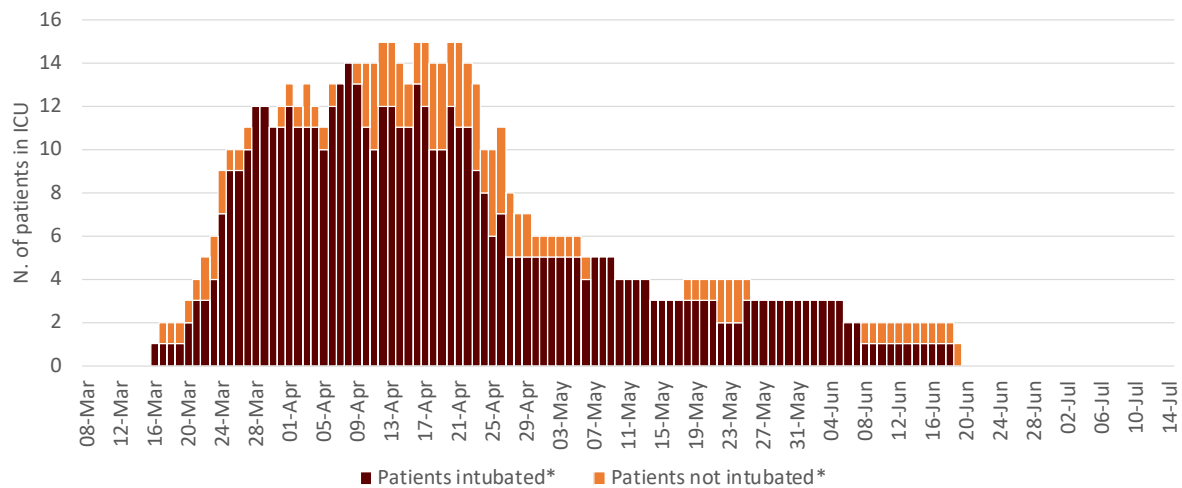


Figure 7: Number of laboratory-confirmed COVID-19 cases in ICU by date and intubation.

**Date of discharge/transfer/death included*

Recovered/released

As of July 14th, among cases alive, 84.9% (n = 847) of COVID-19 cases have recovered⁵; of which 768 (90.7%) tested negative two consecutive times, and 79 (9.3%) have been released as per the new guidelines⁶. The median time between the second negative result and the first date of sampling was 25 days (IQR: 19-37 days).

Table 2 shows the number and percentage of recovered cases and their characteristics.

Table 2: Characteristics of all cases and cases recovered/released (n = 847)

Characteristics	Total cases N	Recovered			
		Two consecutive negative tests		Released after 21 days	
		N	%	N	%
Total	1,024	768	75.0	79	7.7
Sex					
Male	530	380	71.7	39	7.4
Female	494	388	78.5	40	8.1
Age groups (years)					
0-9	31	17	54.8	8	25.8
10-19	51	39	76.5	4	7.8
20-29	161	113	70.2	8	5.0
30-39	206	159	77.2	11	5.3
40-49	167	130	77.8	14	8.4
50-59	175	146	83.4	12	6.9
60-69	116	84	72.4	14	12.1
70-79	86	62	72.1	7	8.1
80+	31	18	58.1	1	3.2
Median age in years (IQR*)	44 (30-58)	44 (31-58)		45 (29-59)	

⁵ For symptomatic cases, or for cases hospitalised, a COVID-19 case can be considered cured after the resolution of symptoms and two negative tests for SARS-CoV-2 at 24-hour interval at least.

For asymptomatic cases, or for persons isolated at home, the negative tests to document virus clearance should be obtained at a minimum of 14 days after the initial positive test (end of the quarantine period). Novel coronavirus (SARS-CoV-2). Discharge criteria for confirmed COVID-19 cases- When is it safe to discharge COVID-19 cases from the hospital or end home isolation? - Technical Report, 10 March 2020. Stockholm: ECDC; 2020.

⁶ A person is released 21 days after the initial diagnosis, if he/she has a positive test 14 days after the initial diagnosis and remains in isolation for one more week without being further tested.



Comparison with selected countries

As of July 14th, in Cyprus the reporting rate was 116.9 cases per 100,000 population, the mortality rate was 3 deaths per 100,000 population and the CFR was 2.6%.

Table 3 shows COVID-19 indicators for Cyprus and other selected countries.

Figure A2 in appendix reports the rates of cumulative tests and cases (per 100,000 population) in Cyprus and other selected countries. In Cyprus the testing rate is 20,113.5 per 100,000 population.

It should be noted that the number of cases, tests and deaths for Cyprus are aggregated and include people from abroad and the British bases, while the total population does not include inhabitants from abroad or from the British bases.

Table 3: COVID-19 indicators by selected countries, as of 14/07/2020.

Country	N. of cases [†]	N. of cases (per 100,000 pop)	N. of tests [§]	N. of tests (per 100,000 pop)	N. of deaths [†]	CFR [°] (%)	Mortality rate (per 100,000 pop)	Pop. (in thousand) [†]
Cyprus	1,024	116.9	176,174	20,113.5	26	2.5	3.0	875.9*
Italy	243,230	403.0	6,004,611	9,948.1	34,967	14.4	57.9	60,359.5
USA	3,363,056	1,022.0	41,004,275	12,460.9	135,605	4.0	41.2	329,064.9
UK	290,133	435.3	9,139,226	13,712.9	44,830	15.5	67.3	66,647.1
Greece	3,826	35.7	373,932	3,486.7	193	5.0	1.8	10,724.6
Malta	674	136.6	108,553	21,993.9	9	1.3	1.8	493.6
Sweden	75,826	741.2	520,171	5,084.7	5,536	7.3	54.1	10,230.2
Netherlands	51,038	295.3	411,972	2,383.8	6,128	12.0	35.5	17,282.2
Republic of Korea	13,512	26.4	1,420,616	2,773.3	289	2.1	0.6	51,225.3

[†]Number of cases, number of deaths and population (in thousands) for all countries, but Cyprus, as reported by ECDC at

<https://www.ecdc.europa.eu/en/publications-data/download-todays-data-geographic-distribution-covid-19-cases-worldwide>

[§]Data for Cyprus: internal communication; data for other countries: <https://www.finddx.org/covid-19/test-tracker/>

[°] CFR: Case fatality ratio.

* Data from Statistical Service of the Republic of Cyprus, 2018 ([Statistical Service of the Republic of Cyprus](#))



Acknowledgments

We thank Antry Constantinou, Christiana Soteriou, Despina Ioannou, Irene Georgiou, Maria Clerides, Tatiana Sofocleous, and Despoina Stylianou from the Ministry of Health, and the companies CELLOCK (<https://cellock.com>) and GEOMATIC (<https://geomatic.com>) for their volunteering support.



Appendix

Table A1: Laboratory-confirmed COVID-19-cases in Cyprus by district of residence and origin (n = 1,024).

District/ <i>municipality</i>	Total		Travel-related		Unknown origin		Locally-acquired			Pop.
	N	%	N	%	N	%	N	%	N (per 100,000 pop)	
Ammochostos	51	5.0	15	7.8	9	6.2	27	3.9	56.0	48,200
Larnaka	249	24.3	22	11.5	48	33.1	179	26.1	121.8	147,000
<i>Aradippou</i>	128	12.5	11	5.7	33	22.8	84	12.2	436.9	19,228
Limassol	126	12.3	43	22.4	14	9.7	69	10.0	28.2	244,900
Nicosia	391	38.2	67	34.9	48	33.1	276	40.2	80.8	341,700
Pafos	170	16.6	18	9.4	25	17.2	127	18.5	135.0	94,100
Other	37	3.6	27	14.1	1	0.7	9	1.3		
Total	1024	100	192	100	145	100	687	100	78.4	875,900

Other includes British Bases, abroad and unknown



Table A2: Sex and age distribution of asymptomatic cases at diagnosis (n = 352).

Characteristics	All cases (n = 1,024)	Asymptomatic cases (n = 352)	
	N	n	%
Sex			
Male	530	198	37.4
Female	494	154	31.2
Age groups (years)			
0-9	31	11	35.5
10-19	51	24	47.1
20-29	161	71	44.1
30-39	206	79	38.3
40-49	167	52	31.1
50-59	175	51	29.1
60-69	116	24	20.7
70-79	86	30	34.9
80+	31	10	32.3
Median age in years (IQR*)	44 (30-58)	38 (27-55)	

*IQR: Interquartile Range



Table A3: Characteristics of all deaths (n = 26).

Characteristics	N	%
Sex		
Male	19	73.1
Female	7	26.9
Age groups (years)		
0-9	0	0.0
10-19	0	0.0
20-29	0	0.0
30-39	0	0.0
40-49	1	3.8
50-59	2	7.7
60-69	8	30.8
70-79	10	38.5
80+	5	19.2
Median age in years (IQR*)	75 (66-79)	
District		
Ammochostos	3	11.5
Larnaka	9	34.6
Limassol	2	7.7
Nicosia	4	15.4
Pafos	8	30.8

*IQR: Interquartile Range



Table A4: Number of cases by date of sampling, laboratory reporting, death, and ICU admission.

Date	Sampling (n = 1,024)	Laboratory reporting (n = 1,024)	Death (n = 26)	ICU first admission (n = 32)
01-Mar	0	0	0	0
02-Mar	0	0	0	0
03-Mar	0	0	0	0
04-Mar	0	0	0	0
05-Mar	0	0	0	0
06-Mar	0	0	0	0
07-Mar	1	0	0	0
08-Mar	0	0	0	0
09-Mar	1	2	0	0
10-Mar	4	0	0	0
11-Mar	2	0	0	0
12-Mar	6	0	0	0
13-Mar	13	16	0	0
14-Mar	8	5	0	0
15-Mar	12	8	0	0
16-Mar	5	13	0	1
17-Mar	8	4	0	1
18-Mar	16	16	0	0
19-Mar	13	9	0	0
20-Mar	16	10	0	1
21-Mar	10	0	1	1
22-Mar	6	16	0	1
23-Mar	13	19	0	1
24-Mar	18	8	2	3
25-Mar	14	10	0	3
26-Mar	34	20	0	1
27-Mar	31	24	3	2
28-Mar	26	21	1	3
29-Mar	33	27	1	1
30-Mar	37	33	0	0
31-Mar	39	45	2	0
01-Apr	29	56	2	1
02-Apr	47	29	0	0



ΥΠΟΥΡΓΕΙΟ ΥΓΕΙΑΣ

03-Apr	21	32	1	2
04-Apr	25	38	1	0
05-Apr	9	18	0	0
06-Apr	37	23	0	1
07-Apr	39	23	0	1
08-Apr	23	32	0	1
09-Apr	17	31	1	1
10-Apr	18	20	0	1
11-Apr	37	20	1	0
12-Apr	21	16	1	1
13-Apr	26	41	0	0
14-Apr	25	25	0	0
15-Apr	15	16	0	0
16-Apr	9	19	0	2
17-Apr	4	15	0	0
18-Apr	6	7	0	0
19-Apr	0	1	0	0
20-Apr	11	6	0	1
21-Apr	6	13	0	0
22-Apr	7	5	1	0
23-Apr	13	7	1	0
24-Apr	2	12	0	0
25-Apr	9	3	0	0
26-Apr	4	2	1	1
27-Apr	16	11	0	0
28-Apr	5	16	0	0
29-Apr	9	4	0	0
30-Apr	6	5	0	0
01-May	7	8	0	0
02-May	3	7	0	0
03-May	2	4	0	0
04-May	4	6	0	0
05-May	5	4	1	0
06-May	6	4	0	0
07-May	2	3	0	0
08-May	3	3	0	0
09-May	8	3	1	0
10-May	1	4	0	0



ΥΠΟΥΡΓΕΙΟ ΥΓΕΙΑΣ

11-May	0	3	0	0
12-May	3	4	1	0
13-May	2	0	1	0
14-May	3	3	0	0
15-May	2	4	0	0
16-May	4	4	0	0
17-May	0	0	0	0
18-May	1	1	0	0
19-May	5	5	0	0
20-May	3	0	0	0
21-May	8	7	0	0
22-May	1	1	0	0
23-May	2	3	0	0
24-May	0	3	0	0
25-May	2	2	0	0
26-May	0	1	0	0
27-May	3	1	0	0
28-May	0	1	0	0
29-May	2	1	0	0
30-May	3	1	0	0
31-May	1	4	0	0
01-Jun	4	2	0	0
02-Jun	6	5	0	0
03-Jun	1	5	0	0
04-Jun	0	0	0	0
05-Jun	5	1	1	0
06-Jun	5	1	0	0
07-Jun	1	8	0	0
08-Jun	2	1	0	0
09-Jun	2	2	0	0
10-Jun	2	3	0	0
11-Jun	4	1	0	0
12-Jun	0	4	0	0
13-Jun	3	0	0	0
14-Jun	2	3	0	0
15-Jun	0	2	0	0
16-Jun	0	0	0	0
17-Jun	1	0	0	0



ΥΠΟΥΡΓΕΙΟ ΥΓΕΙΑΣ

18-Jun	0	0	1	0
19-Jun	1	1	0	0
20-Jun	1	0	0	0
21-Jun	0	1	0	0
22-Jun	1	1	0	0
23-Jun	3	2	0	0
24-Jun	0	1	0	0
25-Jun	2	1	0	0
26-Jun	0	2	0	0
27-Jun	0	0	0	0
28-Jun	2	0	0	0
29-Jun	2	4	0	0
30-Jun	0	0	0	0
01-Jul	0	1	0	0
02-Jul	1	0	0	0
03-Jul	1	0	0	0
04-Jul	3	4	0	0
05-Jul	0	1	0	0
06-Jul	2	0	0	0
07-Jul	2	3	0	0
08-Jul	2	3	0	0
09-Jul	3	2	0	0
10-Jul	8	1	0	0
11-Jul	0	8	0	0
12-Jul	1	0	0	0
13-Jul	1	1	0	0
14-Jul	1	2	0	0



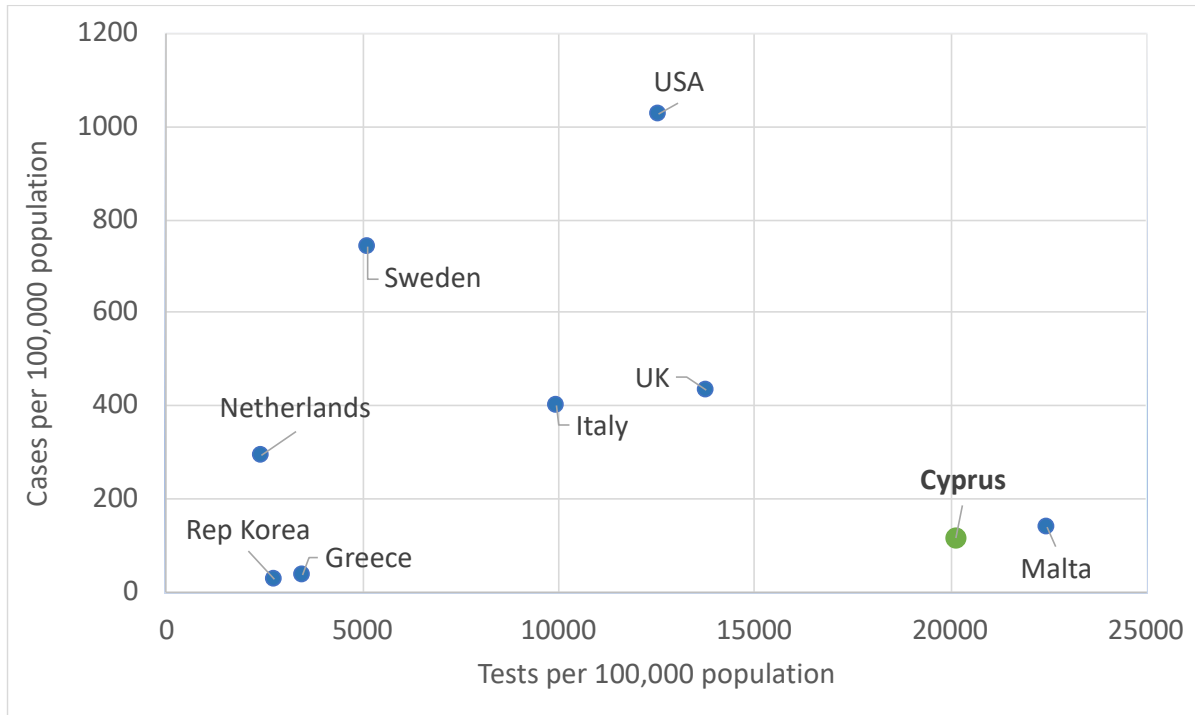
Figure A1: Distribution of cases by postal code (n = 978 with information available).



Each colour represents a different postal code and the size changes according to the number of cases.



Figure A2: Cumulative tests and cases per 100,000 population in Cyprus and other selected countries (Updated: 14/07/2020).



Data source for Cyprus: internal communication; data source for other countries:

<https://www.finddx.org/covid-19/test-tracker/>

Numbers of cases and tests for Cyprus are aggregated and include people from abroad and the British bases, while the total population does not include inhabitants from abroad or from the British bases.



Figure A3: Time from date of sampling to death of COVID-19 cases who died (n = 26; for three cases who died on the day of sampling/reporting, the time alive has been considered 0.5 days).

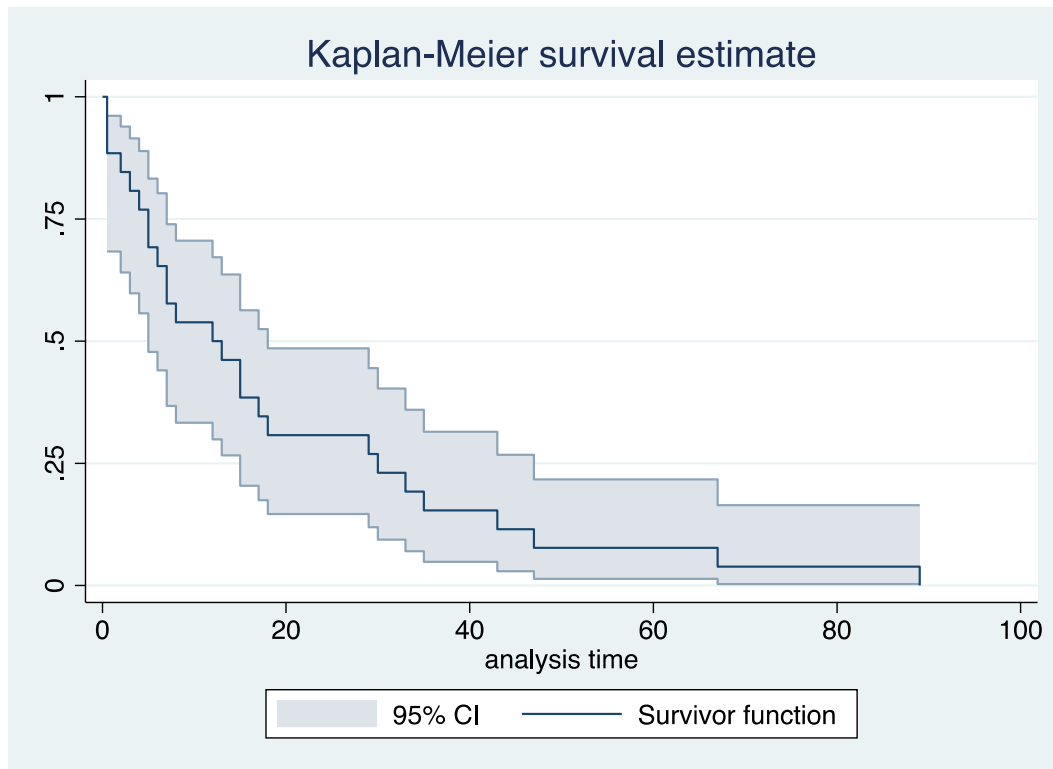




Figure A4: Length of stay in ICU (n = 32; for two cases who died on the same day of ICU admission the length of stay in ICU has been considered 0.5 days).

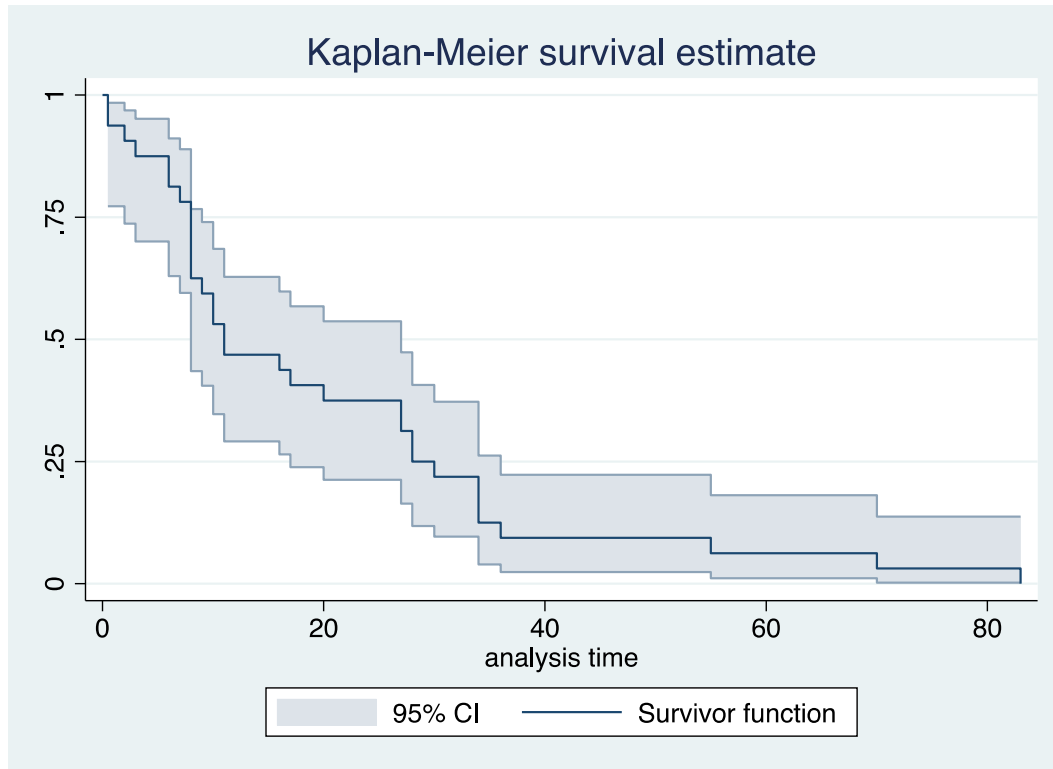




Figure A5: Length of stay in ICU of patients who died and had been admitted to an ICU (n = 18; for two cases who died the same day of ICU admission the length of stay in ICU has been considered 0.5 days).

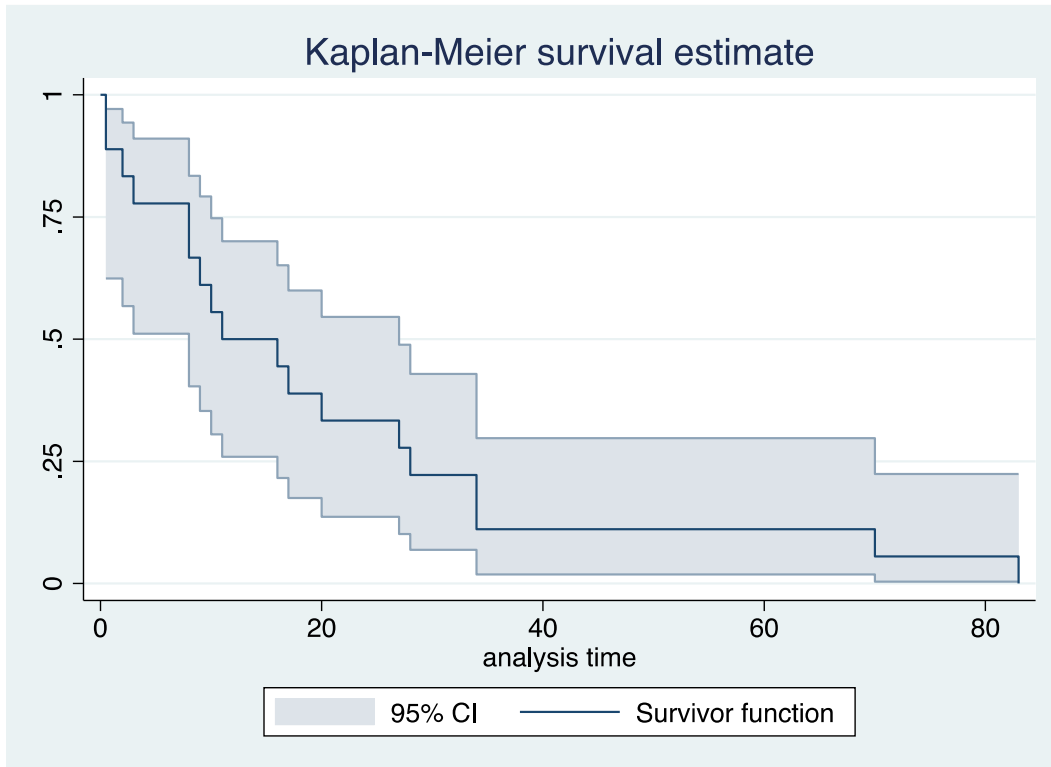


Table B1: Sex and age distribution of cases by origin of infection, last 14 days (1-14/07/2020)

Characteristics	Total (n = 26)		Imported (n = 16)		Locally-acquired (n = 10)	
	N	%	N	%	N	%
Sex						
Male	22	84.6	15	93.8	7	70.0
Female	4	15.4	1	6.3	3	30.0
Age groups (years)						
0-9	0	0.0	0	0.0	0	0.0
10-19	2	7.7	2	12.5	0	0.0
20-29	10	38.5	8	50.0	2	20.0
30-39	10	38.5	5	31.3	5	50.0
40-49	2	7.7	1	6.3	1	10.0
50-59	1	3.8	0	0.0	1	10.0
60-69	1	3.8	0	0.0	1	10.0
70-79	0	0.0	0	0.0	0	0.0
80+	0	0.0	0	0.0	0	0.0
Median age in years (IQR)	31 (24-37)		28 (24-32.5)		36.5 (32-45)	
Symptoms at diagnosis						
Yes	10	38.5	4	25.0	6	60.0
No	13	50.0	9	56.3	4	40.0
Unknown	3	11.5	3	18.8	0	0.0



ΥΠΟΥΡΓΕΙΟ ΥΓΕΙΑΣ

Table B2. Characteristics of patients ever admitted to ICU, by patient status at ICU discharge

Characteristics	Total cases	Discharged alive		Deceased in ICU	
	N	N	%	N	%
Total	32	14	43.8	18	56.3
Sex					
Male	23	10	43.5	13	56.5
Female	9	4	44.4	5	55.6
Age groups (years)					
0-9	0	0	0.0	0	0.0
10-19	0	0	0.0	0	0.0
20-29	1	1	100.0	0	0.0
30-39	2	2	100.0	0	0.0
40-49	2	1	50.0	1	50.0
50-59	7	5	71.4	2	28.6
60-69	10	3	30.0	7	70.0
70-79	9	2	22.2	7	77.8
80+	1	0	0.0	1	100.0
Median age (IQR)	65.5 (56-75)	57 (47-69)		69 (65-76)	
Symptoms at diagnosis (yes)	29	13	44.8	16	55.2
Cough	16	7	43.8	9	56.3
Fever	16	8	50.0	8	50.0
Myalgia	4	2	50.0	2	50.0
Sore throat	4	2	50.0	2	50.0
Anosmia	0	0	0.0	0	0.0
Shortness of breath	10	3	30.0	7	70.0
Comorbidities (yes)	23	8	34.8	15	65.2
Diabetes	9	2	22.2	7	77.8
Hypertension	11	5	45.5	6	54.5
Heart diseases	9	1	11.1	8	88.9
Chronic kidney disease	3	0	0.0	3	100.0
Chronic respiratory disease	4	0	0.0	4	100.0
Chronic liver disease	1	0	0.0	1	100.0
Cancer	2	1	50.0	1	50.0
Immunosuppression	1	1	100.0	0	0.0



Figure B1. Number of cases by origin of infection, last 14 days (1-14/07/2020)

