

Coronavirus Disease 2019 (COVID-19) in Cyprus

Surveillance Report as of 19/05/2020

Nicosia 21/05/2020

Data in brief

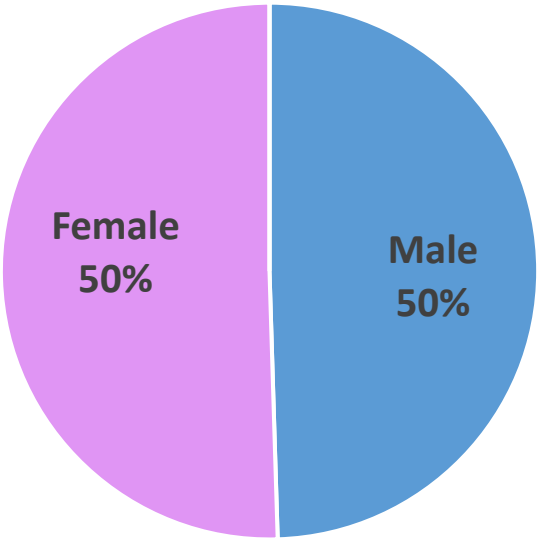
Laboratory-confirmed cases	Locally-acquired (%)	Recovered (%)	Deaths (%)
918	643/773 (83.2%)	561 (61.1%)	24 (2.6%)

Hospital care / discharge alive (%)	Currently in Intensive Care Unit*
174 (19%) / 139 (79.9%)	4

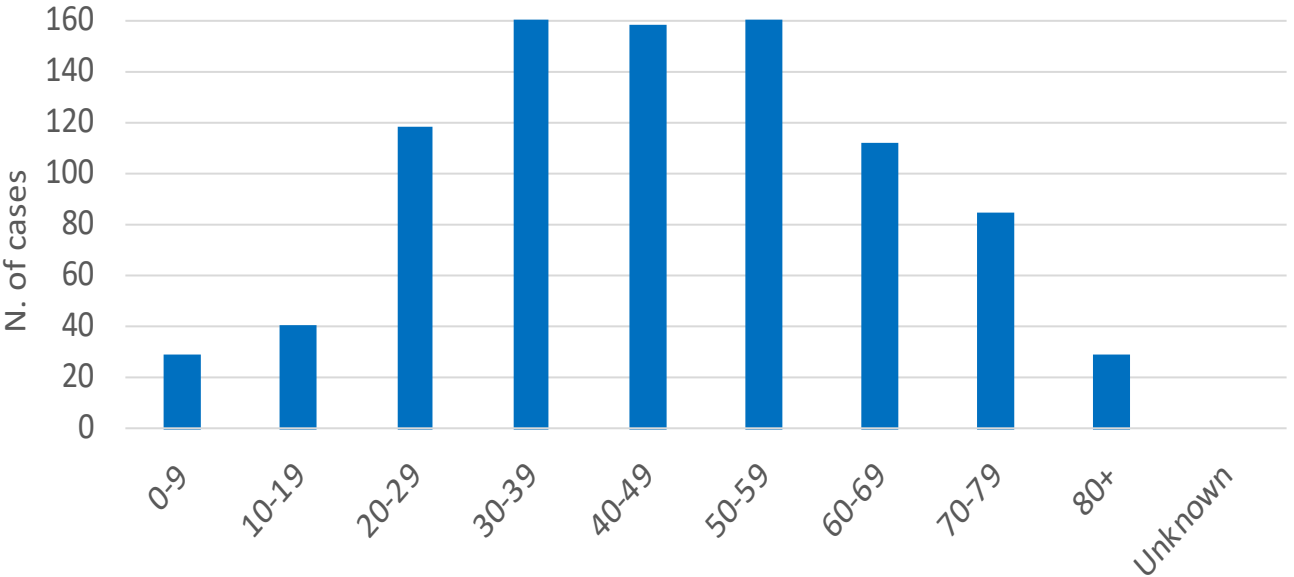
**Date of discharge/transfer/death included*

Distribution of cases by sex and age groups

Sex

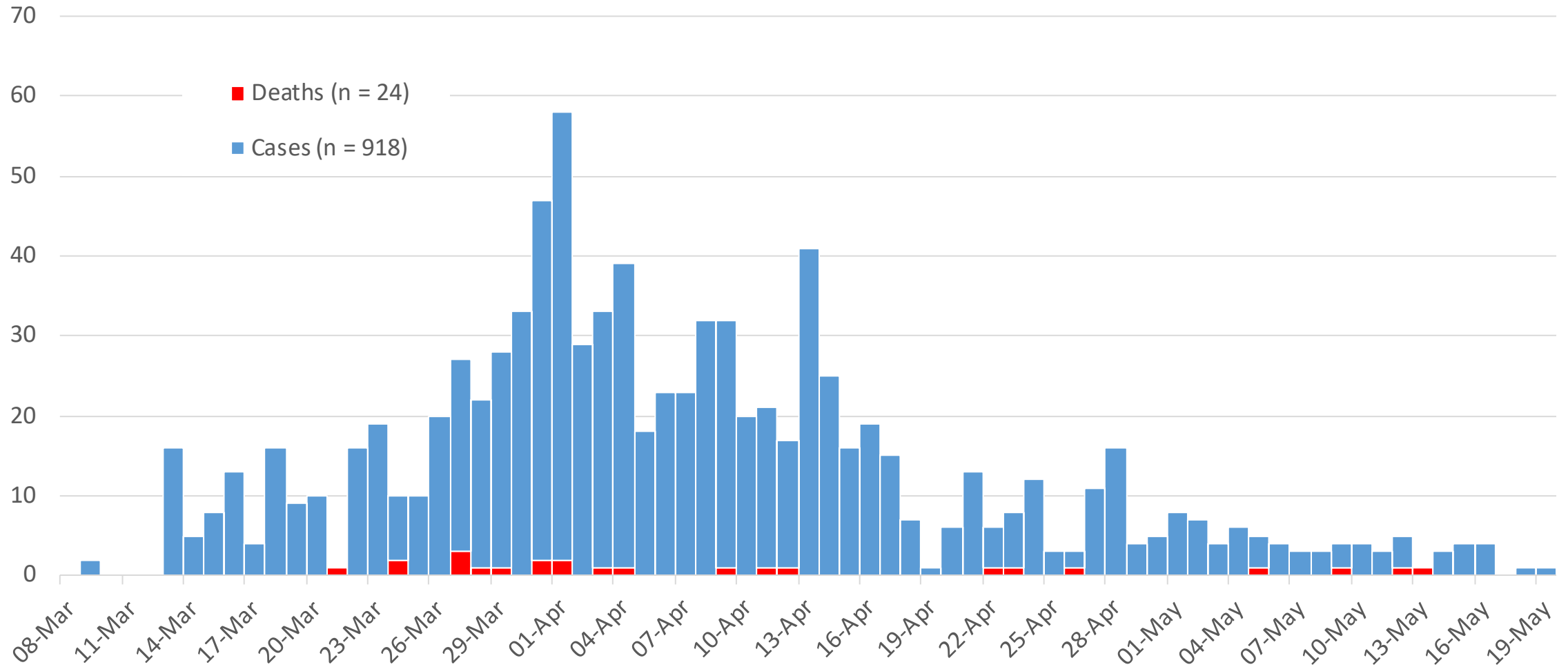


Age groups

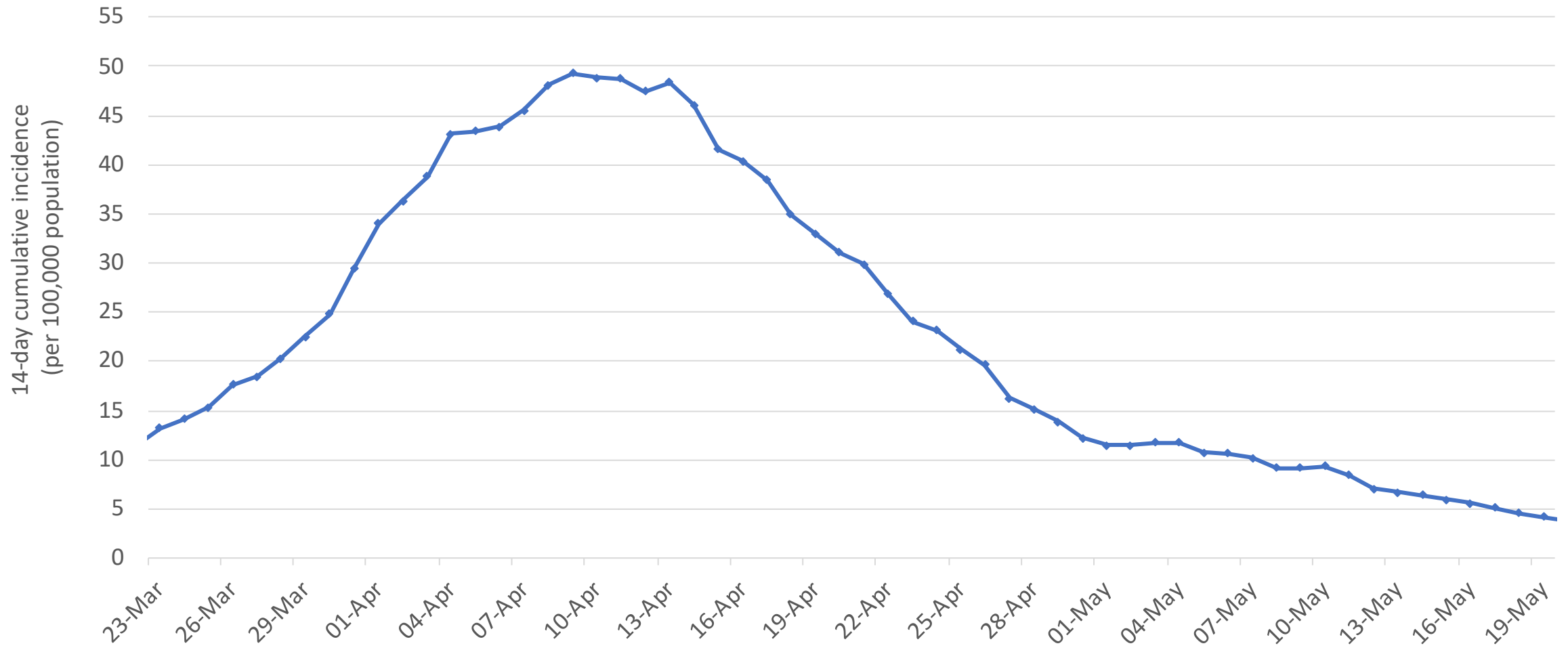


Median age: 45 years (interquartile range: 32-59 years)

Laboratory-confirmed cases and deaths by date of reporting

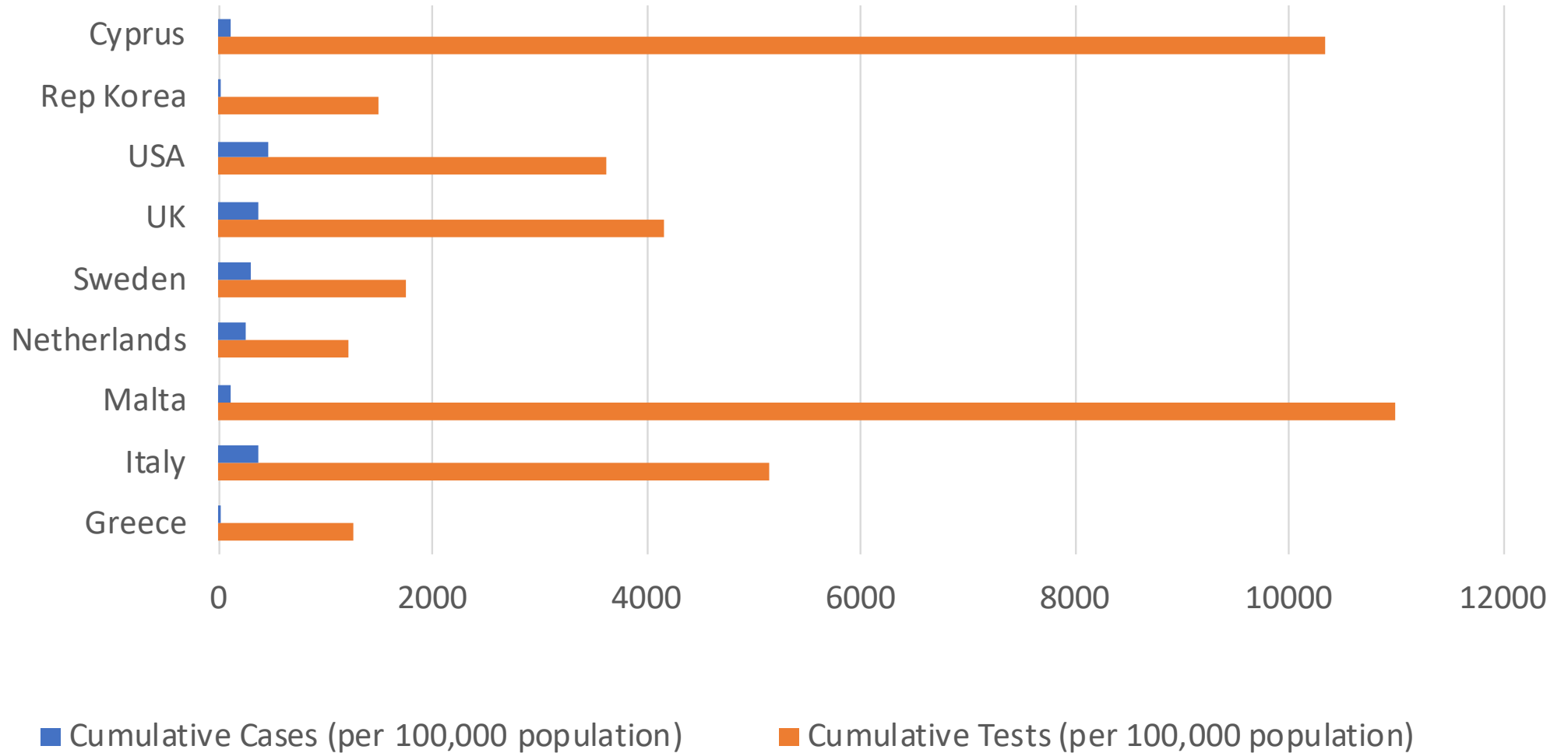


COVID-19 14-day cumulative incidence rate per 100,000 population (proxy of COVID-19 prevalence)

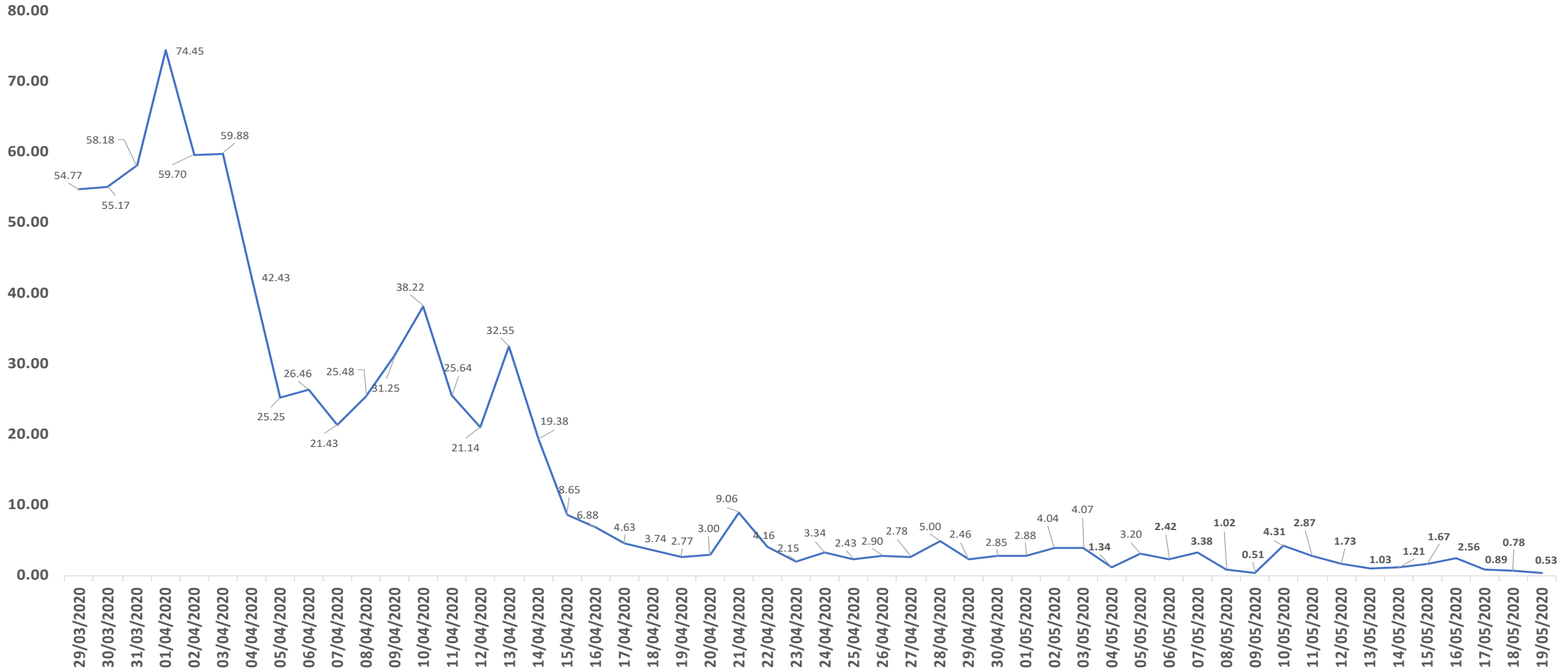


March 23rd: 14 days since the first reported case

Comparison with other countries - cases and tests (as of 19/05/2020)



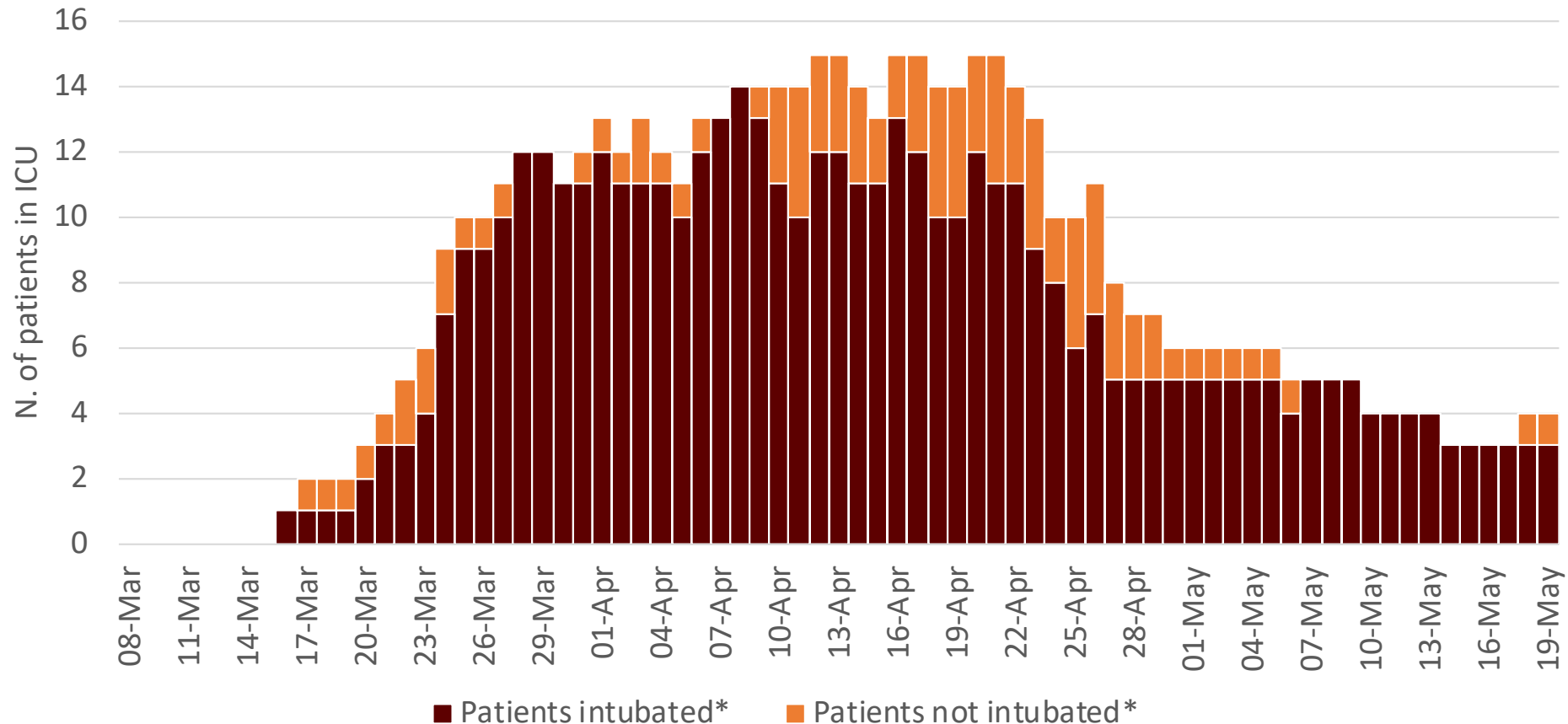
COVID-19 cases per 1000 diagnostic tests*



*Data from daily press releases "Announcements of the Ministry of Health regarding new cases of COVID-19 disease"

Cases in intensive care units (ICU)*

- 32 (3.5% of all cases) have ever been admitted to ICU

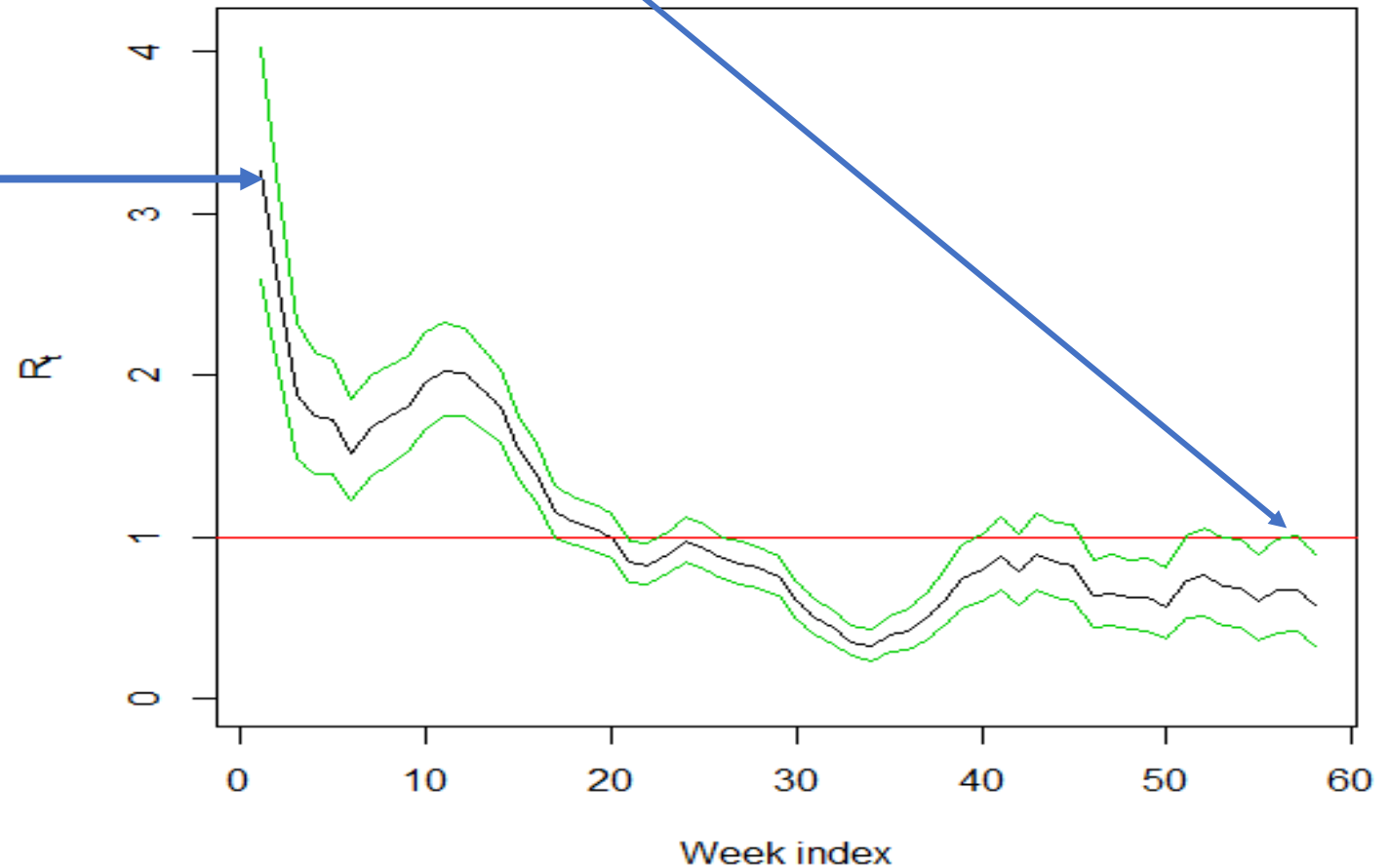


*Intensive care unit (ICU) refers only to the ICU in Limassol General Hospital and ICU in Nicosia General Hospital
Date of discharge/transfer/death included

Effective reproductive number (R_t) – Method 1

$R(t)$ 10 May - 16 May : 0.58 (0.33 – 0.90)

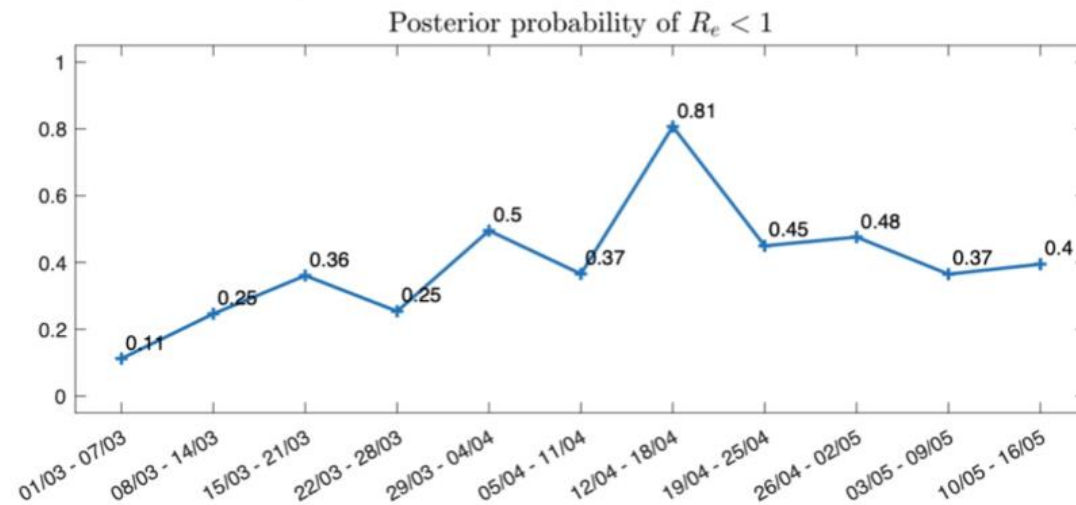
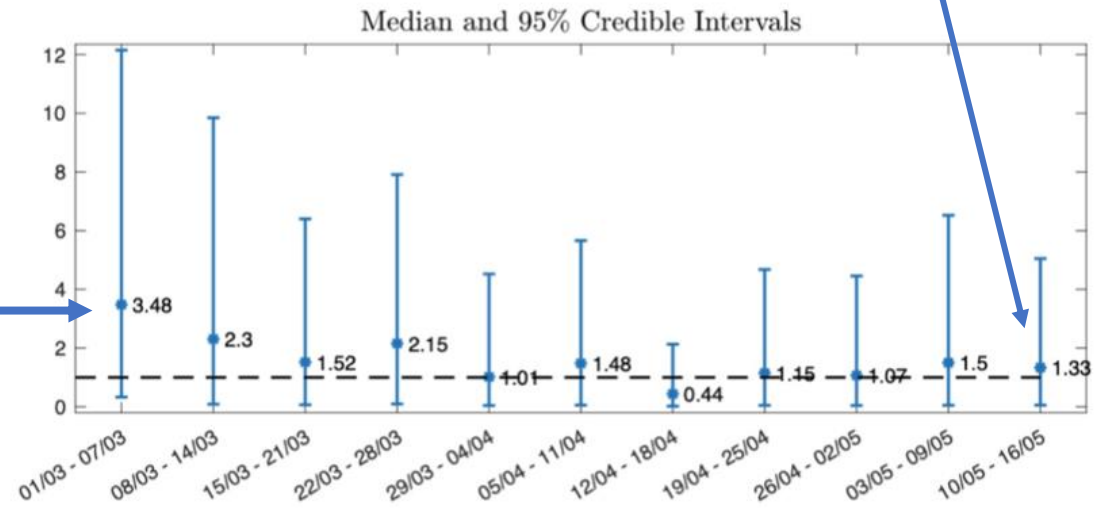
R_0 :
3.26 (2.58 – 4.01)



Effective reproductive number (R_t) – Method 2

$R(t)$ 10 May - 16 May: 1.33

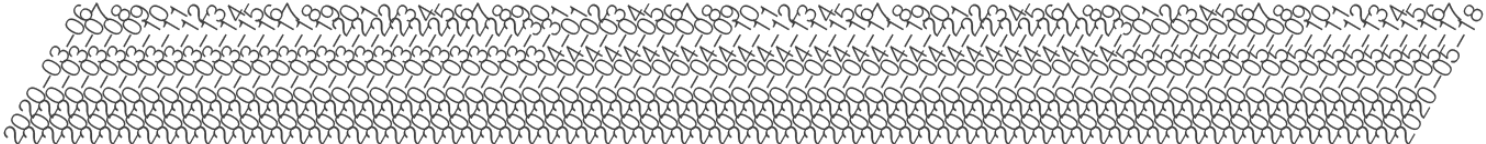
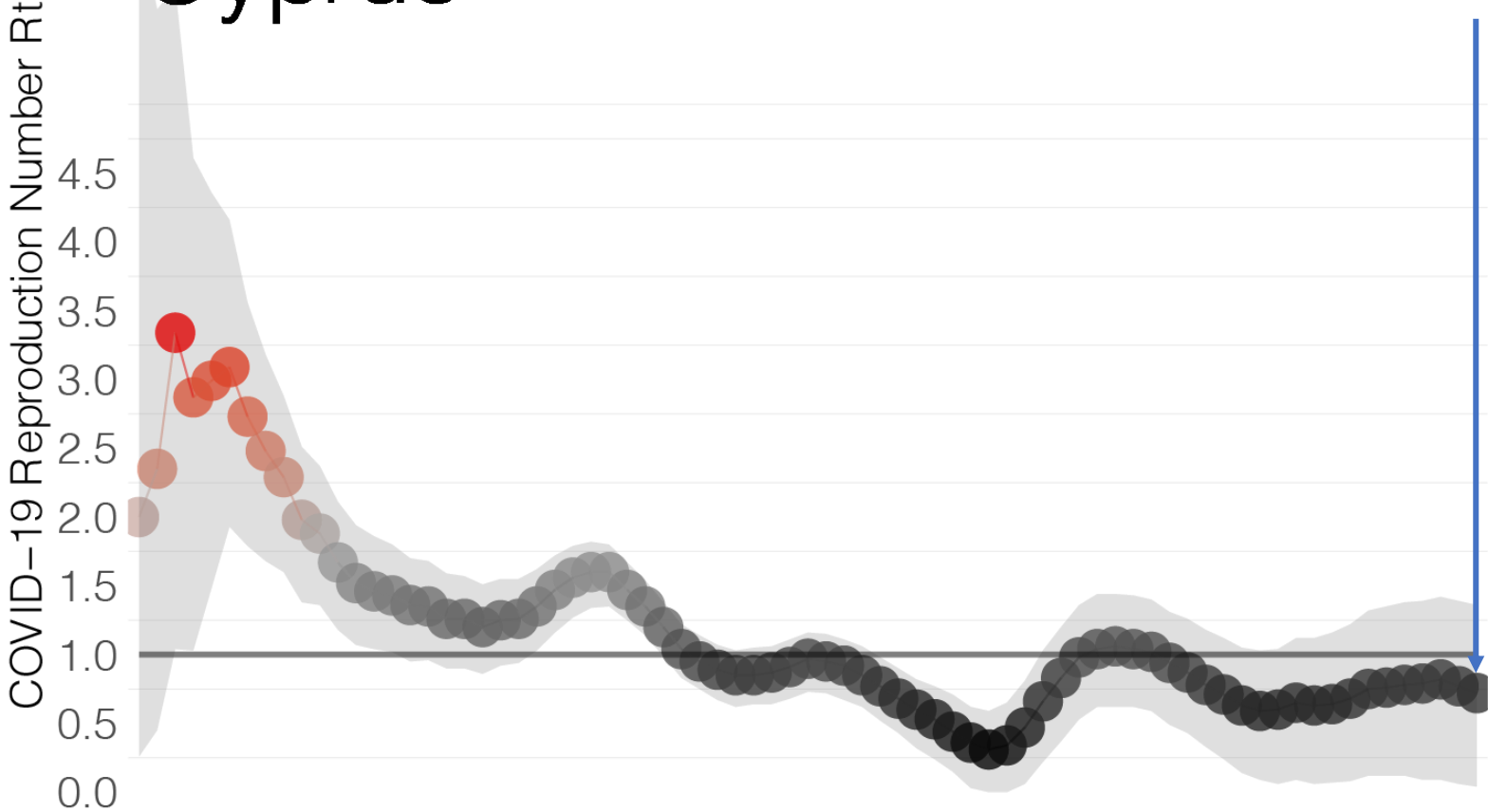
R_0 : 3.48



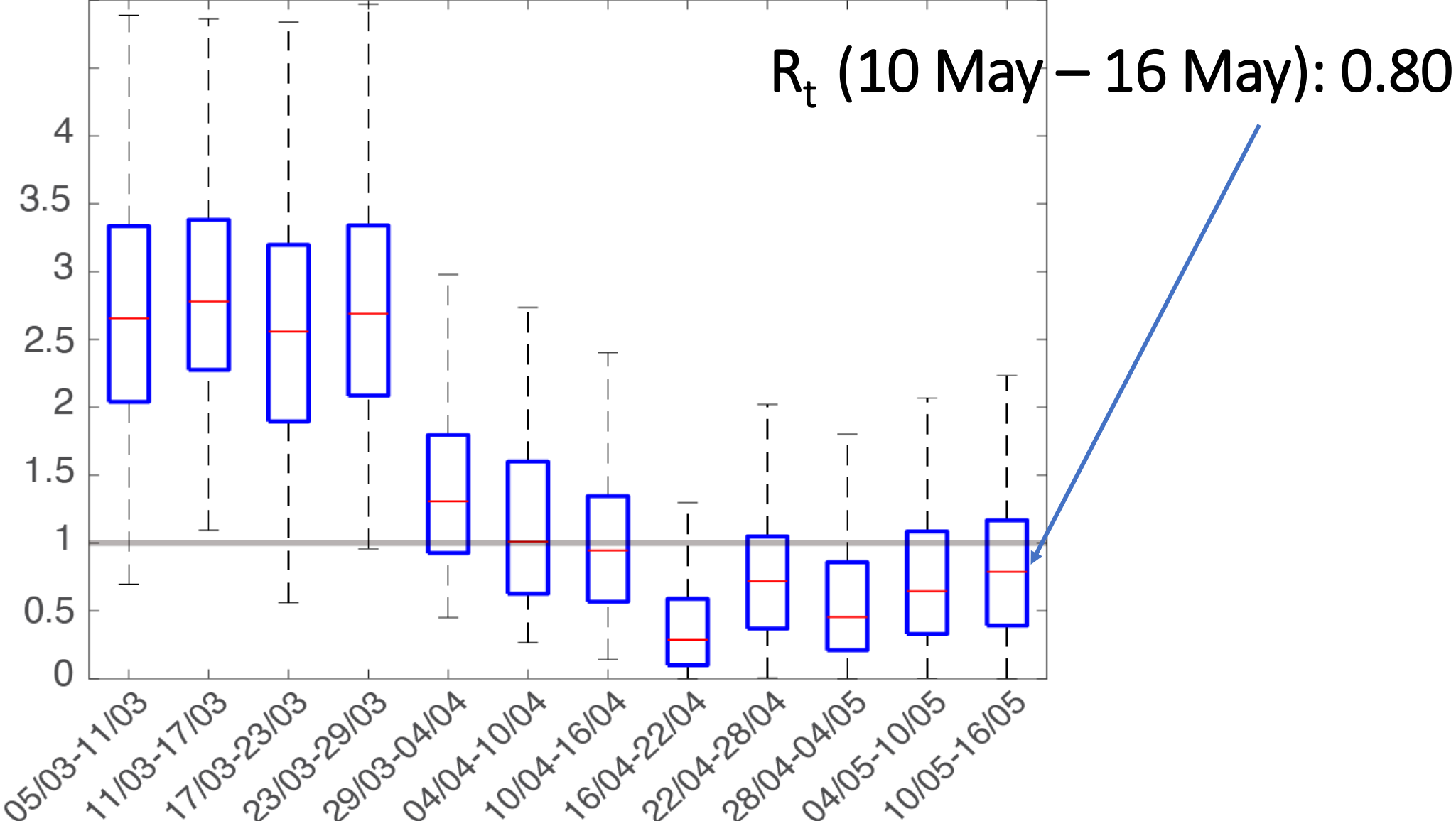
Effective reproductive number (Rt) – Method 3

R(t) 16 May : 0.72 (0.02 – 1.36)

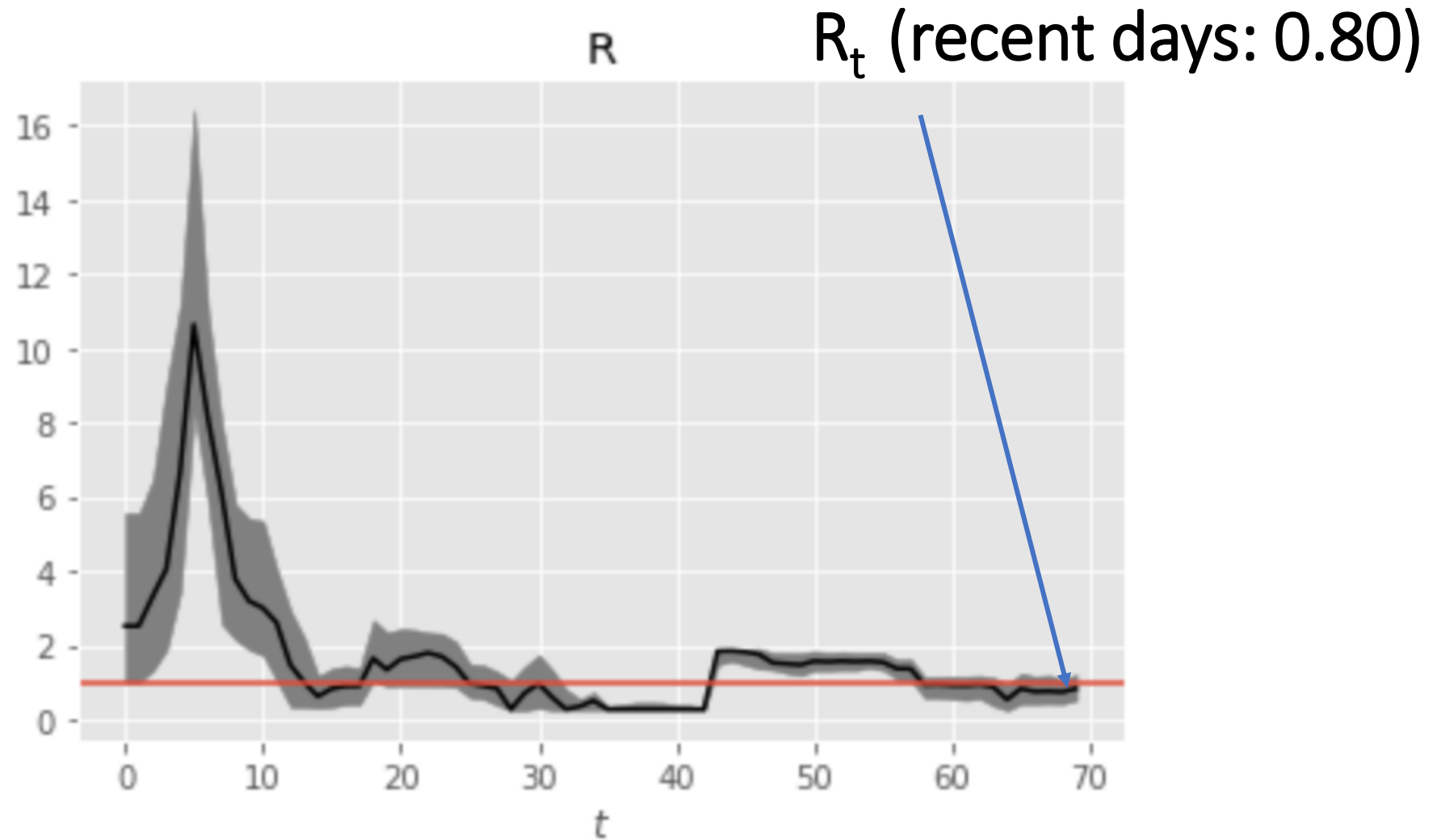
Cyprus



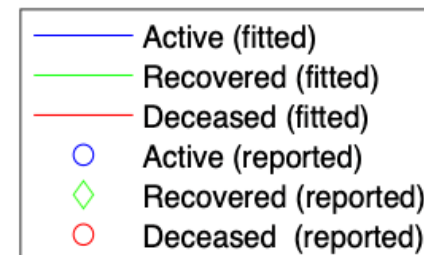
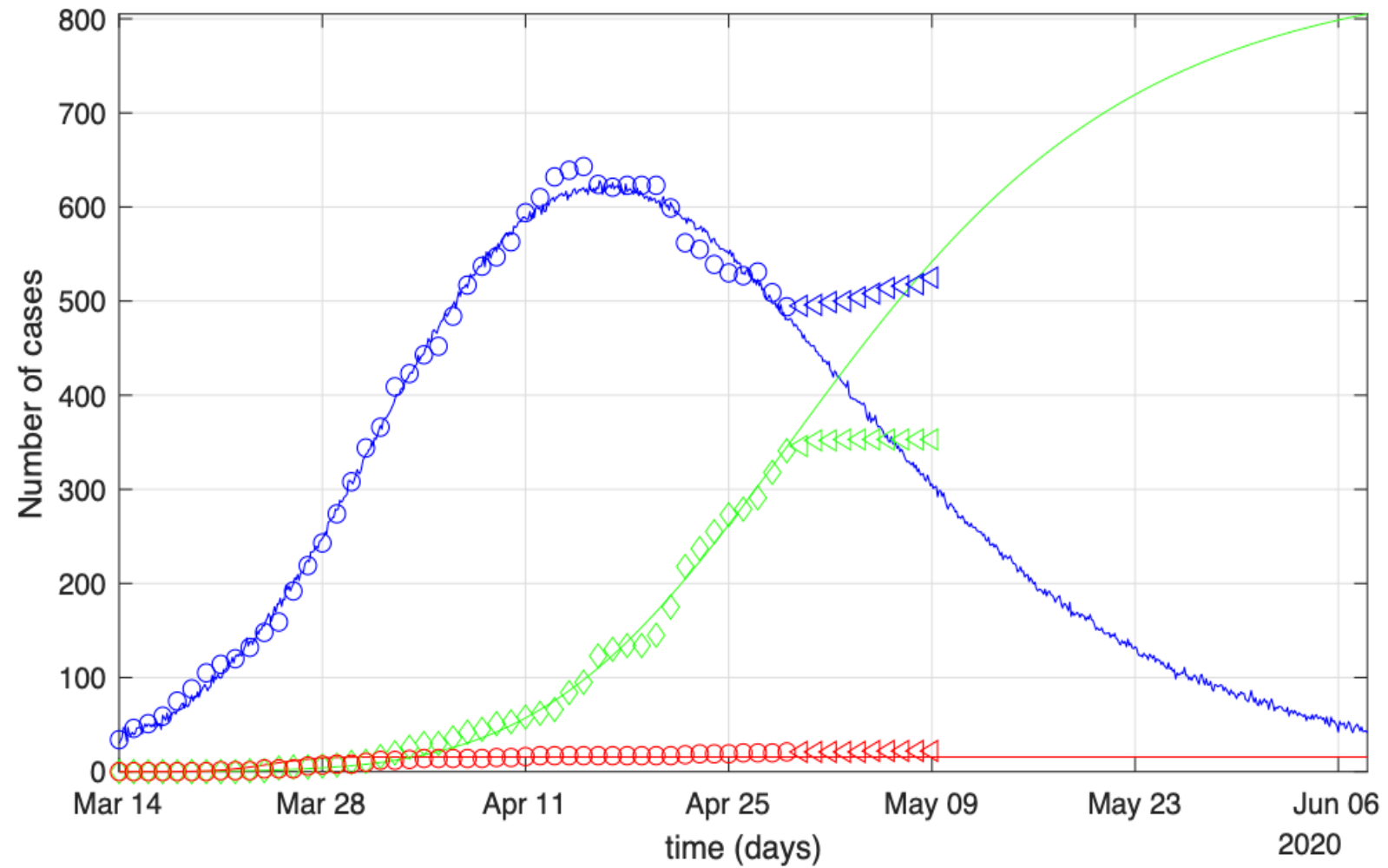
Effective reproductive number (R_t) – Method 4



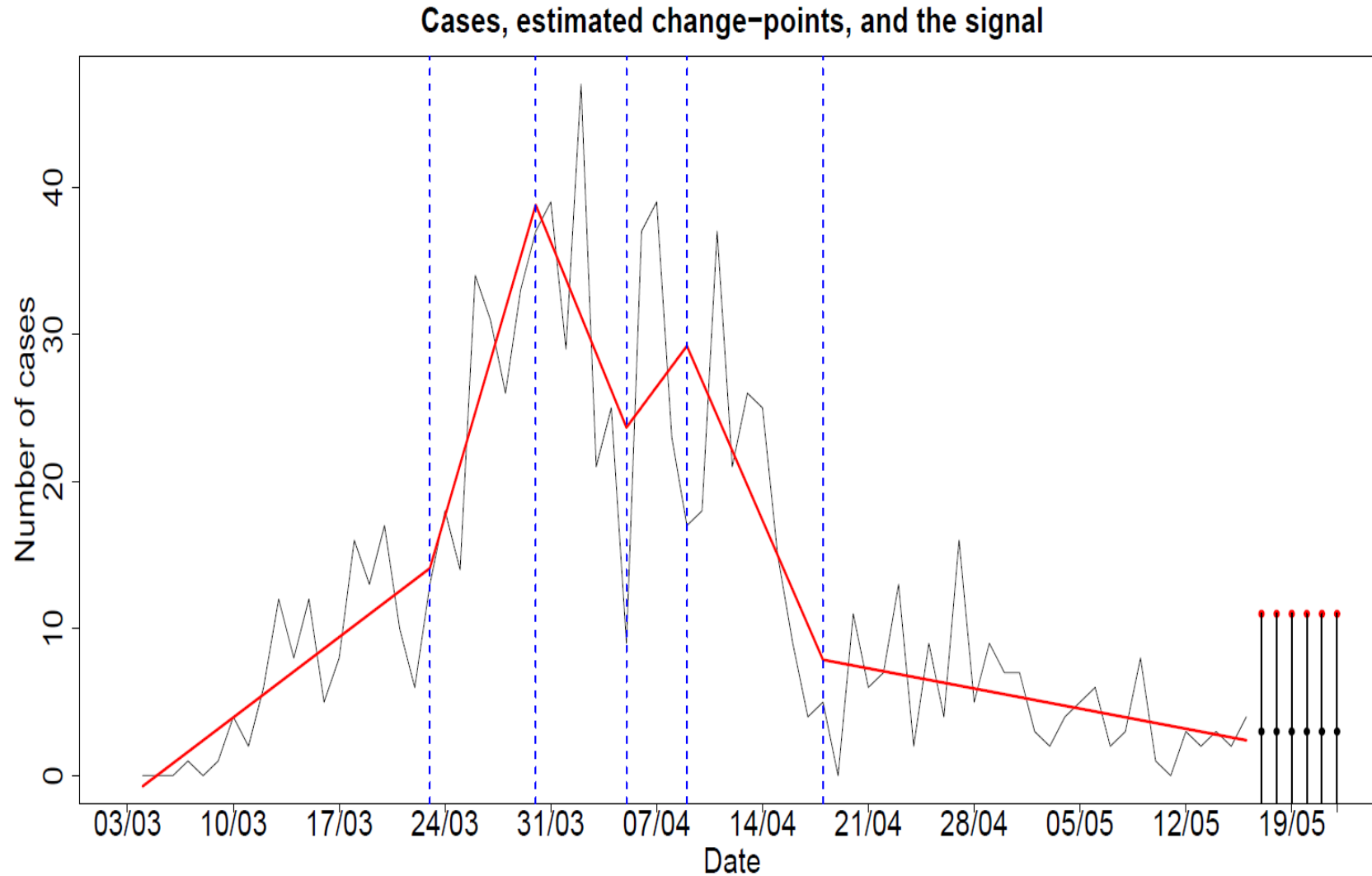
Effective reproductive number (R_t) – Method 5



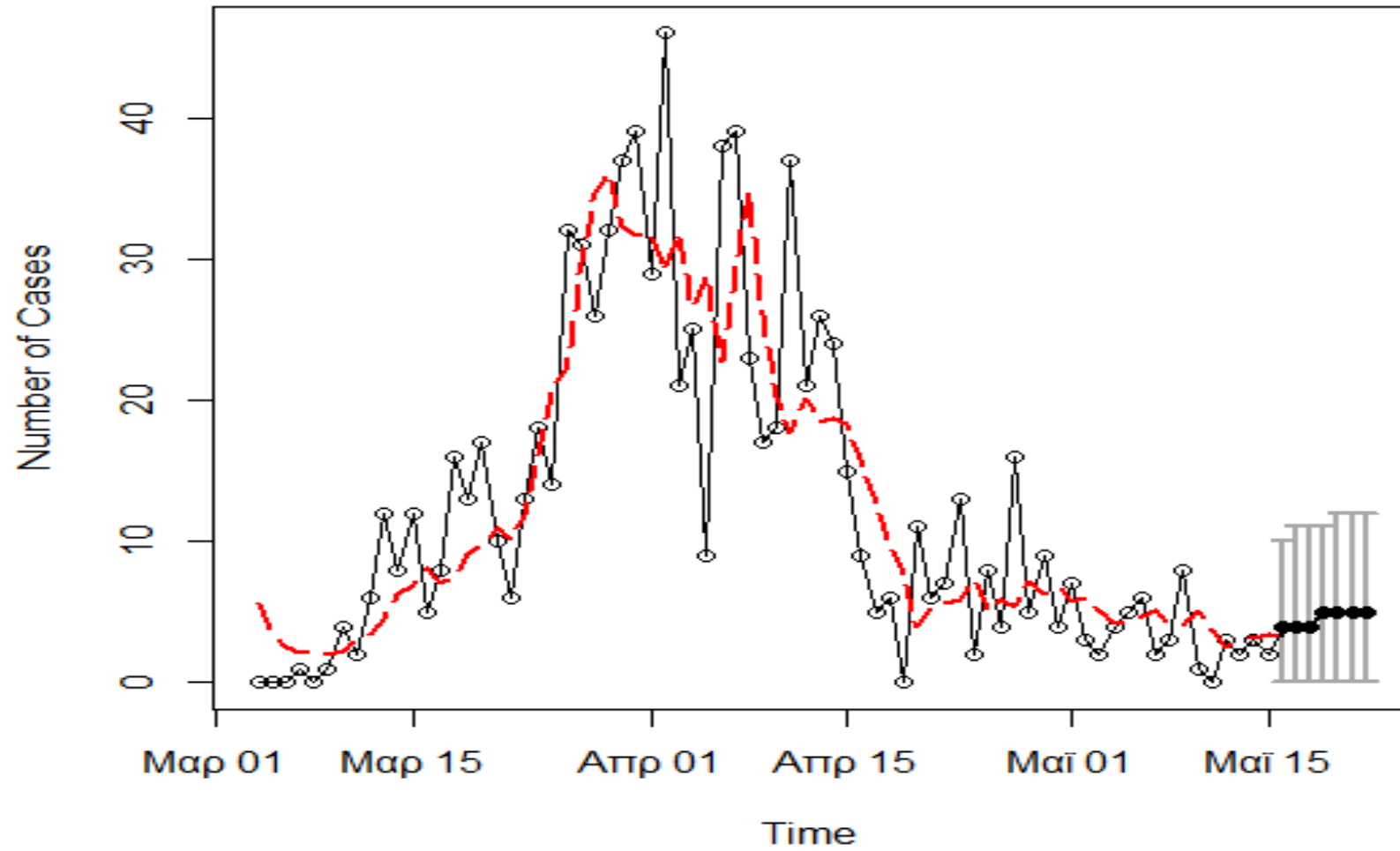
Modelling



Change-point analysis and predictions



Predictions



Mathematical Modeling of COVID-19 Pandemic

Research Team

C. Nicolaides, S. Agapiou, A. Anastasiou, A. Baxevani, T. Christofides, K. Fokianos, G. Hadjigeorgiou, G. Nikolopoulos, E. Constantinou

Laboratory tests for SARS-CoV-2

Research Team

- Epidemiological Surveillance Unit, Ministry of Health
- Contributors : Christiana Dimitriou, Christos Charalambous, Ourania Kolokotroni, Alexandros Heraclidis, Ioanna Gregoriou, Georgios Nikolopoulos and Elisavet Constantinou

Epidemiological Surveillance Unit of the Ministry of Health, Cyprus

- Contributors: Annalisa Quattrocchi, Ioannis Mamais, Valentinos Silvestros, Anna Demetriou (Health Monitoring Unit), Maria Athanasiadou (Health Monitoring Unit), Theopisti Prianou (Health Monitoring Unit), Androulla Stylianou, Sotiroula Sotiriou, Fani Theofhanous, Christos Charalambous, Ioanna Gregoriou, Maria Koliou, Georgios Nikolopoulos and Elisavet Constantinou
- Scientific Committee: Elisavet Constantinou, Constantinos Constantinou, Niki Paphitou, Georgios Nikolopoulos, Maria Koliou, George Panos, Eirini Christaki, Zoi - Dorothea Pana, Constantinos Tsioutis, Leontios Kostrikis, Peter Karayiannis, George Petrikkos, Petros Agathangelou, George Mixides