



Coronavirus Disease 2019 (COVID-19)

National Surveillance Report as of 22/09/2020

Date of publication: 25/09/2020

Produced by the Epidemiological Surveillance Unit of the Ministry of Health

Contributors: Annalisa Quattrocchi, Ioannis Mamais, Valentinos Silvestros, Anna Demetriou (Health Monitoring Unit), Maria Athanasiadou (Health Monitoring Unit), Theopisti Kyprianou (Health Monitoring Unit), Androulla Stylianos, Sotiroula Sotiriou, Fani Theofhanous, Christos Charalambous, Ioanna Gregoriou, Maria Koliou, Georgios Nikolopoulos and Elisavet Constantinou

Scientific Committee: Elisavet Constantinou, Constantinos Constantinou, Niki Paphitou, Georgios Nikolopoulos, Maria Koliou, George Panos, Eirini Christaki, Zoi – Dorothea Pana, Constantinos Tsioutis, Leondios Kostrikis, Peter Karayiannis, George Petrikkos, Petros Agathangelou, George Mixides

Suggested citation: Epidemiological Surveillance Unit of the Ministry of Health, Cyprus. National Situation Report. Coronavirus Disease 2019 (COVID-19), 25 September 2020.



Summary

- As of September 22nd, a total of 1,620 COVID-19 cases and 29 deaths (case fatality rate: 1.8%) have been reported in the Republic of Cyprus.
- Among these cases, 12.7% are health-care workers (n = 205) - 2.6% physicians (n = 42), 6.3% nurses (n = 102), 0.6% other health occupations (n = 10), and 3.2% auxiliary staff (n = 51).
- The median age of cases is 39 years (Interquartile range - IQR: 27-55 years); 52.3% are male and 47.7% are female.
- Overall, of 1,428 cases for which the place of exposure was known, locally acquired infections (index cases and close-contacts of confirmed cases) were 1,028 (72%) - of these 5.5% (n = 57) were related to a health-care facility (General Hospital in Pafos) and 14.5% (n = 149) were reported in Aradippou municipality.
- Since July 1st (included), of 622 cases reported, 36% (n = 224) were imported, 56% (n = 349) were locally-acquired, and 8% (n = 49) were unknown.
- In total, 13.4% (n = 217) of cases received hospital care, and 12 (5.5%) are still hospitalised (either for treatment of COVID-19 symptoms or for pre-existing conditions). The median age of all hospitalized patients is 62 years (IQR: 48-73 years) and 63.1% are males.
- There are no patients in intensive care unit or intubated.
- Among cases alive, 1,385 (87.1%) cases have recovered (without symptoms and with two negative tests following their diagnosis or released 21 days after diagnosis).
- A total of 357,416 tests have been performed as of September 22nd (40,805.6 per 100,000 population).



Epidemiological surveillance in the Republic of Cyprus

Analyses are based on laboratory-confirmed cases notified to the Epidemiological Surveillance Unit of the Ministry of Health.

As of September 22nd, 1,620 laboratory-confirmed cases of coronavirus disease 2019 (COVID-19) have been reported (Figure 1 and 2).

The median time between symptoms onset and date of sampling was 3 days (Interquartile range - IQR: 1-6 days). It should be noted that for 32 cases the date of sample collection was before the onset of symptoms because of immediate testing of contacts of possible and laboratory-confirmed cases.

As of September 22nd, the 14-day cumulative incidence rate of COVID-19 (per 100,000 population), a measure which reflects the number of active COVID-19 cases in the population (prevalence)¹, is 12.3 per 100,000 population (Figure 3).

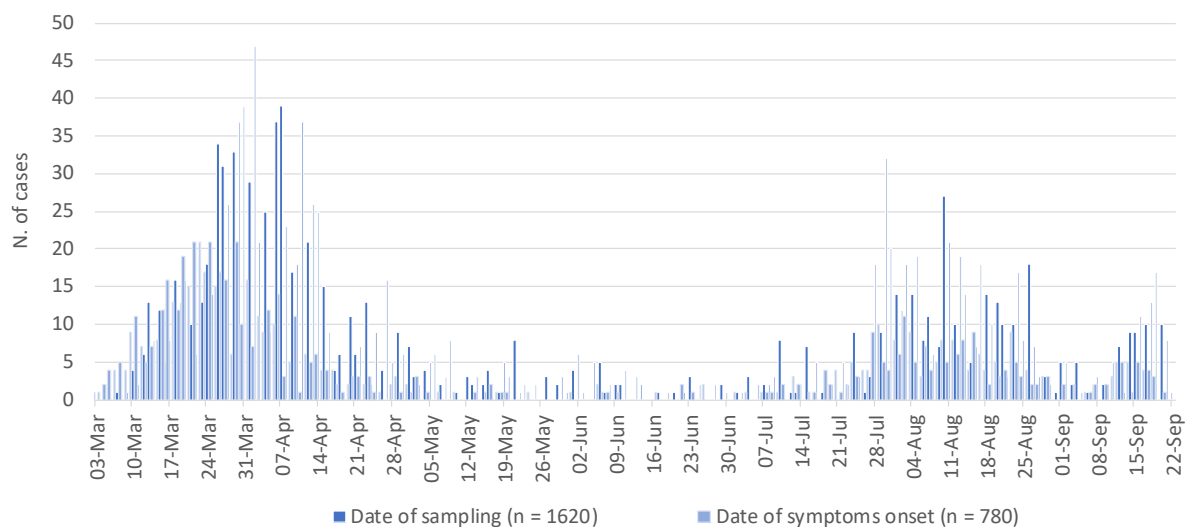


Figure 1: Number of laboratory-confirmed COVID-19 cases in Cyprus since 03/03/2020 by date of sample collection and date of symptoms onset (n = 1,620 and n = 780 with data available, respectively).

Recent data should be interpreted with caution due to the possibility that cases with date of onset within the reporting period have not yet been diagnosed.

¹Coronavirus disease 2019 (COVID-19) pandemic: increased transmission in the EU/EEA and the UK – seventh update, 25 March 2020. Stockholm: ECDC; 2020.

<https://www.ecdc.europa.eu/sites/default/files/documents/RRA-seventh-update-Outbreak-of-coronavirus-disease-COVID-19.pdf>

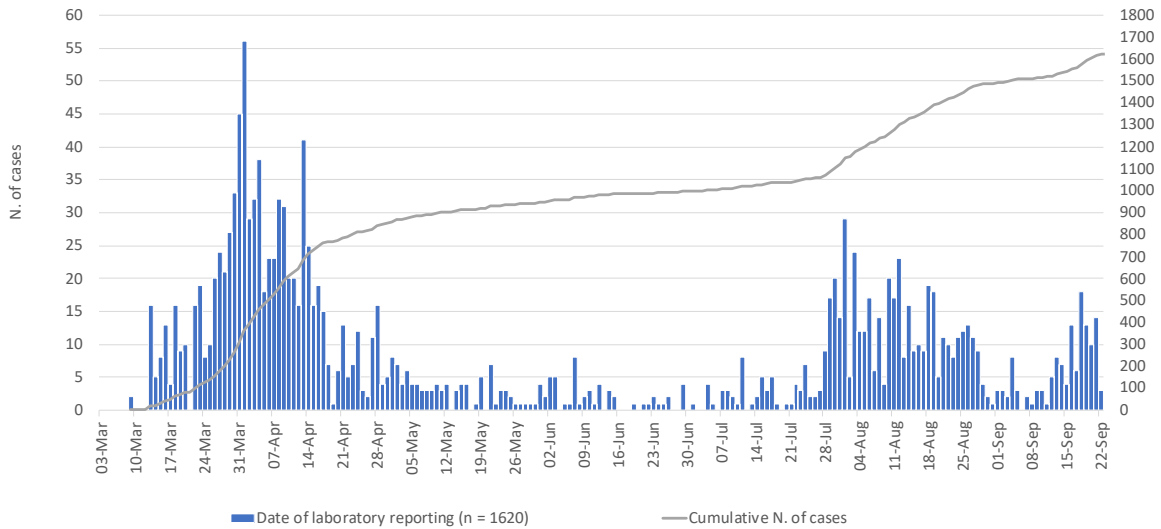


Figure 2: Number and cumulative number of laboratory-confirmed COVID-19 cases in Cyprus since 03/03/2020, by date of laboratory reporting (n = 1,620).
Recent data should be interpreted with caution due to the possibility that cases with date of onset within the reporting period have not yet been diagnosed.

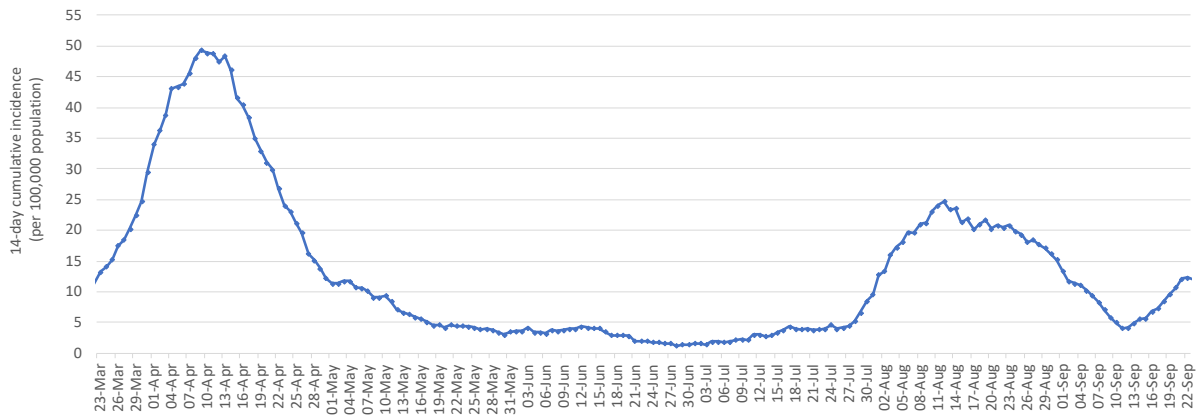


Figure 3: COVID-19 14-day cumulative incidence rate per 100,000 population (proxy of COVID-19 prevalence).
March 23rd represents the first 14th day since cases have been reported.

Characteristics of the cases

Among these cases, 52.3% are male (n = 847) and 47.7% female (n = 773). The median age of cases is 39 years (IQR: 27-55 years). By age group, cases included 120 infants, children and adolescents aged 0-17 years-old (7.4%), 1,196 adults aged 18-59 years (73.8%), 303 persons aged 60 years and older (18.7%), and for one case information was missing (Figure 4).

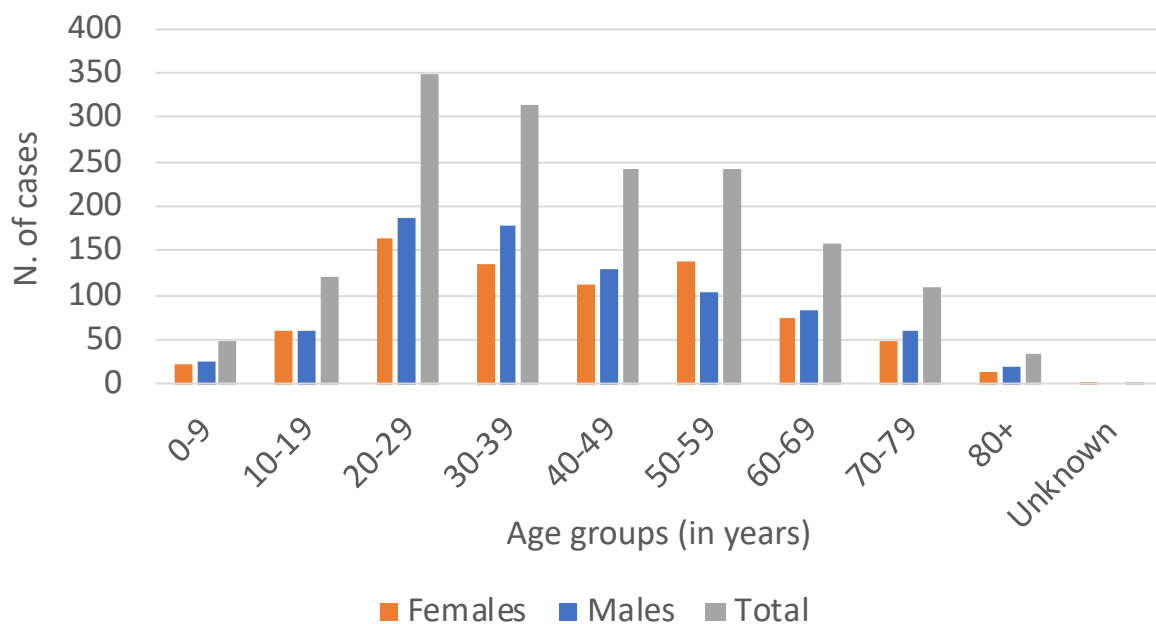


Figure 4: Laboratory-confirmed COVID-19 cases in Cyprus by sex and age groups.

Among all cases, 500 (30.9%) were reported in Nicosia district, 455 (28.1%) in Larnaka, 272 (16.8%) in Limassol, 195 (12.0%) in Pafos, 90 (5.6%) in Ammochostos, and 108 (6.7%) were reported either in the British bases or had a residence abroad, or information was not available (Table A1 in appendix).

Figure A1 in appendix shows the distribution of cases by postal code.

Notably, 204 cases (12.6%) were reported in Aradippou, a municipality in Larnaka district (Table A1 in appendix). Cases in Aradippou, including a cluster in a local bakery production line, are mainly males (52%; n = 106) and the median age is 40 years (IQR: 25.5-57 years). If the cluster is excluded, cases are mainly females (55.7%; n = 98) and the median age is 44.5 years (IQR: 24.5-59 years).



Among the 1,620 cases, 12.7% are health-care workers² (n = 205) - 2.6% physicians (n = 42), 6.3% nurses (n = 102), 0.6% other health occupations (n = 10), and 3.2% auxiliary staff (n = 51). Table 1 shows the distribution of health-care workers by district of residence.

Table 1: Health-care workers by district of residence (n=205).

District	Health-care worker	Physicians	Nurses	Other health occupations	Auxiliary staff
Ammochostos	17	3	8	0	6
Larnaka	46	8	25	2	11
Limassol	22	3	11	2	6
Nicosia	60	13	26	4	17
Pafos	60	15	32	2	11
Total	205	42	102	10	51

Epidemiological link

As of September 22nd, place of exposure is available for 1,428 cases (88.2%). In total, 28% (n = 400) of laboratory-confirmed COVID-19-cases had history of travel or residence abroad during the 14 days prior to symptom onset (imported). Locally-acquired infections (index cases and close-contacts of confirmed cases) occurred in 72% (n = 1,028 of 1,428 with known place of exposure) of the cases, of which 5.5% (n = 57) were related to a health-care facility (General Hospital in Pafos). Of all cases in Aradippou (Larnaka district) (n = 204), 149 (73%) were locally-acquired, 16 (7.8%) imported, and for 39 cases (19.1%) the epidemiological link was not recorded. Table A1 in the appendix shows the number and the rate (per 100,000 population) of locally-acquired cases by district of residence.

Since July 1st (included), of 622 cases reported, 36% (n = 224) were imported, 56% (n = 349) were locally-acquired and 8% (n = 49) are unknown. Table B1 and Figure B1 in Appendix show the characteristics of cases by origin of infection and the number of cases by origin of infection in the recent period, respectively. Figure B2 shows the distribution of cases by origin of infection for each district. The majority of recent cases were reported in Larnaka (33.2%; n = 207), where 63.4% of them (n = 99) were locally-acquired.

² The term “health-care worker” is based on the occupation and not on the place of exposure. Health-care workers are defined as all health care professionals, allied health workers, and auxiliary health workers.



Clinical features

Of the 1,1620 laboratory-confirmed COVID-19-cases, clinical information is available for 98% (n = 1,588), of which 40.9% (n = 650) reported no symptoms at diagnosis and 59.1% (n = 938) reported at least one symptom. The most commonly reported symptoms were:

- cough (413/1,572; 26.3%),
- fever (423/1,570; 26.9%),
- myalgia (292/1,566; 18.7%),
- sore throat (235/1,566; 15%),
- anosmia (170/1,476; 11.5%), and
- shortness of breath (138/1,550; 8.9%).

Other reported symptoms were diarrhoea, runny nose, and headache.

Table A2 in appendix reports the sex and age distribution of asymptomatic cases at diagnosis.

Pre-existing conditions

Information on comorbidities was available for 1,484 (91.6%) cases. Of these, 488 (32.9%) reported at least one comorbidity.

The most commonly reported comorbidities were:

- hypertension (168/1,469; 11.4%),
- diabetes (92/1,476; 6.2%),
- heart disease (85/1,476; 5.8%),
- chronic respiratory disease (38/1,402; 2.7%), and
- cancer (32/1,484; 2.2%).

Other reported comorbidities were immunosuppression, chronic kidney disease, and autoimmune disease.



Deaths

As of September 22nd, 29 deaths were reported in Cyprus (Case Fatality Rate - CFR: 1.8%).

The mortality rate for COVID-19 is 3.3 per 100,000 population.

Twenty-two deaths (75.9%) occurred in men and seven (24.1%) in women; the median age of all deaths was 76 years (IQR: 68-78 years). Eleven deaths were reported among residents in Larnaka, eight in Pafos, five in Nicosia, three in Ammochostos, and two in Limassol (Appendix Table A3).

The median time from date of sampling to death was 12 days (IQR: 5-30 days). Figure A3 shows the Kaplan-Meier curve of the time from date of sampling to death.

For 22 deaths, COVID-19 was the underlying cause of death (COVID-19 CFR: 1.4%). Figure 5 reports the number of deaths by date.

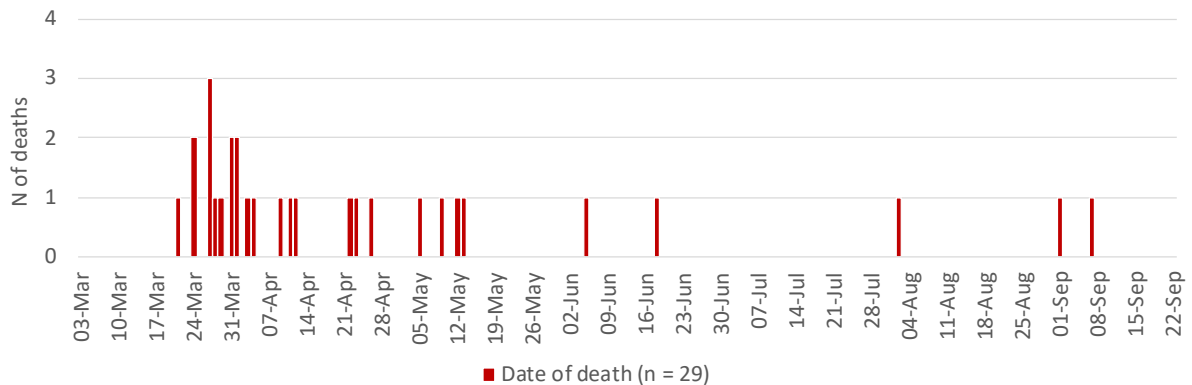


Figure 5: Number of deaths among COVID-19 cases in Cyprus by date of death (n = 29).

Hospitalization and intensive care unit (ICU) admissions³

In total, 13.4% (n = 217) of people with COVID-19 received hospital care, and twelve (5.5%) were still hospitalised, as of September 22nd (either for treatment of COVID-19 symptoms or for pre-existing conditions). The median age of hospitalized patients was 62 years (IQR: 48-73 years). Hospitalized cases were mainly males (n = 137; 63.1%). Among symptomatic cases, 19.6% (n = 184) required hospitalization. For cases hospitalised after symptoms onset (n = 130), the median time from symptom onset to hospital admission was 6.5 days (IQR: 4.5-9.5 days).

Figure 6 shows the total number of first hospital admissions by date.

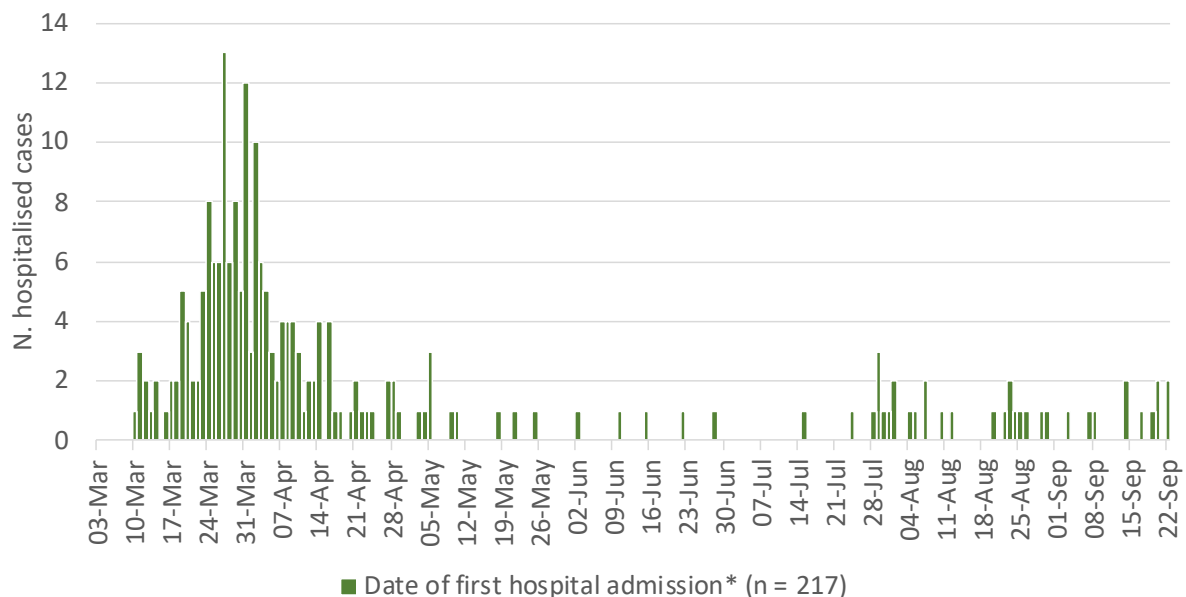


Figure 6: Number of laboratory-confirmed COVID-19 cases by date of first hospital admission (n = 217).

**Date of hospital admission was replaced with date of sampling for inpatients hospitalised prior to the beginning of the epidemic.*

Table A4 reports the number of individuals in hospital every day (excluding those in ICU). Overall, 34 cases (15.7% of all hospitalized patients) have been admitted to ICU⁴, and currently there are no cases in ICU (as of September 22nd).

³ Data on hospitalisation and ICU are provisional and should be interpreted with caution because delay in data reporting is likely; for the construction of the curve, people are no longer in an ICU/hospital the day next to the date of their discharge, death or transfer.

⁴ Intensive care unit (ICU) refers only to the ICU in Limassol General Hospital and to the ICU in Nicosia General Hospital.



A total of 29 ICU patients (85.3% of all ICU patients) have been intubated - currently there are no patients intubated.

The overall median length of stay in ICU (for all 34 ICU cases) was 13.5 days (IQR: 8-28 days). Figure A4 shows the Kaplan-Meier curve of the length of stay in ICU.

For patients who died while in ICU (n = 19), the median length of stay in ICU was 16 days (IQR: 8-28). Figure A5 shows the Kaplan-Meier curve of the length of stay in ICU for the people who died.

For patients transferred/discharged alive from ICU (n = 15), the median length of stay in ICU was 11 days (IQR: 8-28 days).

The median time from last ICU discharge to hospital discharge for those ever admitted to ICU and discharged alive from hospital (n = 14) was 8 days (IQR: 4-13 days).

For cases admitted in ICU after symptoms onset (n = 23), the median time from symptom onset to ICU admission was 9 days (IQR: 7-15 days).

The median time from symptom onset to hospital admission for patients who were then admitted to ICU (n = 20) was 5.5 days (IQR: 3.5-10 days).

The median age of patients ever admitted to ICU was 67 years (IQR: 56-76 years). ICU patients are mainly male (n = 25; 73.5%).

The characteristics of patients ever admitted to ICU and discharged or who died in ICU are reported in Table B2 in Appendix.

The number of cases currently in ICU is 0 per 100,000 population.

Figure 7 shows the number of patients in ICU, by day and intubation. Table A4 in the appendix shows also the number of patients in ICU every day as well as the number of ICU admissions by date.

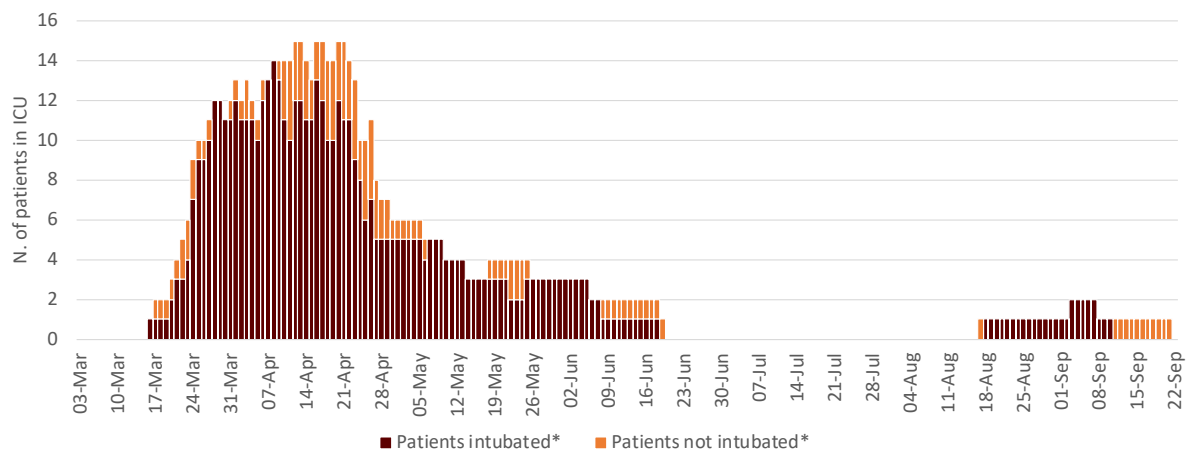


Figure 7: Number of laboratory-confirmed COVID-19 cases in ICU by date and intubation.

**Date of discharge/transfer/death included*

Recovered/released

As of September 22nd, among cases alive, 87.1% (n = 1,385) of COVID-19 cases have recovered⁵; of which 1,018 (73.5%) tested negative two consecutive times, and 367 (26.5%) have been released as per the new guidelines⁶. The median time between the second negative result and the first date of sampling was 21 days (IQR: 18-34 days).

Table 2 shows the number and percentage of recovered cases and their characteristics.

Table 2: Characteristics of all cases and cases recovered/released (n = 1,385)

Characteristics	Total cases N	Recovered			
		Two consecutive negative tests		Released after 21 days	
		N	%	N	%
Total	1,620	1018	62.8	367	22.7
Sex					
Male	847	515	60.8	198	23.4
Female	773	503	65.1	169	21.9
Age groups (years)					
0-9	49	25	51.0	13	26.5
10-19	121	64	52.9	44	36.4
20-29	350	186	53.1	107	30.6
30-39	314	207	65.9	65	20.7
40-49	241	163	67.6	50	20.7
50-59	241	181	75.1	39	16.2
60-69	159	105	66.0	28	17.6
70-79	109	67	61.5	18	16.5
80+	35	20	57.1	3	8.6
Median age in years (IQR*)	39 (27-55)	41 (29-56)		32 (24-48.5)	

⁵ For symptomatic cases, or for cases hospitalised, a COVID-19 case can be considered cured after the resolution of symptoms and two negative tests for SARS-CoV-2 at 24-hour interval at least. For asymptomatic cases, or for persons isolated at home, the negative tests to document virus clearance should be obtained at a minimum of 14 days after the initial positive test (end of the quarantine period).

Novel coronavirus (SARS-CoV-2). Discharge criteria for confirmed COVID-19 cases- When is it safe to discharge COVID-19 cases from the hospital or end home isolation? - Technical Report, 10 March 2020. Stockholm: ECDC; 2020.

⁶ A person is released 21 days after the initial diagnosis, if he/she has a positive test 14 days after the initial diagnosis and remains in isolation for one more week without being further tested.



Comparison with selected countries

As of September 22nd, in Cyprus the reporting rate was 185 cases per 100,000 population, the mortality rate was 3.3 deaths per 100,000 population, and the CFR was 1.8%.

Table 3 shows COVID-19 indicators for Cyprus and other selected countries.

Figure A2 in appendix reports the rates of cumulative tests and cases (per 100,000 population) in Cyprus and other selected countries. In Cyprus the testing rate is 40,805.6 per 100,000 population.

It should be noted that the number of cases, tests and deaths for Cyprus are aggregated and include people from abroad and the British bases, while the total population does not include inhabitants from abroad or from the British bases.



Table 3: COVID-19 indicators by selected countries, as of 22/09/2020

Country	N. of cases [†]	N. of cases (per 100,000 pop)	N. of tests [§]	N. of tests (per 100,000 pop)	N. of deaths [†]	CFR [°] (%)	Mortality rate (per 100,000 pop)	Pop. (in thousand) [†]
Cyprus	1,620	185.0	357,416	40805.6	29	1.8	3.3	875.9*
Italy	298,435	494.4	10,787,694	17872.4	35,721	12.0	59.2	60,359.5
USA	6,813,589	2070.6	79,611,982	24193.4	198,925	2.9	60.5	329,064.9
UK	397,337	596.2	17,921,869	26890.7	41,770	10.5	62.7	66,647.1
Greece	15,352	143.1	1,073,421	10009.0	342	2.2	3.2	10,724.6
Malta	2,603	527.4	216,429	43850.7	16	0.6	3.2	493.6
Sweden	88,077	861.0	1,392,176	13608.5	5,864	6.7	57.3	10,230.2
Netherlands	95,391	552.0	2,053,753	11883.7	6,267	6.6	36.3	17,282.2
Republic of Korea	22,709	44.3	2,248,217	4388.9	388	1.7	0.8	51,225.3

[†]Number of cases, number of deaths and population (in thousands) for all countries, but Cyprus, as reported by ECDC at

<https://www.ecdc.europa.eu/en/publications-data/download-todays-data-geographic-distribution-covid-19-cases-worldwide>

[§] Data for Cyprus: internal communication; data for other countries: <https://www.ecdc.europa.eu/en/publications-data/covid-19-testing>, <http://ncov.mohw.go.kr/en/>

[°] CFR: Case fatality ratio.

* Data from Statistical Service of the Republic of Cyprus, 2018 ([Statistical Service of the Republic of Cyprus](#))



Acknowledgments

We thank Antry Constantinou, Christiana Soteriou, Despina Ioannou, Irene Georgiou, Maria Clerides, Tatiana Sofocleous, and Despoina Stylianou from the Ministry of Health, and the companies CELLOCK (<https://cellock.com>) and GEOMATIC (<https://geomatic.com>) for their volunteering support.



Appendix

Table A1: Laboratory-confirmed COVID-19-cases in Cyprus by district of residence and origin (n = 1,620).

District/ <i>municipality</i>	Total		Travel-related		Unknown origin		Locally-acquired			Pop.
	N	%	N	%	N	%	N	%	N (per 100,000 pop)	
Ammochostos	90	5.6	31	7.8	13	6.8	46	4.5	95.4	48,200
Larnaka	455	28.1	50	12.5	73	38.0	332	32.3	225.9	147,000
<i>Aradippou</i>	204	12.6	16	4.0	39	20.3	149	14.5	774.9	19,228
Limassol	272	16.8	93	23.3	17	8.9	162	15.8	66.1	244,900
Nicosia	500	30.9	106	26.5	59	30.7	335	32.6	98.0	341,700
Pafos	195	12.0	27	6.8	29	15.1	139	13.5	147.7	94,100
Other	108	6.7	93	23.3	1	0.5	14	1.4		
Total	1620	100	400	100	192	100	1028	100	117.4	875,900

Other includes British Bases, abroad and unknown



Table A2: Sex and age distribution of asymptomatic cases at diagnosis (n = 650).

Characteristics	All cases (n = 1,620)	Asymptomatic cases (n = 650)	
	N	n	%
Sex			
Male	847	364	43.0
Female	773	286	37.0
Age groups (years)			
0-9	49	25	51.0
10-19	121	56	46.3
20-29	350	175	50.0
30-39	314	142	45.2
40-49	241	80	33.2
50-59	241	78	32.4
60-69	159	44	27.7
70-79	109	38	34.9
80+	35	11	31.4
Unknown	1	1	100
Median age in years (IQR*)	39 (27-55)	34 (24-50)	

*IQR: Interquartile Range

Table A3: Characteristics of all deaths (n = 29) and due to COVID-19 (n = 22)

Characteristics	All deaths		COVID-19 deaths	
	N	%	N	%
Male	22	75.9	16	72.7
Female	7	24.1	6	27.3
Age groups (years)				
0-9	0	0.0	0	0.0
10-19	0	0.0	0	0.0
20-29	0	0.0	0	0.0
30-39	0	0.0	0	0.0
40-49	1	3.4	1	4.5
50-59	2	6.9	1	4.5
60-69	8	27.6	7	31.8
70-79	13	44.8	11	50.0
80+	5	17.2	2	9.1
Median age in years (IQR*)	76 (68-78)		76 (66-77)	
District				
Ammochostos	3	10.3	1	4.5
Larnaka	11	37.9	8	36.4
Limassol	2	6.9	2	9.1
Nicosia	5	17.2	5	22.7
Pafos	8	27.6	6	27.3
Comorbidities				0.0
No	3	10.3	2	9.1
Yes	25	86.2	19	86.4
Median age in years (IQR*)	76 (68-78)		76 (66-77)	
Unknown	1	3.4	1	4.5
Diabetes	11	37.9	9	40.9
Median age in years (IQR*)	76 (69-77)		76 (69-77)	
Hypertension	9	31.0	7	31.8
Median age in years (IQR*)	76 (72-78)		76 (69-78)	
Heart disease	12	41.4	10	45.5
Median age in years (IQR*)	75 (67.5-80)		75 (66-77)	
Chronic kidney disease	7	24.1	4	18.2
Median age in years (IQR*)	77 (69-83)		76.5 (69.5-81)	
Chronic respiratory disease	4	13.8	4	18.2
Median age in years (IQR*)	75 (71-77)		75 (71-77)	



ΥΠΟΥΡΓΕΙΟ ΥΓΕΙΑΣ

Chronic liver disease	3	10.3	2	9.1
Median age in years (IQR*)	76 (69-79)		77.5 (76-79)	
Immunosuppression	0	0.0	0	0.0
Median age in years (IQR*)				
Cancer	4	13.8	1	4.5
Median age in years (IQR*)	81 (67.5-88)		79	
Autoimmunedisease	0	0.0	0	0.0
Median age in years (IQR*)				

*IQR: Interquartile Range



ΥΠΟΥΡΓΕΙΟ ΥΓΕΙΑΣ

Table A4: Number of cases by date of sampling, laboratory reporting, death, and ICU admission and number of cases in hospital (excluding ICU) and in ICU every day.

Date	Date of sampling (n = 1620)	Date of laboratory reporting (n = 1620)	Date of death (n = 29)	N of patients in hospital (excluding ICU)	Date of ICU admission (n = 34)	N. of patients in ICU
01-Mar	0	0	0	0	0	0
02-Mar	0	0	0	0	0	0
03-Mar	0	0	0	0	0	0
04-Mar	0	0	0	0	0	0
05-Mar	0	0	0	0	0	0
06-Mar	0	0	0	0	0	0
07-Mar	1	0	0	0	0	0
08-Mar	0	0	0	0	0	0
09-Mar	1	2	0	0	0	0
10-Mar	4	0	0	1	0	0
11-Mar	2	0	0	4	0	0
12-Mar	6	0	0	6	0	0
13-Mar	13	16	0	7	0	0
14-Mar	8	5	0	9	0	0
15-Mar	12	8	0	9	0	0
16-Mar	5	13	0	9	1	1
17-Mar	8	4	0	8	1	2
18-Mar	16	16	0	10	0	2
19-Mar	13	9	0	15	0	2
20-Mar	16	10	0	18	1	3
21-Mar	10	0	1	16	1	4
22-Mar	6	16	0	16	1	5
23-Mar	13	19	0	20	1	6
24-Mar	18	8	2	25	3	9
25-Mar	14	10	0	27	3	10
26-Mar	34	20	0	32	1	10
27-Mar	31	24	3	37	2	11
28-Mar	26	21	1	37	3	12
29-Mar	33	27	1	43	1	12
30-Mar	37	33	0	45	0	11
31-Mar	39	45	2	49	0	12
01-Apr	29	56	2	47	1	13



ΥΠΟΥΡΓΕΙΟ ΥΓΕΙΑΣ

Date	Date of sampling (n = 1620)	Date of laboratory reporting (n = 1620)	Date of death (n = 29)	N of patients in hospital (excluding ICU)	Date of ICU admission (n = 34)	N. of patients in ICU
02-Apr	47	29	0	56	0	12
03-Apr	21	32	1	58	2	13
04-Apr	25	38	1	57	0	12
05-Apr	9	18	0	53	0	11
06-Apr	37	23	0	48	1	13
07-Apr	39	23	0	45	1	13
08-Apr	23	32	0	47	1	14
09-Apr	17	31	1	42	1	14
10-Apr	18	20	0	43	1	14
11-Apr	37	20	1	38	0	14
12-Apr	21	16	1	35	1	15
13-Apr	26	41	0	30	0	15
14-Apr	25	25	0	32	0	14
15-Apr	15	16	0	32	0	13
16-Apr	9	19	0	31	2	15
17-Apr	4	15	0	28	0	15
18-Apr	6	7	0	28	0	14
19-Apr	0	1	0	24	0	14
20-Apr	11	6	0	23	1	15
21-Apr	6	13	0	23	0	15
22-Apr	7	5	1	23	0	14
23-Apr	13	7	1	21	0	13
24-Apr	2	12	0	23	0	10
25-Apr	9	3	0	22	0	10
26-Apr	4	2	1	18	1	11
27-Apr	16	11	0	22	0	8
28-Apr	5	16	0	25	0	7
29-Apr	9	4	0	24	0	7
30-Apr	6	5	0	22	0	6
01-May	7	8	0	21	0	6
02-May	3	7	0	20	0	6
03-May	2	4	0	21	0	6
04-May	4	6	0	20	0	6
05-May	5	4	1	23	0	6
06-May	6	4	0	22	0	5

Data are subject to change due to the rapidly evolving situation



ΥΠΟΥΡΓΕΙΟ ΥΓΕΙΑΣ

Date	Date of sampling (n = 1620)	Date of laboratory reporting (n = 1620)	Date of death (n = 29)	N of patients in hospital (excluding ICU)	Date of ICU admission (n = 34)	N. of patients in ICU
07-May	2	3	0	21	0	5
08-May	3	3	0	17	0	5
09-May	8	3	1	17	0	5
10-May	1	4	0	18	0	4
11-May	0	3	0	18	0	4
12-May	3	4	1	16	0	4
13-May	2	0	1	10	0	4
14-May	3	3	0	9	0	3
15-May	2	4	0	9	0	3
16-May	4	4	0	8	0	3
17-May	0	0	0	7	0	3
18-May	1	1	0	6	0	4
19-May	5	5	0	6	0	4
20-May	3	0	0	6	0	4
21-May	8	7	0	6	0	4
22-May	1	1	0	6	0	4
23-May	2	3	0	6	0	4
24-May	0	3	0	6	0	4
25-May	2	2	0	7	0	4
26-May	0	1	0	8	0	3
27-May	3	1	0	7	0	3
28-May	0	1	0	6	0	3
29-May	2	1	0	5	0	3
30-May	3	1	0	4	0	3
31-May	1	4	0	4	0	3
01-Jun	4	2	0	4	0	3
02-Jun	6	5	0	5	0	3
03-Jun	1	5	0	5	0	3
04-Jun	0	0	0	5	0	3
05-Jun	5	1	1	5	0	3
06-Jun	5	1	0	5	0	2
07-Jun	1	8	0	4	0	2
08-Jun	2	1	0	4	0	2
09-Jun	2	2	0	3	0	2
10-Jun	2	3	0	4	0	2

Data are subject to change due to the rapidly evolving situation



ΥΠΟΥΡΓΕΙΟ ΥΓΕΙΑΣ

Date	Date of sampling (n = 1620)	Date of laboratory reporting (n = 1620)	Date of death (n = 29)	N of patients in hospital (excluding ICU)	Date of ICU admission (n = 34)	N. of patients in ICU
11-Jun	4	1	0	4	0	2
12-Jun	0	4	0	4	0	2
13-Jun	3	0	0	4	0	2
14-Jun	2	3	0	4	0	2
15-Jun	0	2	0	5	0	2
16-Jun	0	0	0	5	0	2
17-Jun	1	0	0	5	0	2
18-Jun	0	0	1	3	0	2
19-Jun	1	1	0	2	0	1
20-Jun	1	0	0	3	0	0
21-Jun	0	1	0	3	0	0
22-Jun	1	1	0	4	0	0
23-Jun	3	2	0	3	0	0
24-Jun	0	1	0	3	0	0
25-Jun	2	1	0	3	0	0
26-Jun	0	2	0	3	0	0
27-Jun	0	0	0	3	0	0
28-Jun	2	0	0	3	0	0
29-Jun	2	4	0	3	0	0
30-Jun	1	0	0	3	0	0
01-Jul	0	1	0	3	0	0
02-Jul	1	0	0	3	0	0
03-Jul	1	0	0	3	0	0
04-Jul	3	4	0	3	0	0
05-Jul	0	1	0	3	0	0
06-Jul	2	0	0	3	0	0
07-Jul	2	3	0	2	0	0
08-Jul	2	3	0	2	0	0
09-Jul	3	2	0	2	0	0
10-Jul	8	1	0	2	0	0
11-Jul	0	8	0	2	0	0
12-Jul	1	0	0	2	0	0
13-Jul	1	1	0	2	0	0
14-Jul	2	2	0	2	0	0
15-Jul	7	5	0	3	0	0

Data are subject to change due to the rapidly evolving situation



ΥΠΟΥΡΓΕΙΟ ΥΓΕΙΑΣ

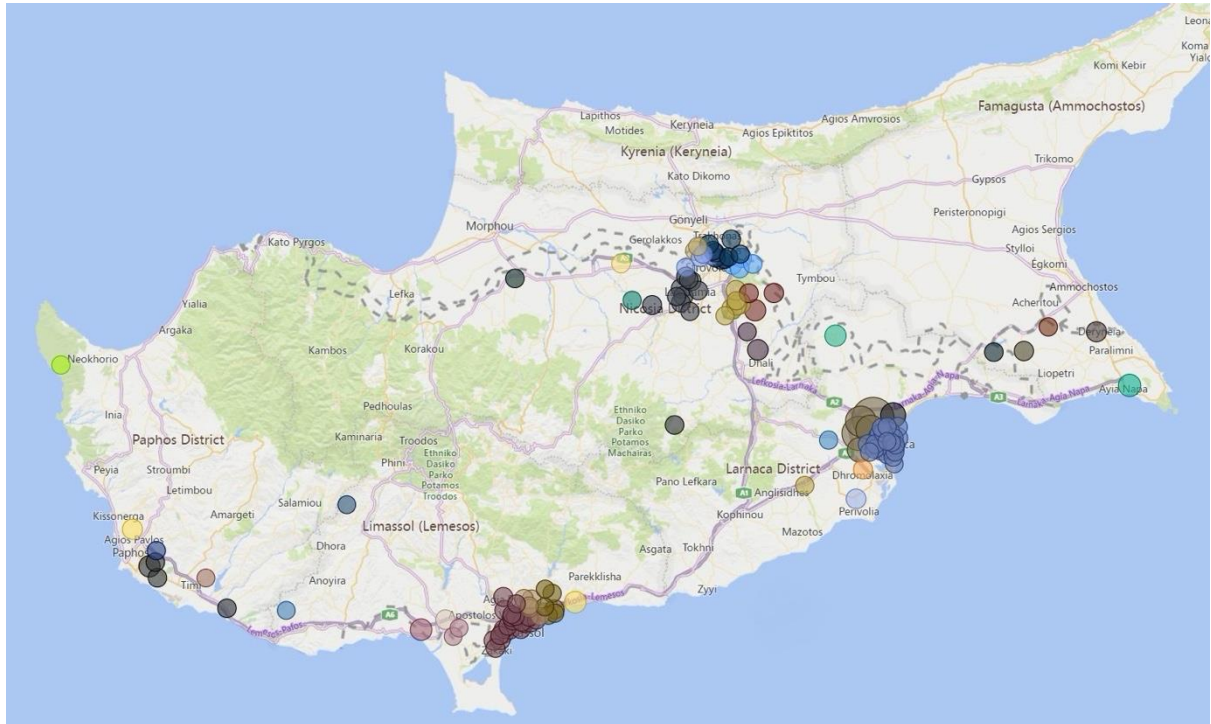
Date	Date of sampling (n = 1620)	Date of laboratory reporting (n = 1620)	Date of death (n = 29)	N of patients in hospital (excluding ICU)	Date of ICU admission (n = 34)	N. of patients in ICU
16-Jul	0	3	0	3	0	0
17-Jul	5	5	0	3	0	0
18-Jul	1	1	0	3	0	0
19-Jul	0	0	0	3	0	0
20-Jul	2	1	0	3	0	0
21-Jul	0	1	0	3	0	0
22-Jul	5	4	0	3	0	0
23-Jul	2	3	0	2	0	0
24-Jul	9	7	0	3	0	0
25-Jul	3	2	0	3	0	0
26-Jul	1	2	0	3	0	0
27-Jul	3	3	0	3	0	0
28-Jul	18	9	0	4	0	0
29-Jul	9	17	0	7	0	0
30-Jul	32	20	0	8	0	0
31-Jul	20	14	0	9	0	0
01-Aug	14	29	0	10	0	0
02-Aug	12	5	1	8	0	0
03-Aug	18	24	0	7	0	0
04-Aug	14	12	0	7	0	0
05-Aug	19	12	0	8	0	0
06-Aug	8	17	0	7	0	0
07-Aug	11	6	0	9	0	0
08-Aug	6	14	0	7	0	0
09-Aug	7	4	0	7	0	0
10-Aug	27	20	0	7	0	0
11-Aug	21	17	0	7	0	0
12-Aug	10	23	0	7	0	0
13-Aug	19	8	0	4	0	0
14-Aug	14	16	0	4	0	0
15-Aug	5	9	0	4	0	0
16-Aug	7	10	0	4	0	0
17-Aug	18	9	0	2	1	1
18-Aug	14	19	0	2	0	1
19-Aug	10	18	0	2	0	1



ΥΠΟΥΡΓΕΙΟ ΥΓΕΙΑΣ

Date	Date of sampling (n = 1620)	Date of laboratory reporting (n = 1620)	Date of death (n = 29)	N of patients in hospital (excluding ICU)	Date of ICU admission (n = 34)	N. of patients in ICU
20-Aug	13	5	0	3	0	1
21-Aug	10	11	0	3	0	1
22-Aug	3	10	0	3	0	1
23-Aug	10	8	0	5	0	1
24-Aug	17	11	0	5	0	1
25-Aug	8	12	0	6	0	1
26-Aug	18	13	0	7	0	1
27-Aug	7	11	0	6	0	1
28-Aug	3	9	0	6	0	1
29-Aug	3	4	0	7	0	1
30-Aug	2	2	0	8	0	1
31-Aug	1	1	0	8	0	1
01-Sep	5	3	1	7	0	1
02-Sep	5	3	0	6	0	1
03-Sep	2	2	0	6	1	2
04-Sep	5	8	0	6	0	2
05-Sep	1	3	0	3	0	2
06-Sep	1	0	0	3	0	2
07-Sep	2	2	1	3	0	2
08-Sep	3	1	0	4	0	1
09-Sep	2	3	0	4	0	1
10-Sep	2	3	0	4	0	1
11-Sep	5	1	0	4	0	1
12-Sep	7	5	0	4	0	1
13-Sep	1	8	0	4	0	1
14-Sep	9	7	0	6	0	1
15-Sep	9	4	0	5	0	1
16-Sep	11	13	0	5	0	1
17-Sep	10	6	0	6	0	1
18-Sep	13	18	0	6	0	1
19-Sep	17	13	0	7	0	1
20-Sep	10	10	0	9	0	1
21-Sep	8	14	0	9	0	1
22-Sep	1	3	0	12	0	0

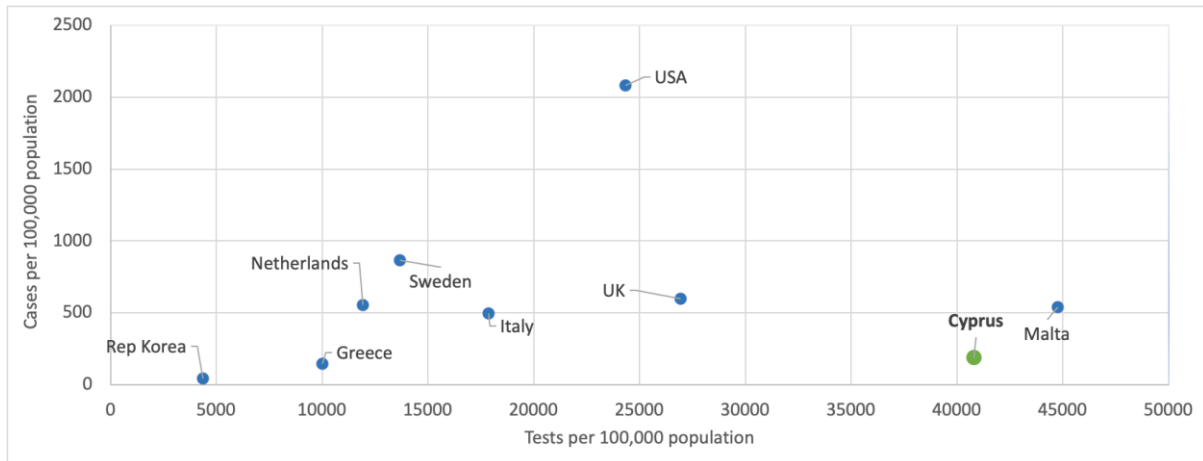
Figure A1: Distribution of cases by postal code (n = 1,507 with information available).



Each colour represents a different postal code and the size changes according to the number of cases.



Figure A2: Cumulative tests and cases per 100,000 population in Cyprus and other selected countries (Updated: 22/09/2020).



Data source for Cyprus: internal communication; data source for other countries:

<https://www.finndx.org/covid-19/test-tracker/>

Numbers of cases and tests for Cyprus are aggregated and include people from abroad and the British bases, while the total population does not include inhabitants from abroad or from the British bases.



Figure A3: Time from date of sampling to death of COVID-19 cases who died (n = 29; for three cases who died on the day of sampling/reporting, the time alive has been considered 0.5 days).

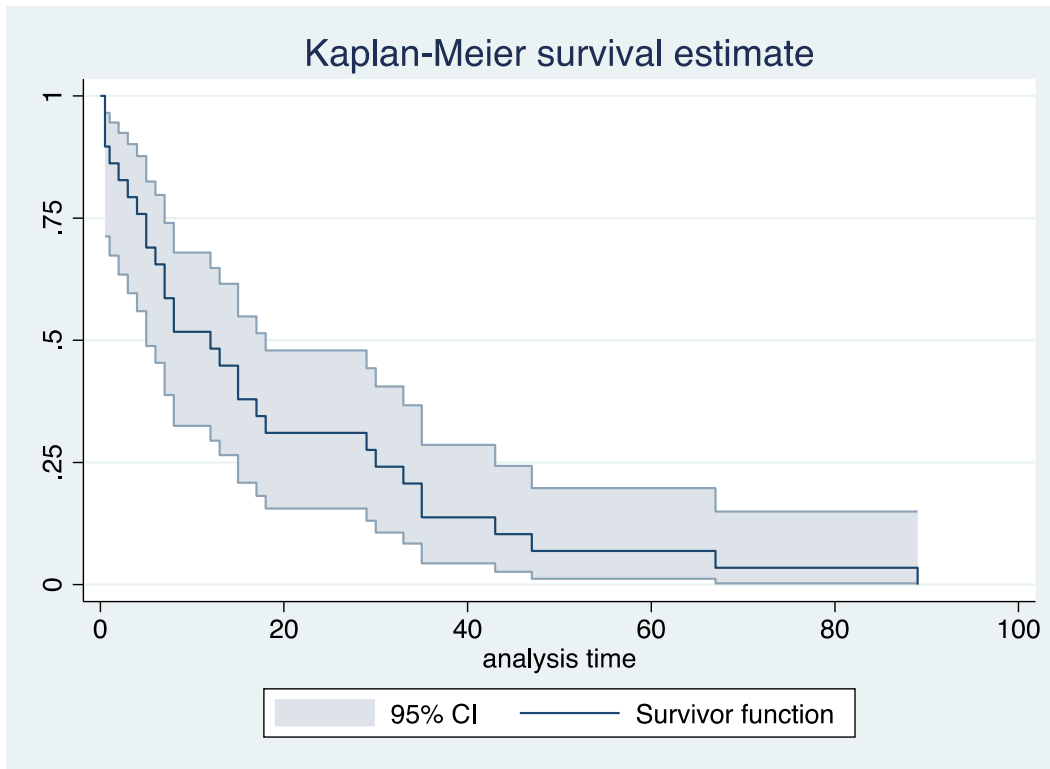




Figure A4: Length of stay in ICU (n = 34; for two cases who died on the same day of ICU admission the length of stay in ICU has been considered 0.5 days).

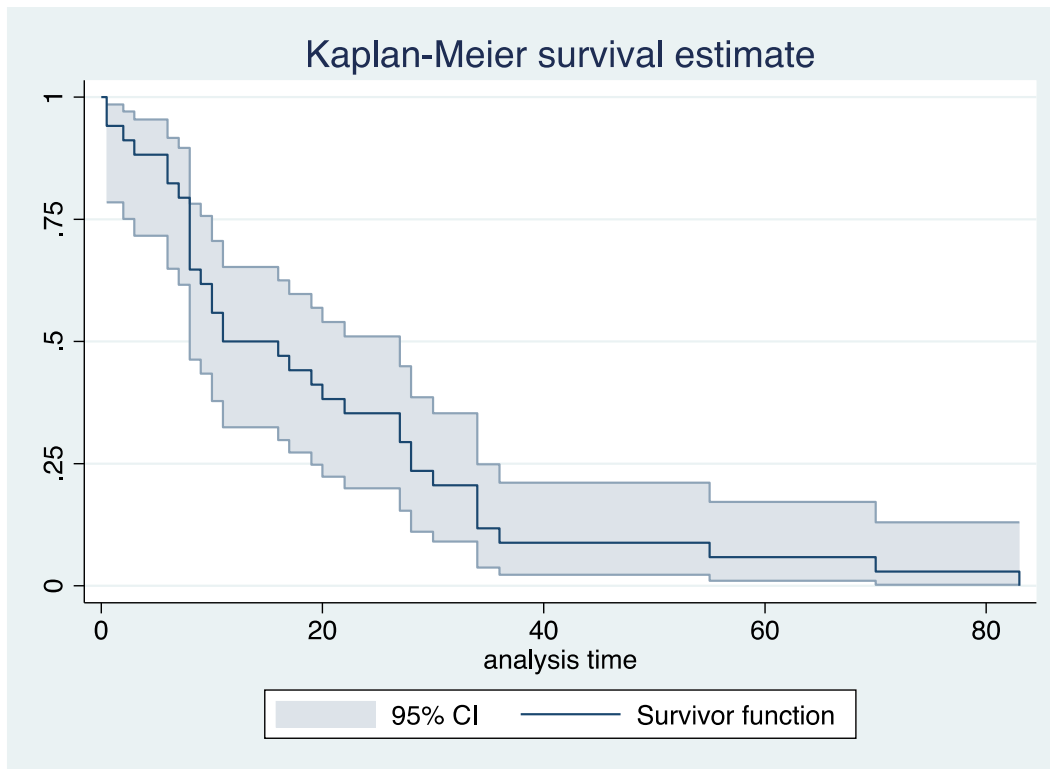
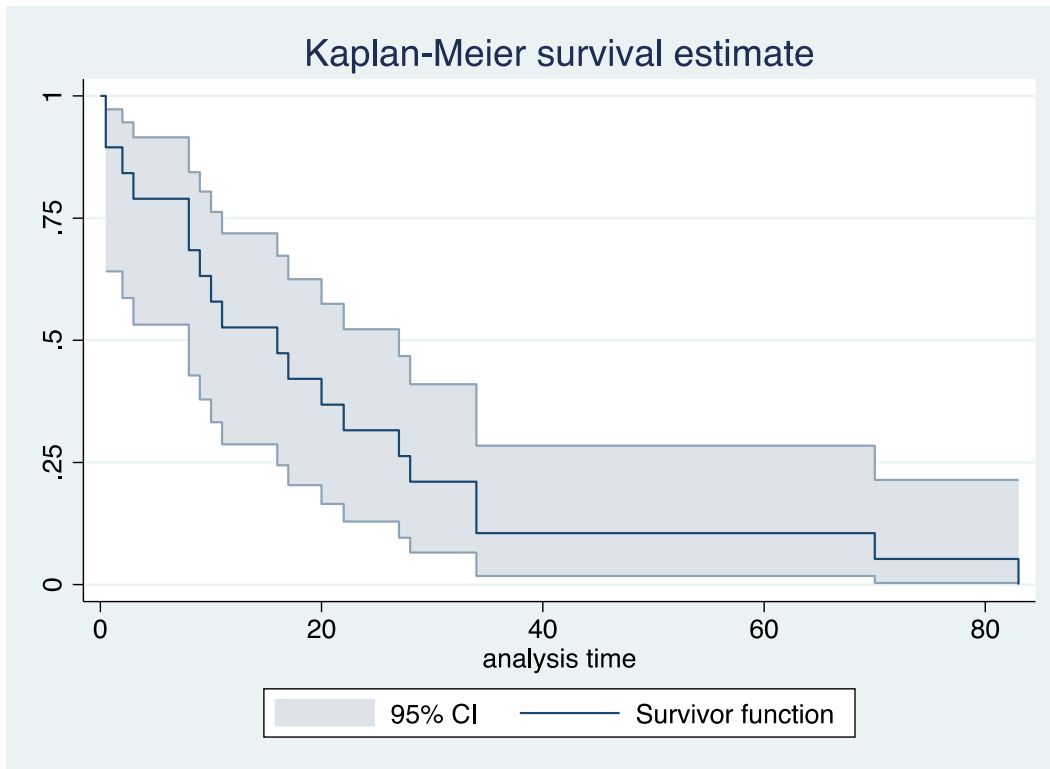




Figure A5: Length of stay in ICU of patients who died and had been admitted to an ICU (n = 19; for two cases who died the same day of ICU admission the length of stay in ICU has been considered 0.5 days).





ΥΠΟΥΡΓΕΙΟ ΥΓΕΙΑΣ

Table B1: Characteristics of cases by origin of infection, since July 1st

Characteristics	Total (n = 622)		Imported (n = 224)		Locally-acquired (n = 349)		Unknown (n = 49)	
	N	%	N	%	N	%	N	%
Sex								
Male	339	54.5	137	61.2	172	49.3	30	61.2
Female	283	45.5	87	38.8	177	50.7	19	38.8
Age groups (years)								
0-9	18	2.9	2	0.9	15	4.3	1	2.0
10-19	72	11.6	21	9.4	46	13.2	5	10.2
20-29	199	32.0	103	46.0	82	23.5	14	28.6
30-39	118	19.0	48	21.4	61	17.5	9	18.4
40-49	76	12.2	17	7.6	54	15.5	5	10.2
50-59	67	10.8	17	7.6	44	12.6	6	12.2
60-69	44	7.1	7	3.1	33	9.5	4	8.2
70-79	23	3.7	8	3.6	12	3.4	3	6.1
80+	4	0.6	1	0.4	1	0.3	2	4.1
Unknown	1	0.2	0	0	1	0.3	0	0
Median age in years (IQR*)	31 (23-46)		28 (23-37)		34 (24-50)		35 (24-55)	
District								
Ammochostos	40	6.4	16	7.1	20	5.7	4	8.2
Larnaka	207	33.3	29	12.9	153	43.8	25	51.0
Limassol	153	24.6	53	23.7	97	27.8	3	6.1
Nicosia	115	18.5	43	19.2	59	16.9	13	26.5
Pafos	29	4.7	11	4.9	14	4.0	4	8.2
Other	78	12.5	72	32.1	6	1.7	0	0.0
Symptoms at diagnosis								
Yes	293	47.1	67	29.9	202	57.9	24	49.0
No	311	50.0	142	63.4	145	41.5	24	49.0
Unknown	18	2.9	15	6.7	2	0.6	1	2.0



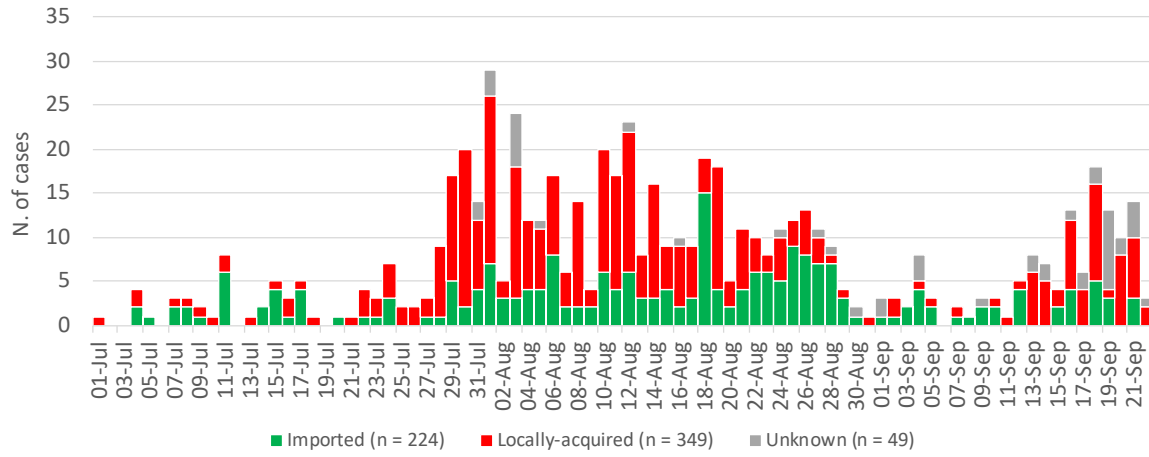
ΥΠΟΥΡΓΕΙΟ ΥΓΕΙΑΣ

Table B2: Characteristics of patients ever admitted to ICU, by patient status at ICU discharge

Characteristics	Total cases		Discharged alive		Deceased in ICU	
	N	%	N	%	N	%
Total	34	100.0	15	44.1	19	55.9
Sex						
Male	25	73.5	11	73.3	14	73.7
Female	9	26.5	4	26.7	5	26.3
Age groups (years)						
0-9	0	0.0	0	0.0	0	0.0
10-19	0	0.0	0	0.0	0	0.0
20-29	1	2.9	1	6.7	0	0.0
30-39	2	5.9	2	13.3	0	0.0
40-49	2	5.9	1	6.7	1	5.3
50-59	7	20.6	5	33.3	2	10.5
60-69	11	32.4	3	20.0	7	36.8
70-79	10	29.4	3	20.0	8	42.1
80+	1	2.9	0	0.0	1	5.3
Median age (IQR)	67 (56-76)		58 (47-69)		69 (65-76)	
Symptoms at diagnosis (yes)	31	91.2	14	93.3	17	89.5
Cough	17	50.0	7	46.7	10	52.6
Fever	18	52.9	9	60.0	9	47.4
Myalgia	4	11.8	2	13.3	2	10.5
Sore throat	4	11.8	2	13.3	2	10.5
Anosmia	0	0.0	0	0.0	0	0.0
Shortness of breath	11	32.4	4	26.7	7	36.8
Comorbidities (yes)	25	73.5	8	53.3	16	84.2
Diabetes	9	26.5	2	13.3	7	36.8
Hypertension	12	35.3	6	40.0	6	31.6
Heart diseases	10	29.4	2	13.3	8	42.1
Chronic kidney disease	3	8.8	0	0.0	3	15.8
Chronic respiratory disease	4	11.8	0	0.0	4	21.1
Chronic liver disease	1	2.9	0	0.0	1	5.3
Cancer	2	5.9	1	6.7	1	5.3
Immunosuppression	1	2.9	1	6.7	0	0.0



Figure B1: Number of cases by origin of infection, since July 1st





ΥΠΟΥΡΓΕΙΟ ΥΓΕΙΑΣ

Figure B2: Number of cases by origin of infection for each district, since July 1st (n = 622)

