

Coronavirus Disease 2019 (COVID-19) in the Republic of Cyprus

Surveillance Report as of 24/09/2021

Nicosia 01/10/2021

Data in brief

Laboratory-confirmed cases

119,072

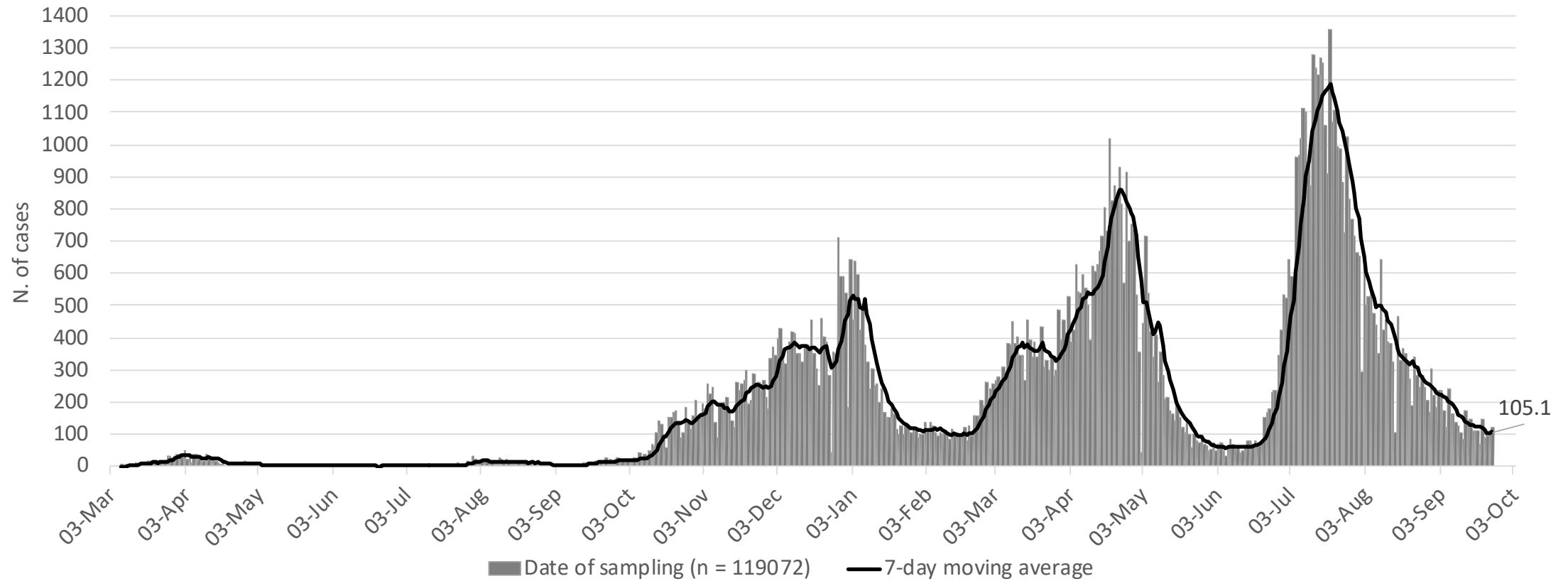
Deaths (%)
Mortality due to COVID-19

552 (0.5%)
62.2/100,000

Hospital care

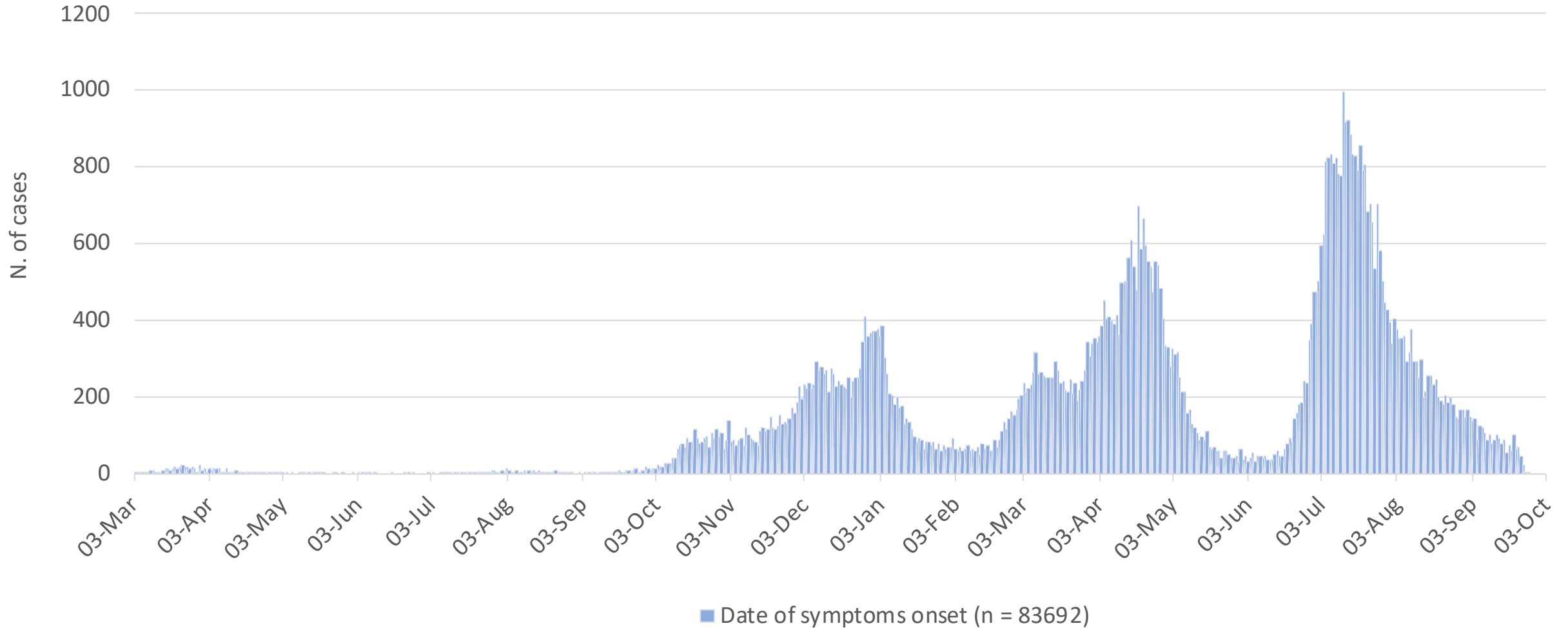
5,578 (4.7%)

Laboratory-confirmed cases by date of sampling

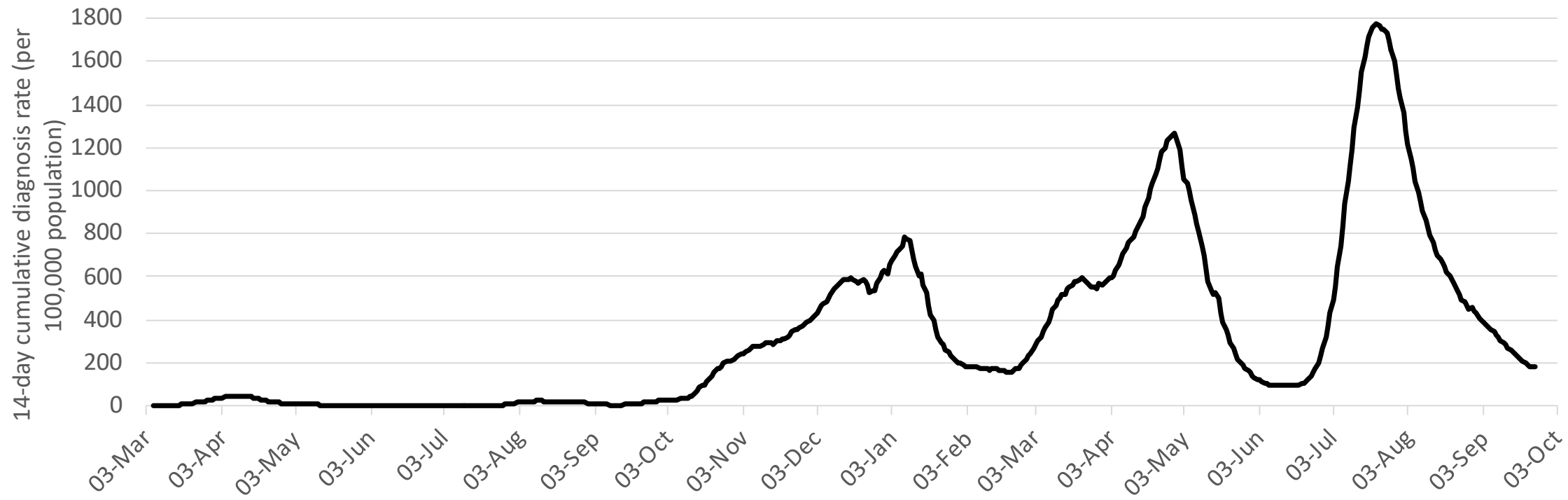


7-day moving average on September 24th is shown on the graph

Laboratory-confirmed cases by date of symptom onset



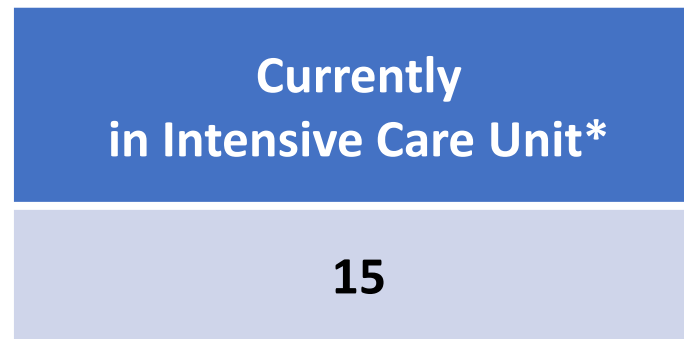
COVID-19 14-day cumulative diagnosis rate per 100,000 population (proxy of COVID-19 prevalence)



Data in brief (Last 14 days; 11 – 24 September 2021)

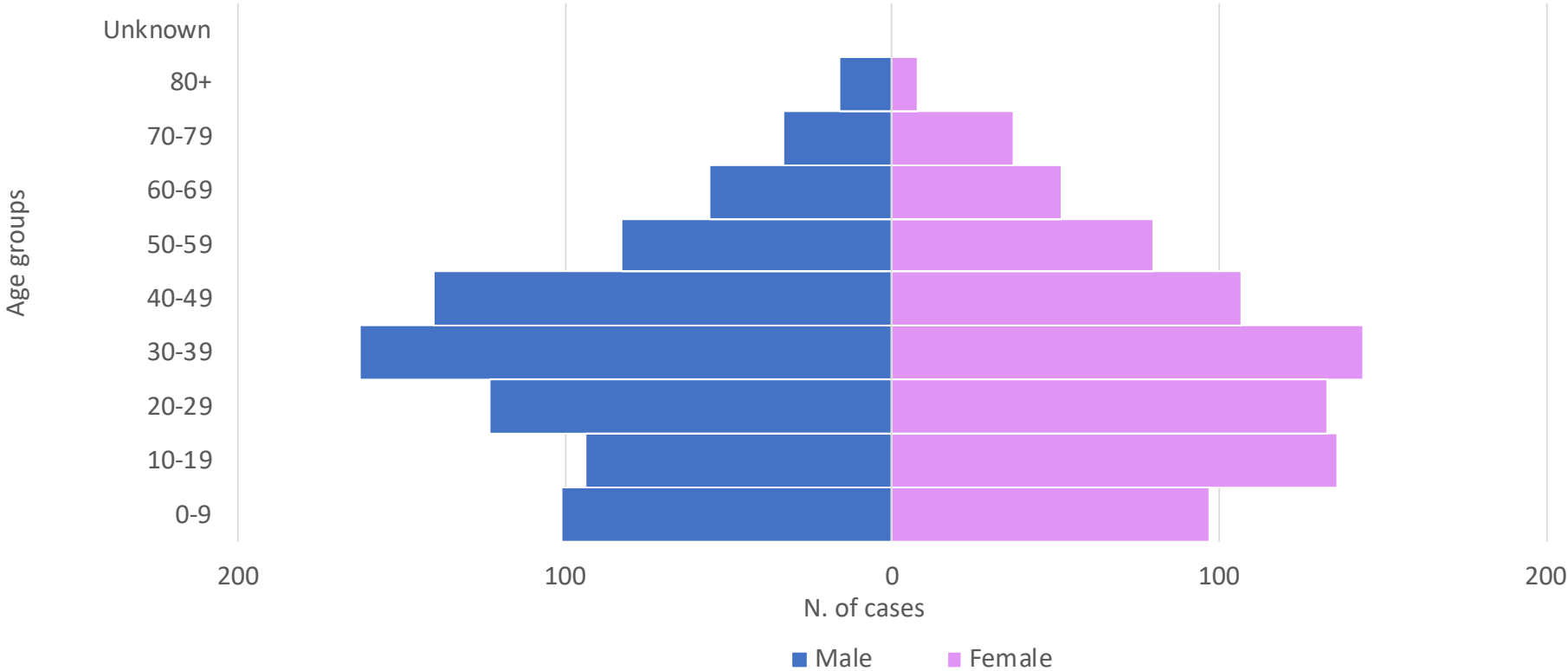


+Information was available for 1,575 cases



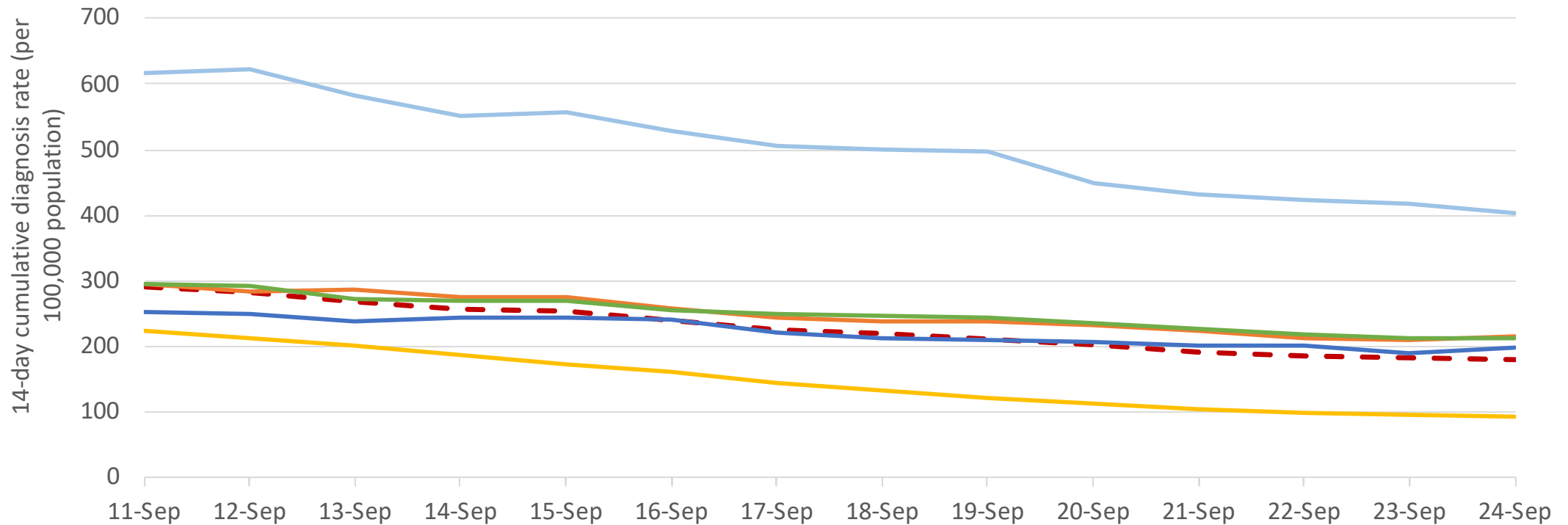
**Date of discharge/transfer/death included*

Distribution of cases diagnosed in the last 14 days by sex and age group (information on gender available for n = 1,603 of 1,606 diagnoses)



Median age: 34 years (interquartile range: 18-48 years)

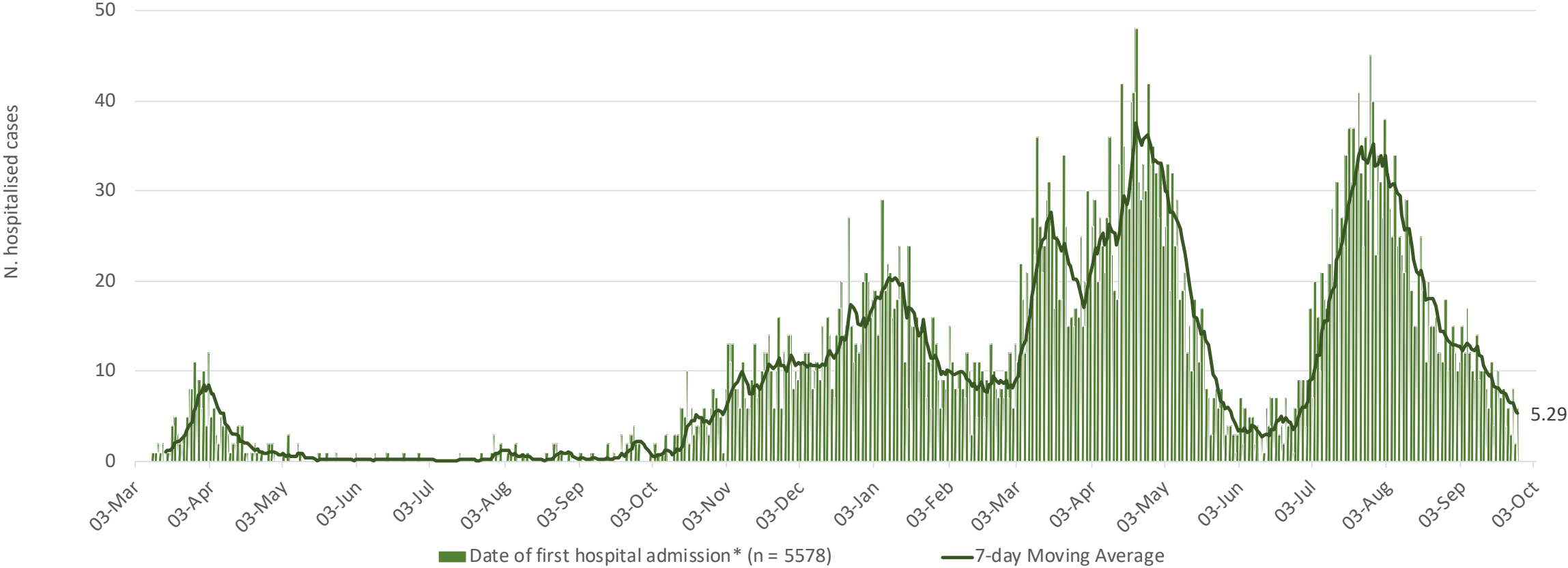
COVID-19 14-day cumulative diagnosis rate per 100,000 population, overall and by district for the last 14 days



- - Total (n = 1606)
 — Ammochostos (n = 197)
 — Lamaka (n = 319)
 — Limassol (n = 528)
 — Nicosia (n = 323)
 — Pafos (n = 188)

180.9	402.9	214.1	212.6	93.2	197.1
September 24 th , 2021					

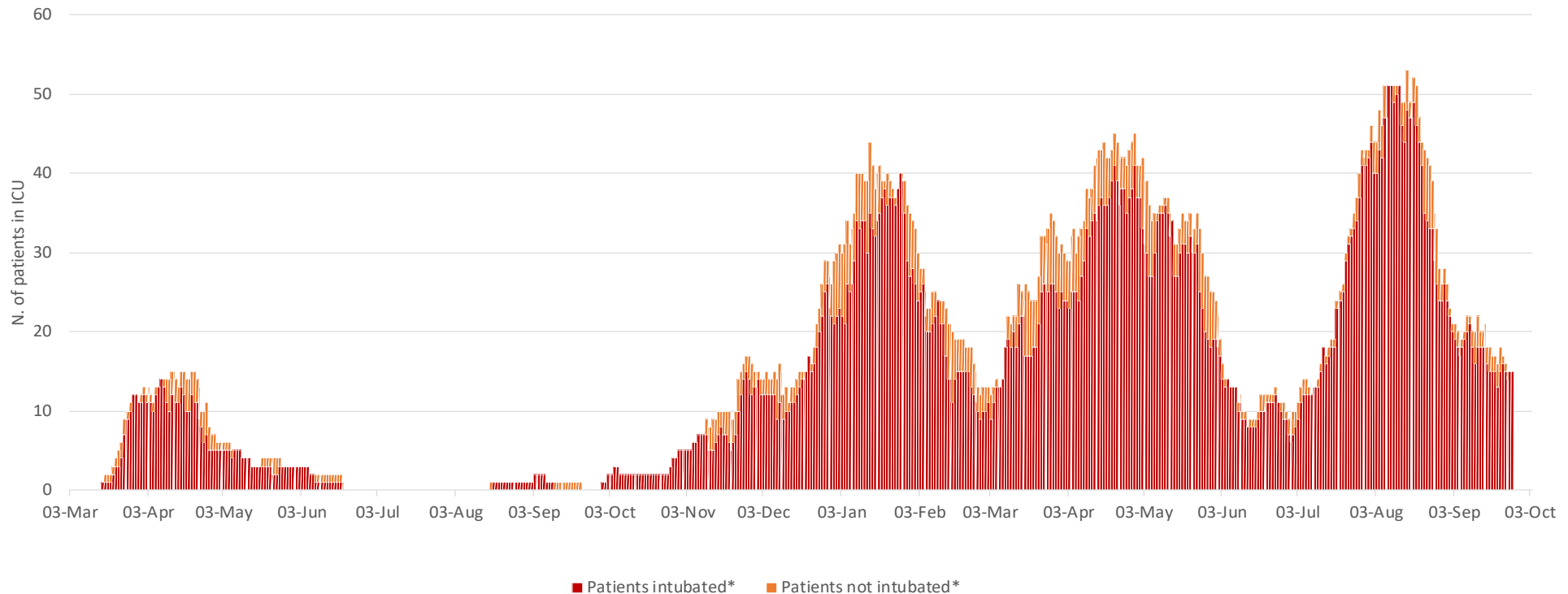
Number of cases by date of hospital admission



7 day moving average on September 26th is shown on the graph

Cases in intensive care units (ICU)*

- Total: 591 (10,6% of all ever hospitalized patients) have ever been admitted to ICU – 15 (diagnosis till September 24th - currently in ICU as of September 26th)

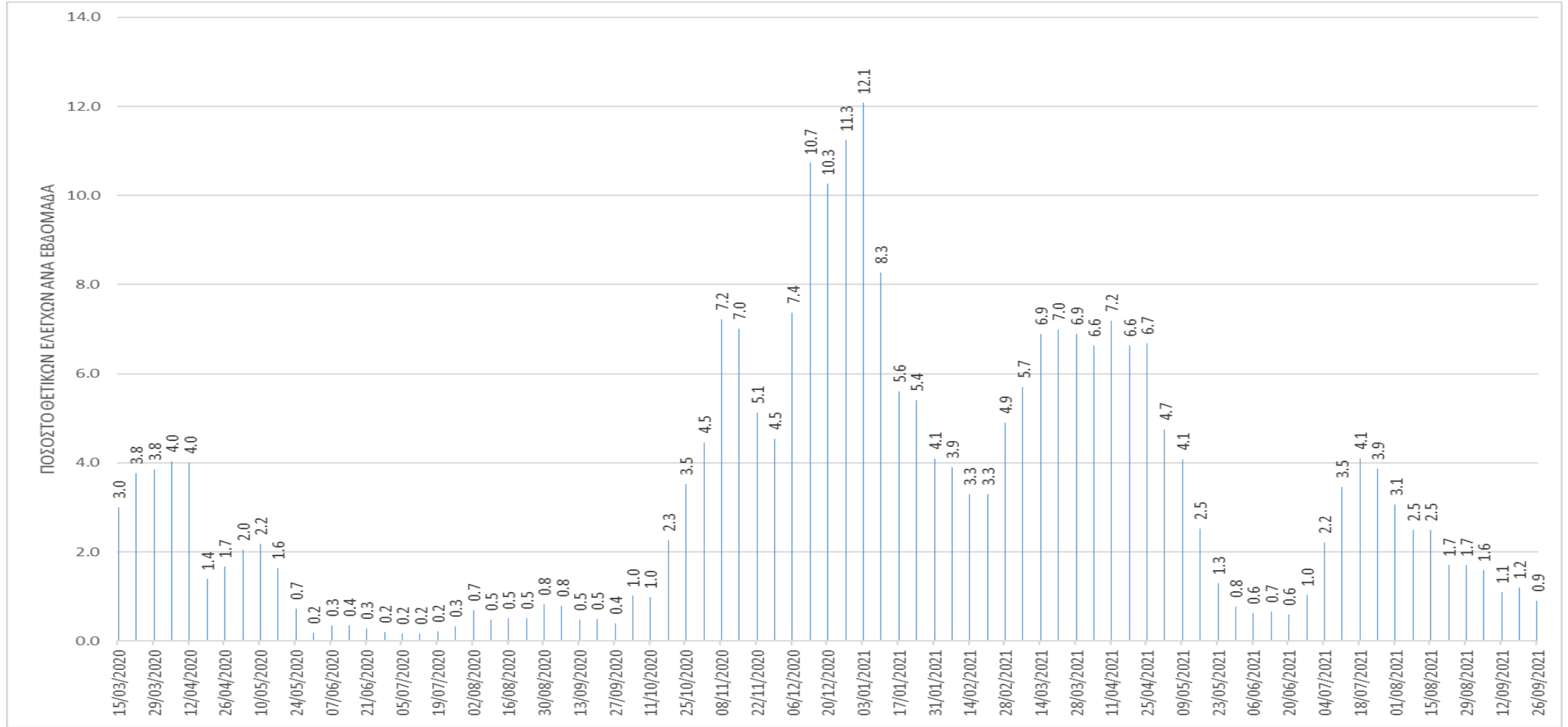


*Intensive care unit (ICU) refers only to the ICU in Limassol General Hospital and ICU in Nicosia General Hospital
Date of discharge/transfer/death included

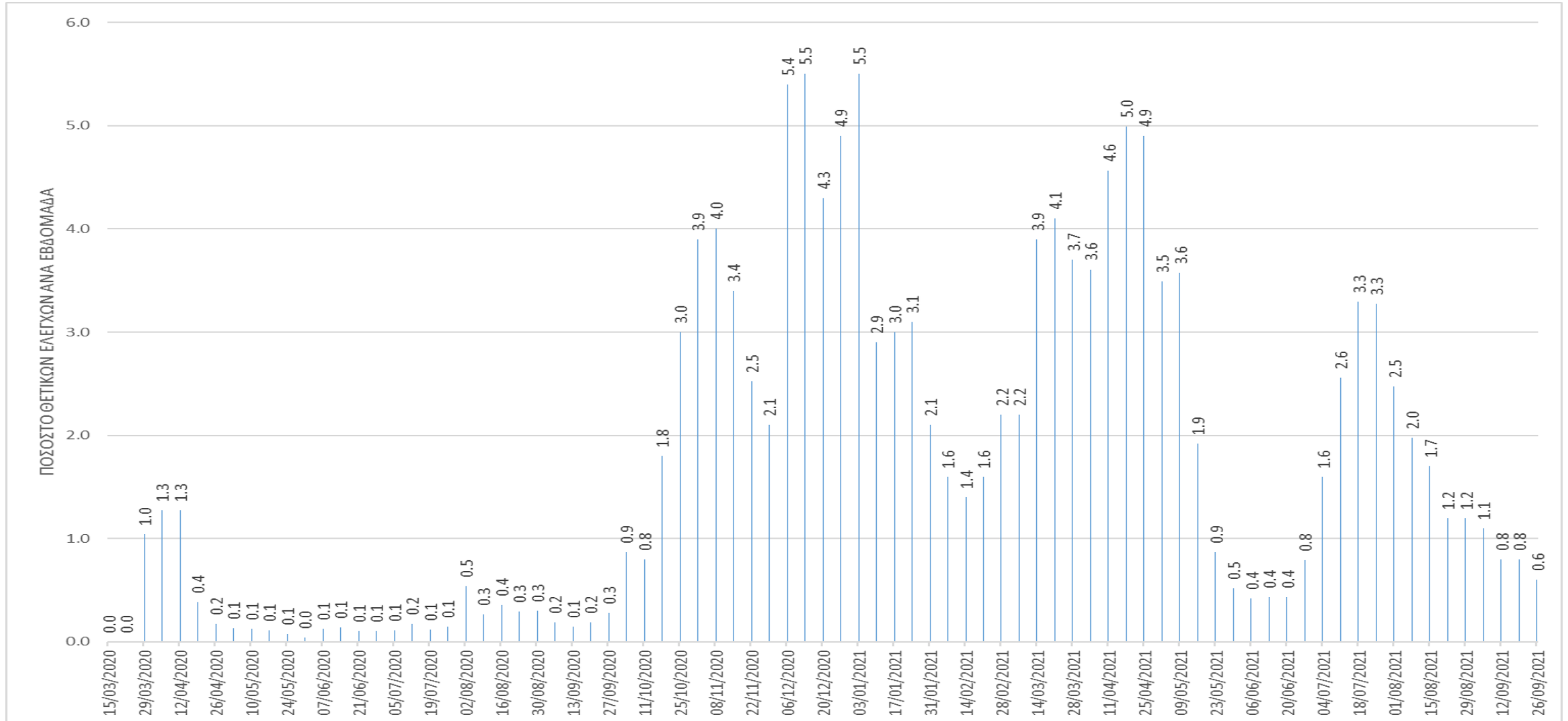
Molecular tests and antigen rapid tests

	Molecular tests (as announced by the Ministry of Health)	Antigen rapid tests
Total overall	2,166,041	11,044,561
Tests/100.000	243,923.5	1,243,756.9
Total (Last 14 days)	76,191	677,041
Last 14 days/100.000	8,580.1	76,243.4

Percentage of laboratory tests (molecular) with a positive result (all labs), per week



Percentage of laboratory tests (molecular) with a positive result (private sector), per week



Laboratory tests for SARS-CoV-2

- Epidemiological Surveillance Unit, Ministry of Health
- Contributors: Christiana Dimitriou, Anna Demetriou, Maria Prokopiou, Christos Charalambous, Eleni Anastasiou, Carolina Stylianou, Ourania Kolokotroni, Annalisa Quattrocchi, Ioanna Gregoriou, Olga Kalakouta, Georgios Nikolopoulos

Epidemiological Surveillance Unit of the Ministry of Health, Republic of Cyprus

- Contributors: Annalisa Quattrocchi, Ioannis Mamais, Valentinos Silvestros, Anna Demetriou (Health Monitoring Unit), Maria Athanasiadou (Health Monitoring Unit), Theopisti Kyprianou (Health Monitoring Unit), Androulla Stylianou, Sotiroula Sotiriou, Fani Theofhanous, Christos Charalambous, Ioanna Gregoriou, Maria Koliou, Olga Kalakouta, Georgios Nikolopoulos
- Scientific Committee: Constantinos Constantinou, Niki Paphitou, Georgios Nikolopoulos, Maria Koliou, George Panos, Eirini Christaki, Zoi - Dorothea Pana, Constantinos Tsioutis, Christos Petrou, Peter Karayiannis, George Petrikkos, Petros Agathangelou, Constantinos Phellas, George Mixides