

# **Coronavirus Disease 2019 (COVID-19) in the Republic of Cyprus**

**Surveillance Report as of 03/01/2022**

Nicosia 06/01/2022

# Data in brief

Laboratory-confirmed cases

172,928

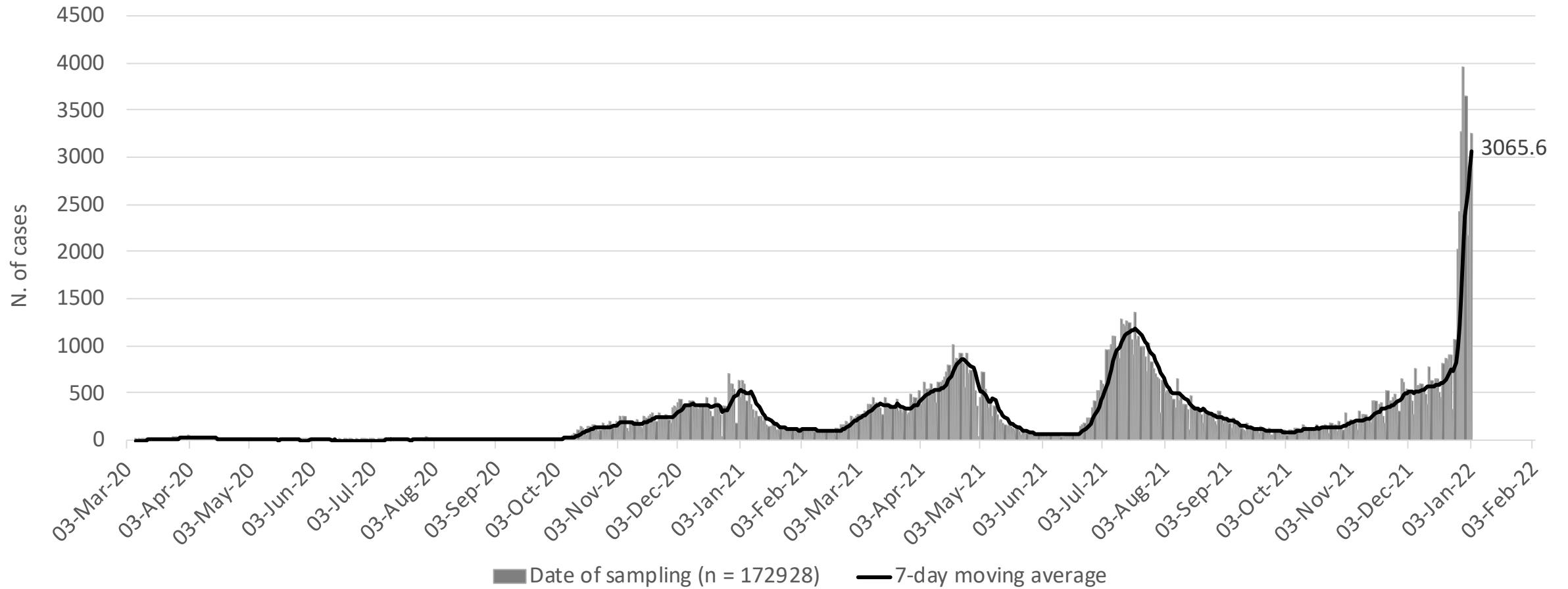
Deaths (%)  
Mortality due to COVID-19

647 (0.4%)  
72.9/100,000

Hospital care

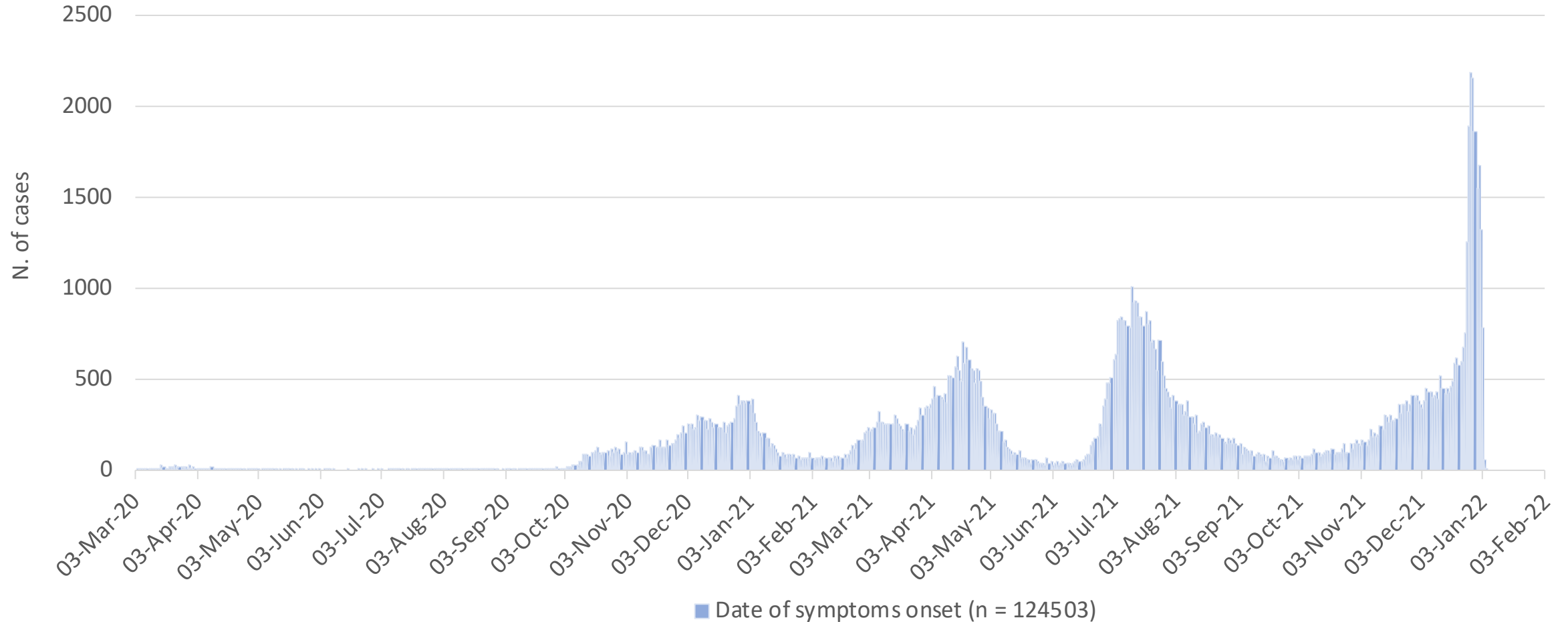
6,583 (3.8%)

# Laboratory-confirmed cases by date of sampling

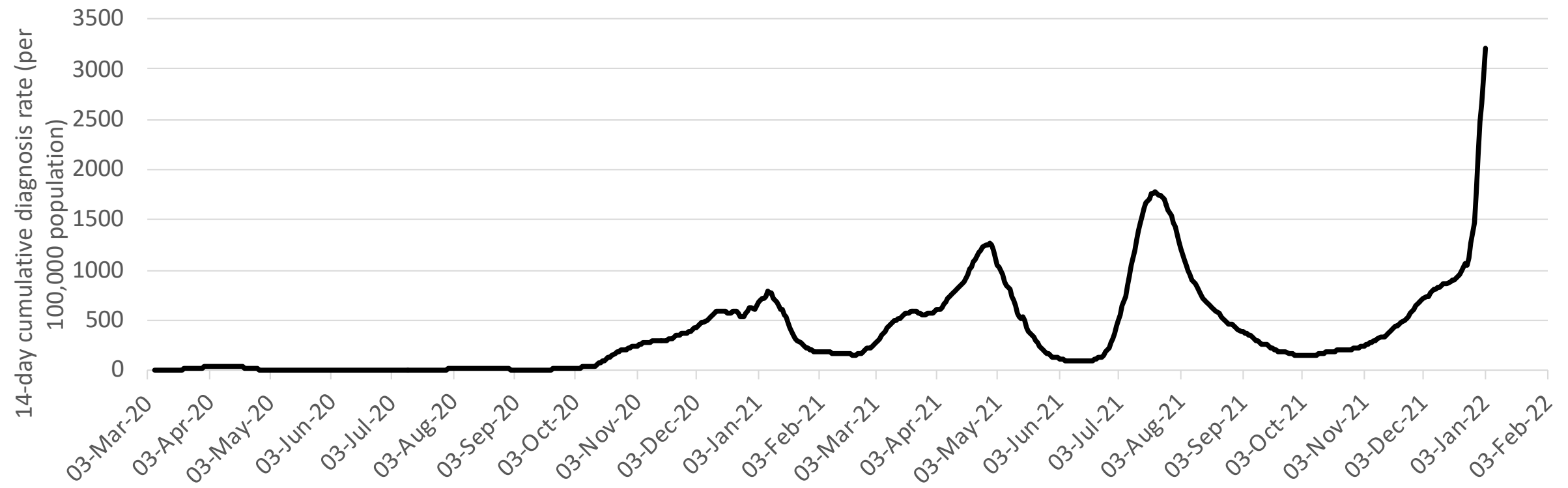


7-day moving average on January 3<sup>rd</sup> is shown on the graph

# Laboratory-confirmed cases by date of symptom onset



# COVID-19 14-day cumulative diagnosis rate per 100,000 population (proxy of COVID-19 prevalence)



# Data in brief (Last 14 days; 21 December 2021 – 03 January 2022)

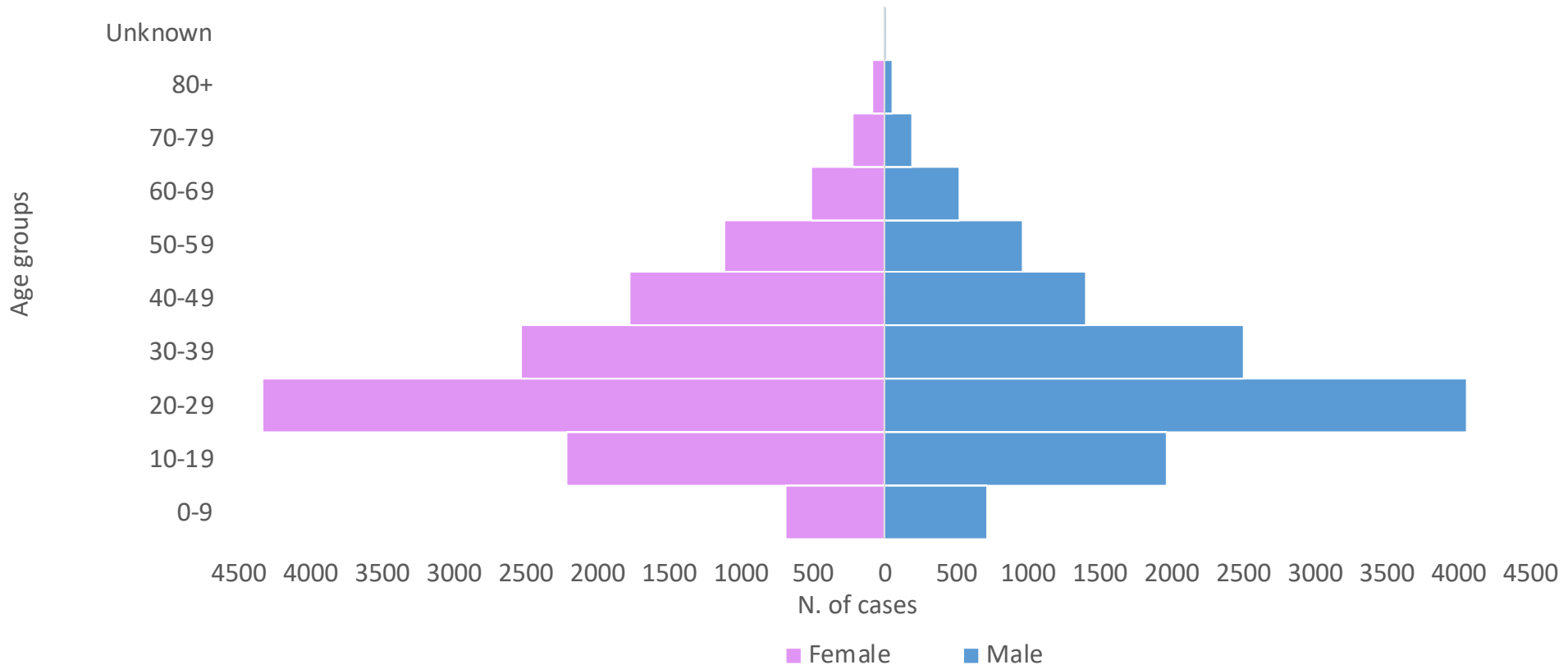
Laboratory-confirmed cases	Locally-acquired (%)
28,414	26,848 (96.4%)+

*+Information was available for 27,850 cases*

Currently in Intensive Care Unit*
36

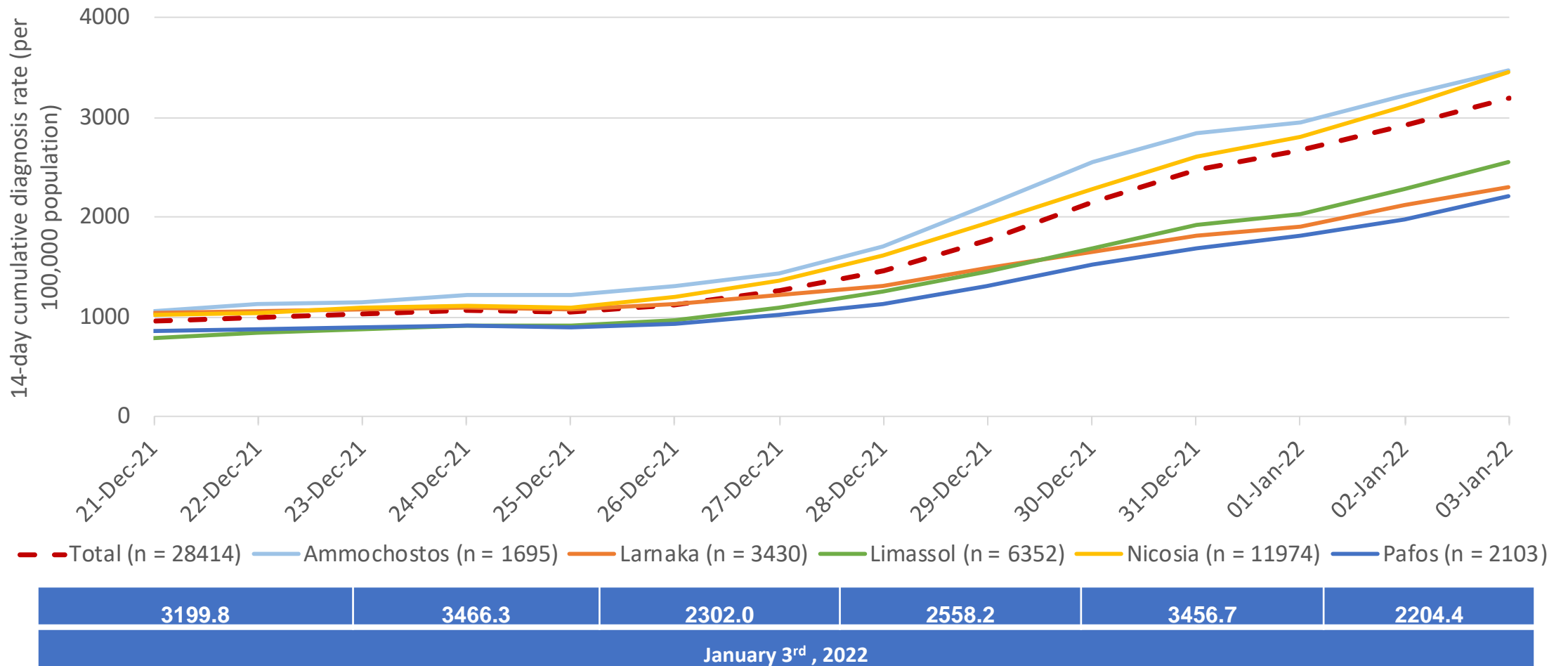
*\*Date of discharge/transfer/death included*

# Distribution of cases diagnosed in the last 14 days by sex and age group (n = 28,413)



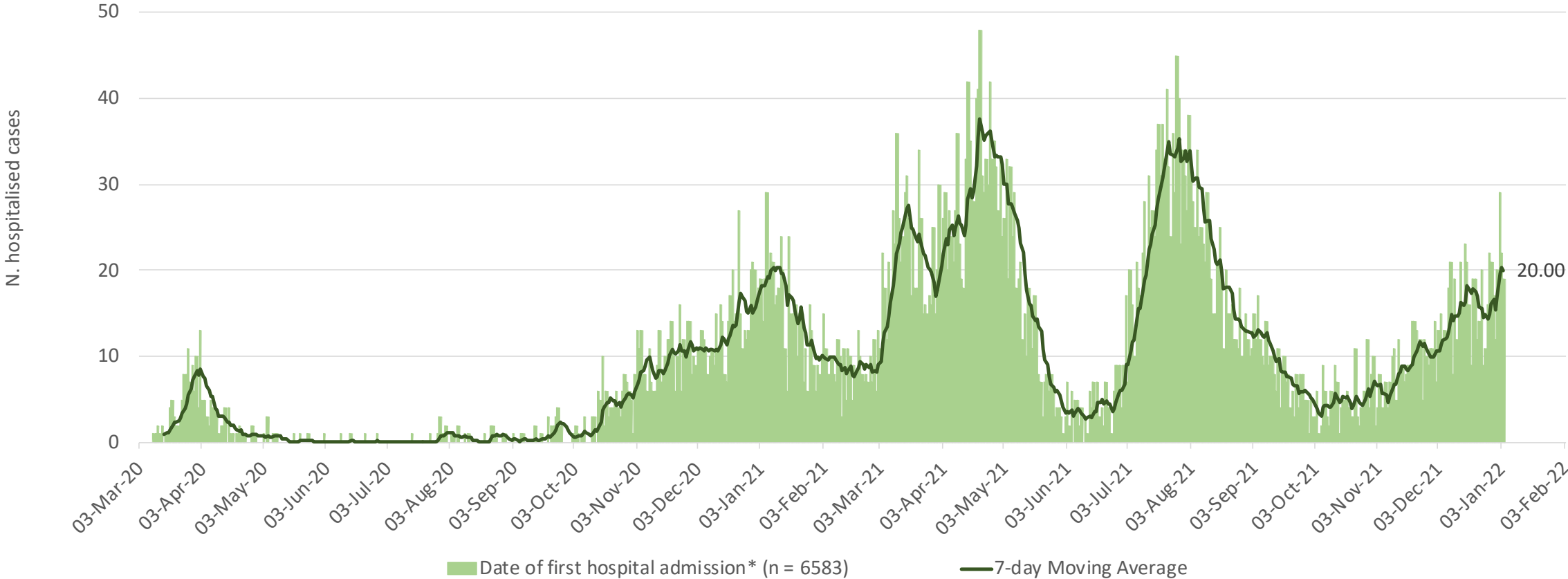
Median age: 28 years (interquartile range: 21-41 years)

# COVID-19 14-day cumulative diagnosis rate per 100,000 population, overall and by district for the last 14 days





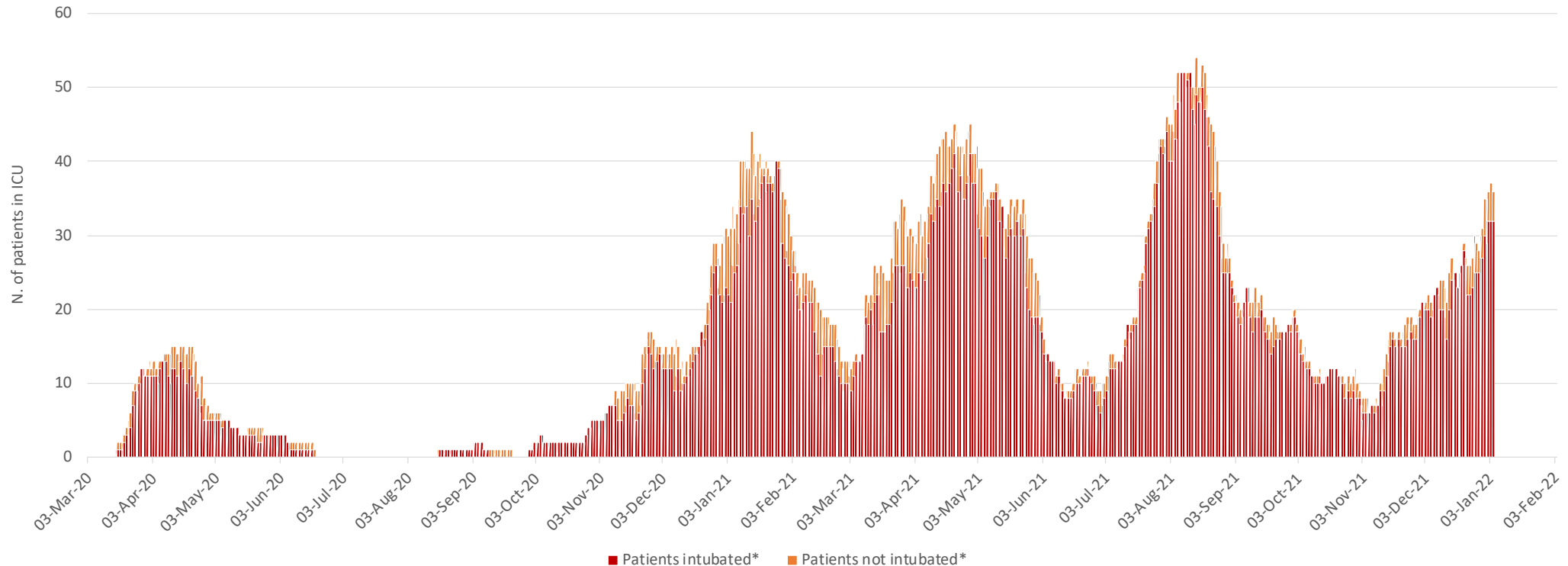
# Number of cases by date of hospital admission



7 day moving average on January 4<sup>th</sup> is shown on the graph

# Cases in intensive care units (ICU)\*

- Total: 725 (11% of all ever hospitalized patients) have ever been admitted to ICU – 36 (diagnosis till January 3<sup>rd</sup> - currently in ICU as of January 4<sup>th</sup>)

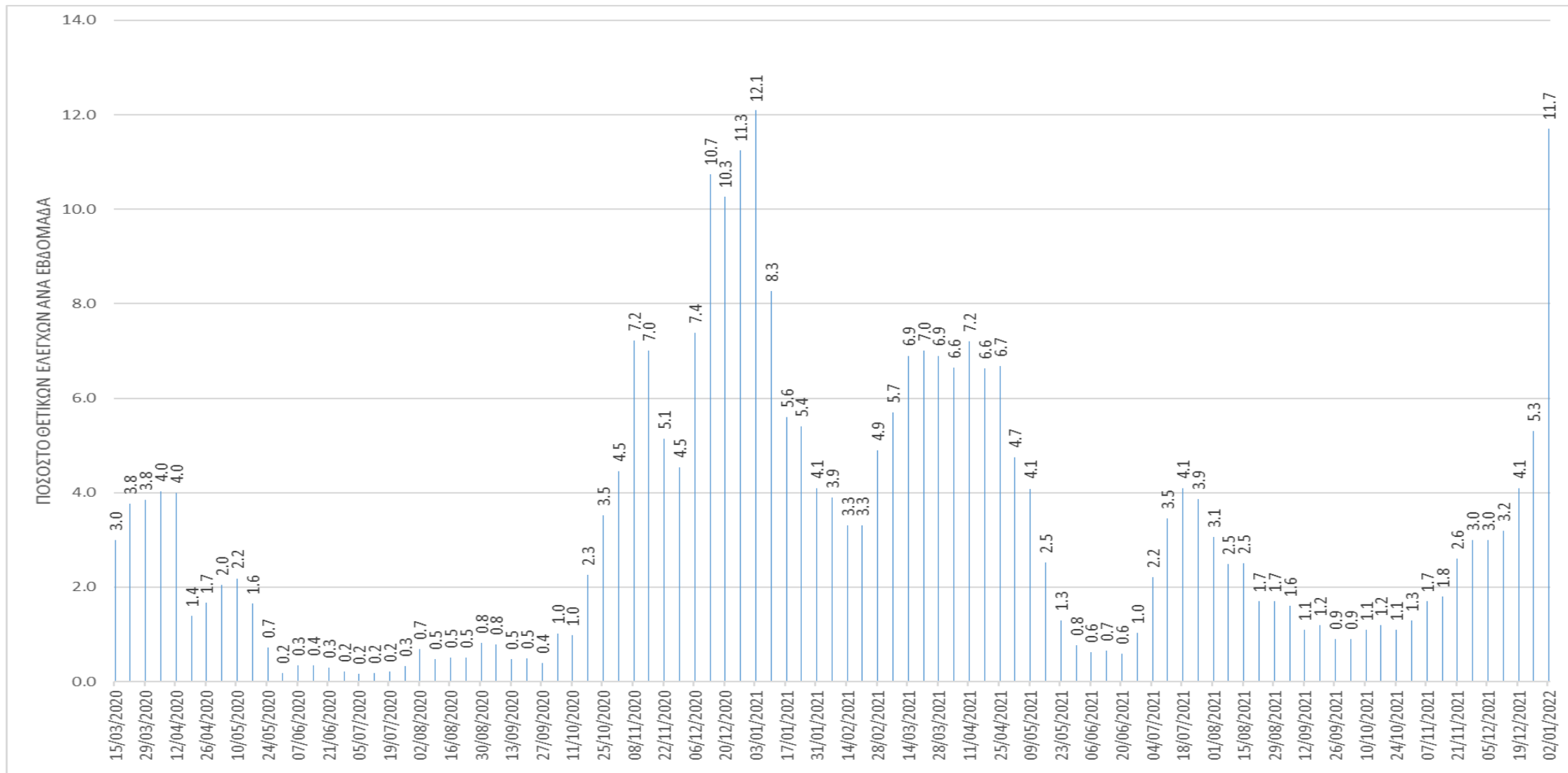


\*Intensive care unit (ICU) refers only to the ICU in Limassol General Hospital and ICU in Nicosia General Hospital  
*Date of discharge/transfer/death included*

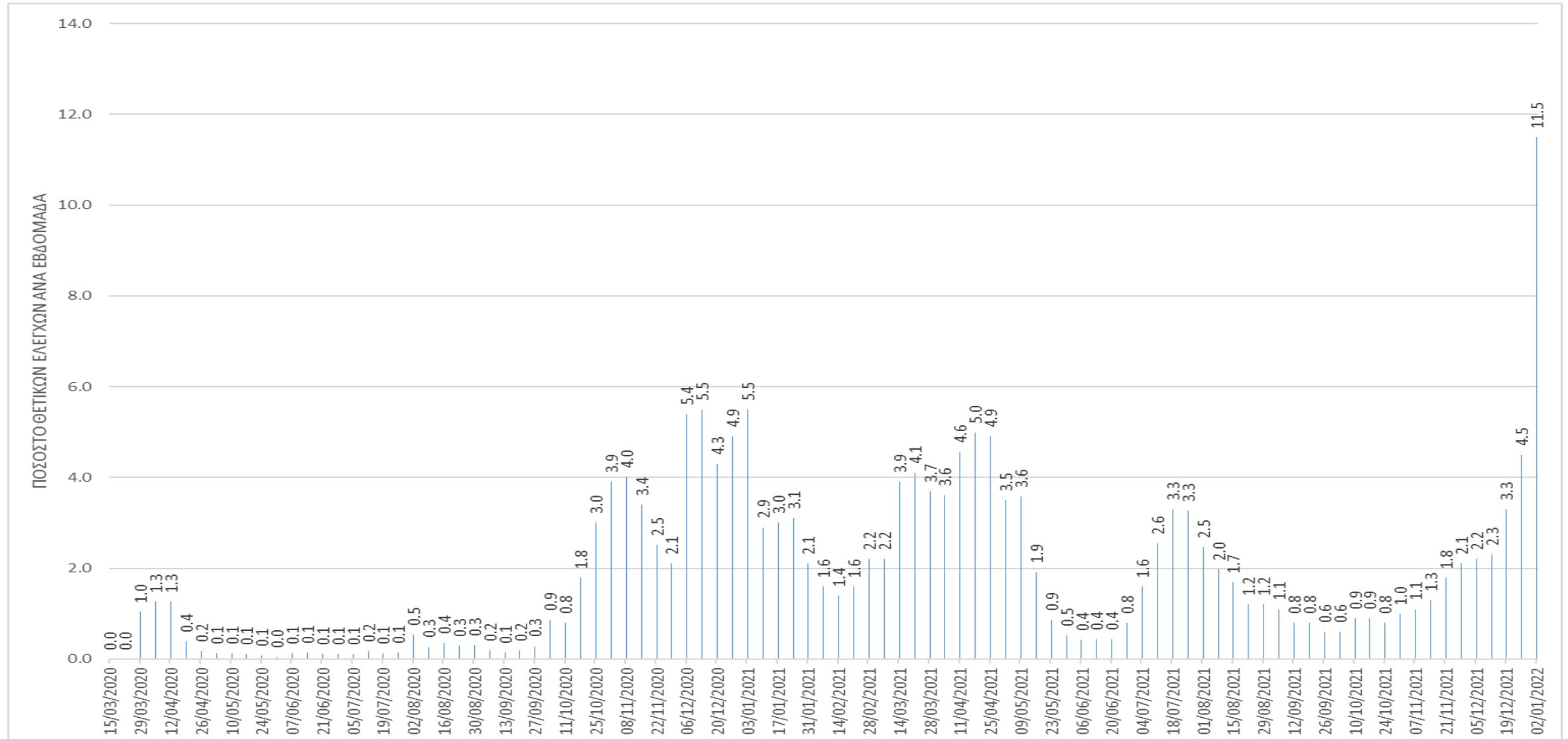
# Molecular tests and antigen rapid tests

	<b>Molecular tests (as announced by the Ministry of Health)</b>	<b>Antigen rapid tests</b>
<b>Total overall</b>	2,831,330	17,093,016
<b>Tests/100.000</b>	318,843.5	1,924,889.2
<b>Total (Last 14 days)</b>	165,680	1,280,012
<b>Last 14 days/100.000</b>	18,657.7	144,145.5

# Percentage of laboratory tests (molecular) with a positive result (all labs), per week



# Percentage of laboratory tests (molecular) with a positive result (private sector), per week



# Laboratory tests for SARS-CoV-2

- Epidemiological Surveillance Unit, Ministry of Health
- Contributors: Christiana Dimitriou, Anna Demetriou, Maria Prokopiou, Christos Charalambous, Eleni Anastasiou, Carolina Stylianou, Ourania Kolokotroni, Annalisa Quattrocchi, Ioanna Gregoriou, Olga Kalakouta, Georgios Nikolopoulos

# **Epidemiological Surveillance Unit of the Ministry of Health, Republic of Cyprus**

- Contributors: Annalisa Quattrocchi, Ioannis Mamais, Valentinos Silvestros, Anna Demetriou (Health Monitoring Unit), Maria Athanasiadou (Health Monitoring Unit), Theopisti Kyprianou (Health Monitoring Unit), Androulla Stylianou, Sotiroula Sotiriou, Fani Theofhanous, Christos Charalambous, Ioanna Gregoriou, Maria Koliou, Olga Kalakouta, Georgios Nikolopoulos
- Scientific Committee: Constantinos Constantinou, Niki Paphitou, Georgios Nikolopoulos, Maria Koliou, George Panos, Eirini Christaki, Zoi - Dorothea Pana, Constantinos Tsioutis, Linos Hadjihannas, Christos Petrou, Peter Karayiannis, George Petrikkos, Petros Agathangelou, Constantinos Phellas, George Mixides