

Coronavirus Disease 2019 (COVID-19) in the Republic of Cyprus

Surveillance Report as of 28/02/2022

Nicosia 04/03/2022

Data in brief

Laboratory-confirmed cases

321,419

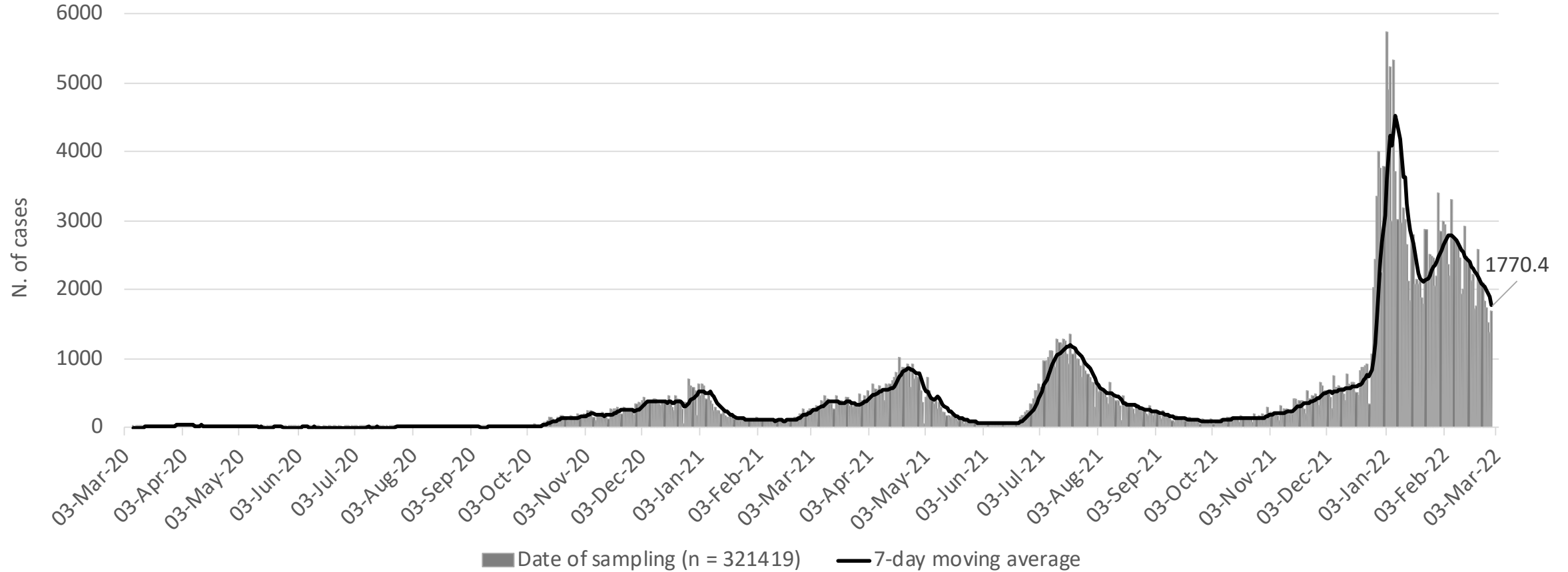
Deaths (%)
Mortality due to COVID-19

863 (0.3%)
97.2/100,000

Hospital care

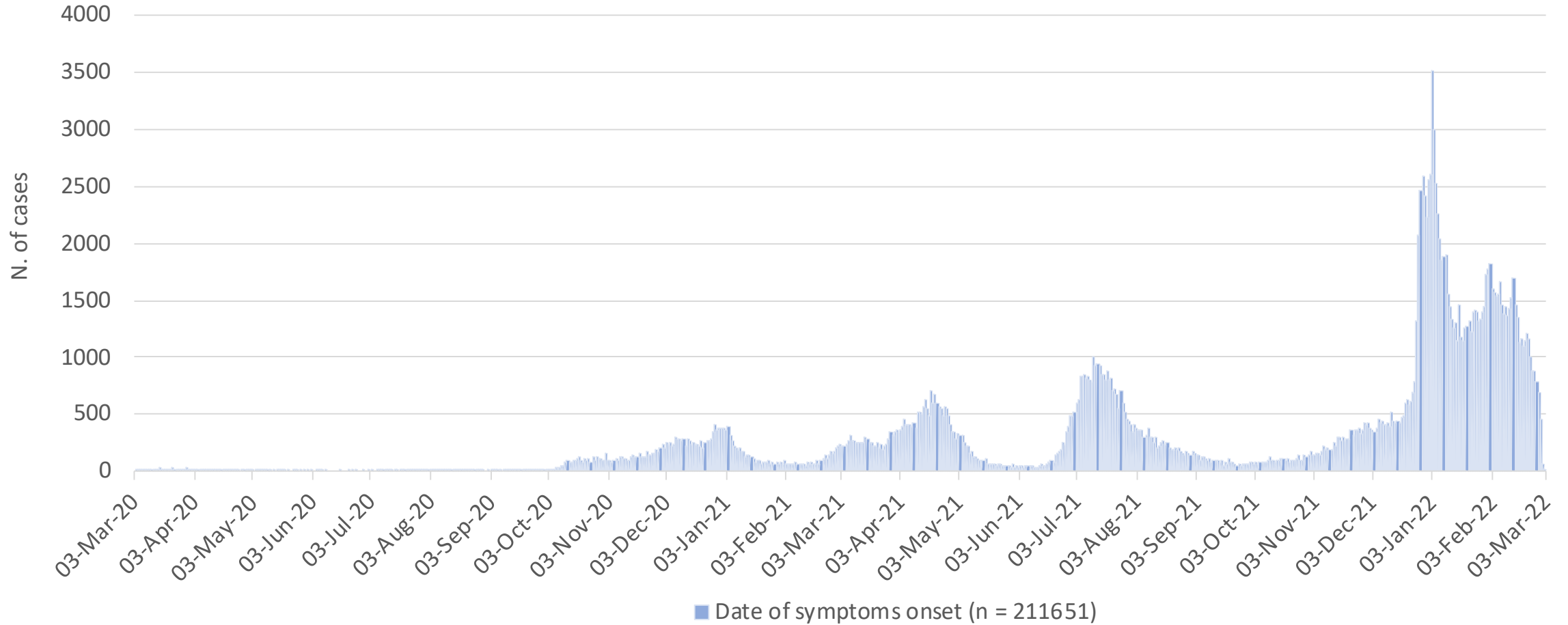
7,881 (2.5%)

Laboratory-confirmed cases by date of sampling

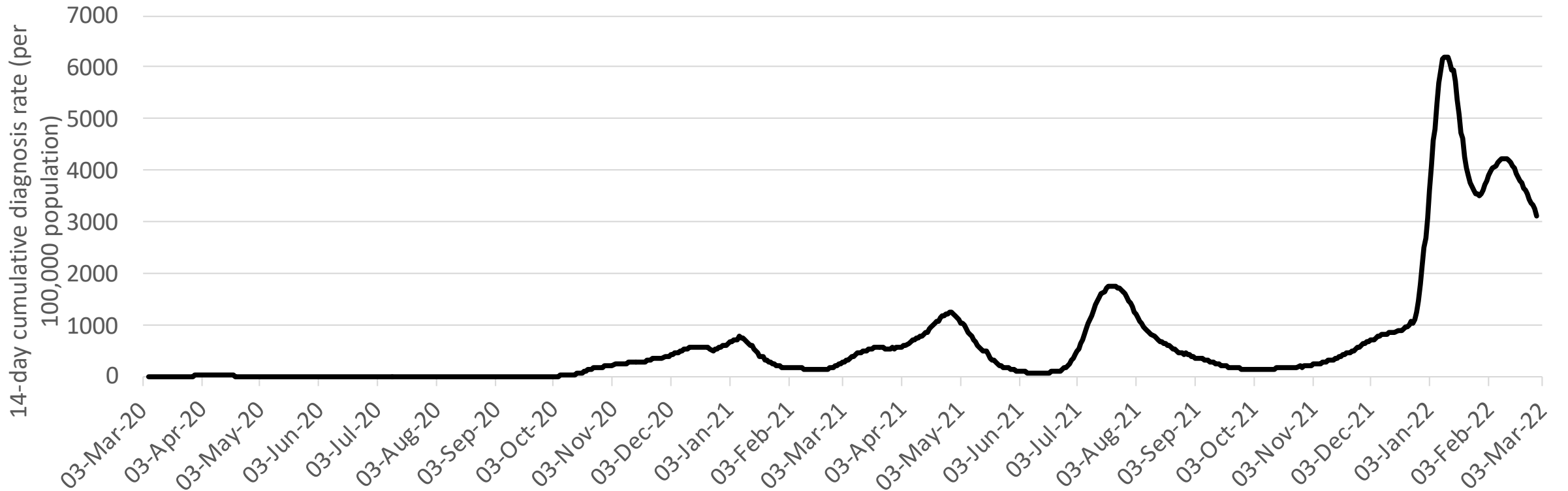


7-day moving average on February 28th is shown on the graph

Laboratory-confirmed cases by date of symptom onset



COVID-19 14-day cumulative diagnosis rate per 100,000 population (proxy of COVID-19 prevalence)



Data in brief

(Last 14 days; 15 – 28 February 2022)

Laboratory-confirmed cases	Locally-acquired (%)
27,674	26,734 (97.5%)+

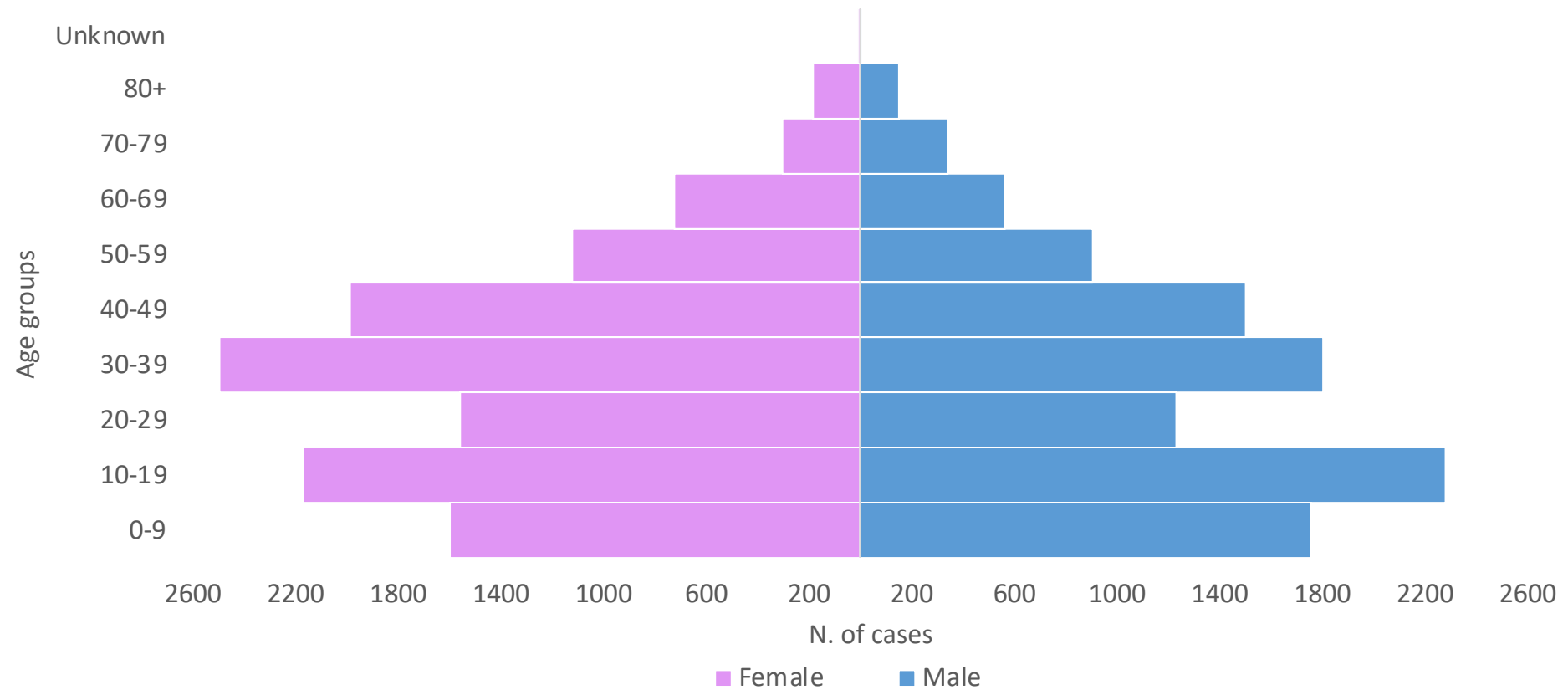
+Information was available for 27,414 cases

Currently in Intensive Care Unit*
13

**Date of discharge/transfer/death included*

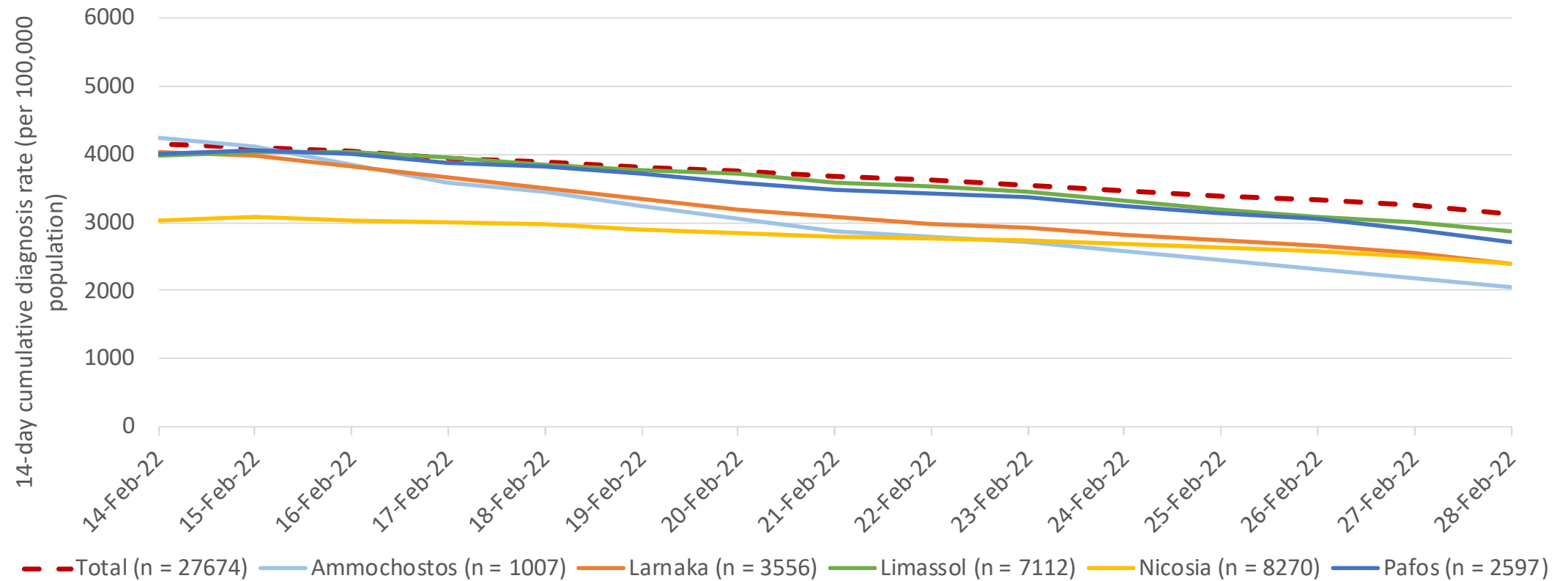
These cases have not tested yet negative for SARS-CoV-2 or they are still considered infectious

Distribution of cases diagnosed in the last 14 days by sex and age group



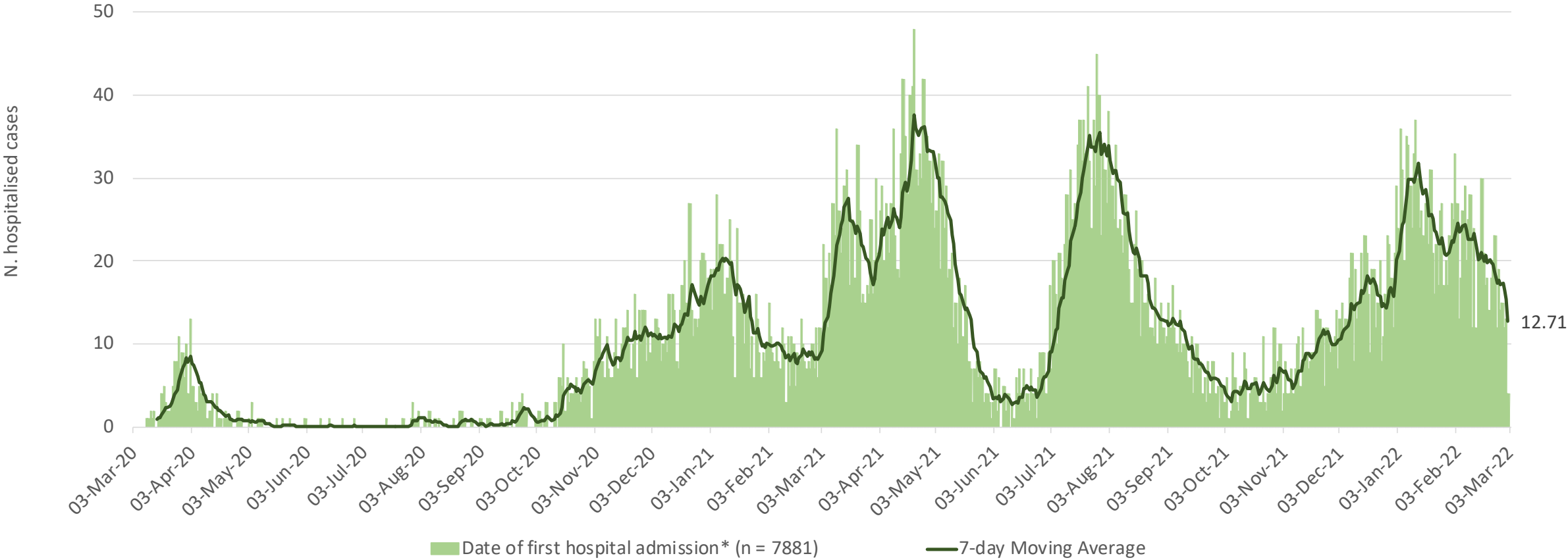
Median age: 31 years (interquartile range: 14-46 years)

COVID-19 14-day cumulative diagnosis rate per 100,000 population, overall and by district for the last 14 days



3116.4	2059.3	2386.6	2864.3	2387.4	2722.2
February 28 th , 2022					

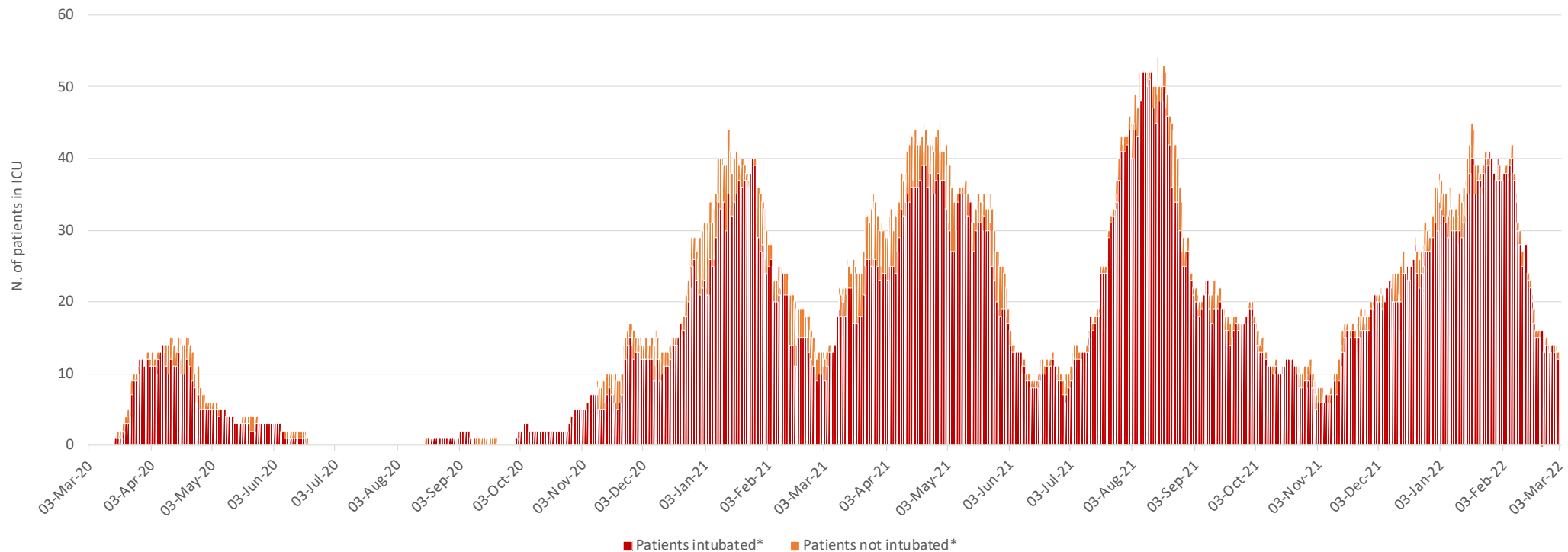
Number of cases by date of hospital admission



7 day moving average on March 2nd is shown on the graph

Cases in intensive care units (ICU)*

- Total: 844 (10.7% of all ever hospitalized patients) have ever been admitted to ICU – 13 (diagnosis till February 28th, without a negative test for SARS-CoV-2 test after diagnosis or still considered infectious - currently in ICU as of March 2nd)

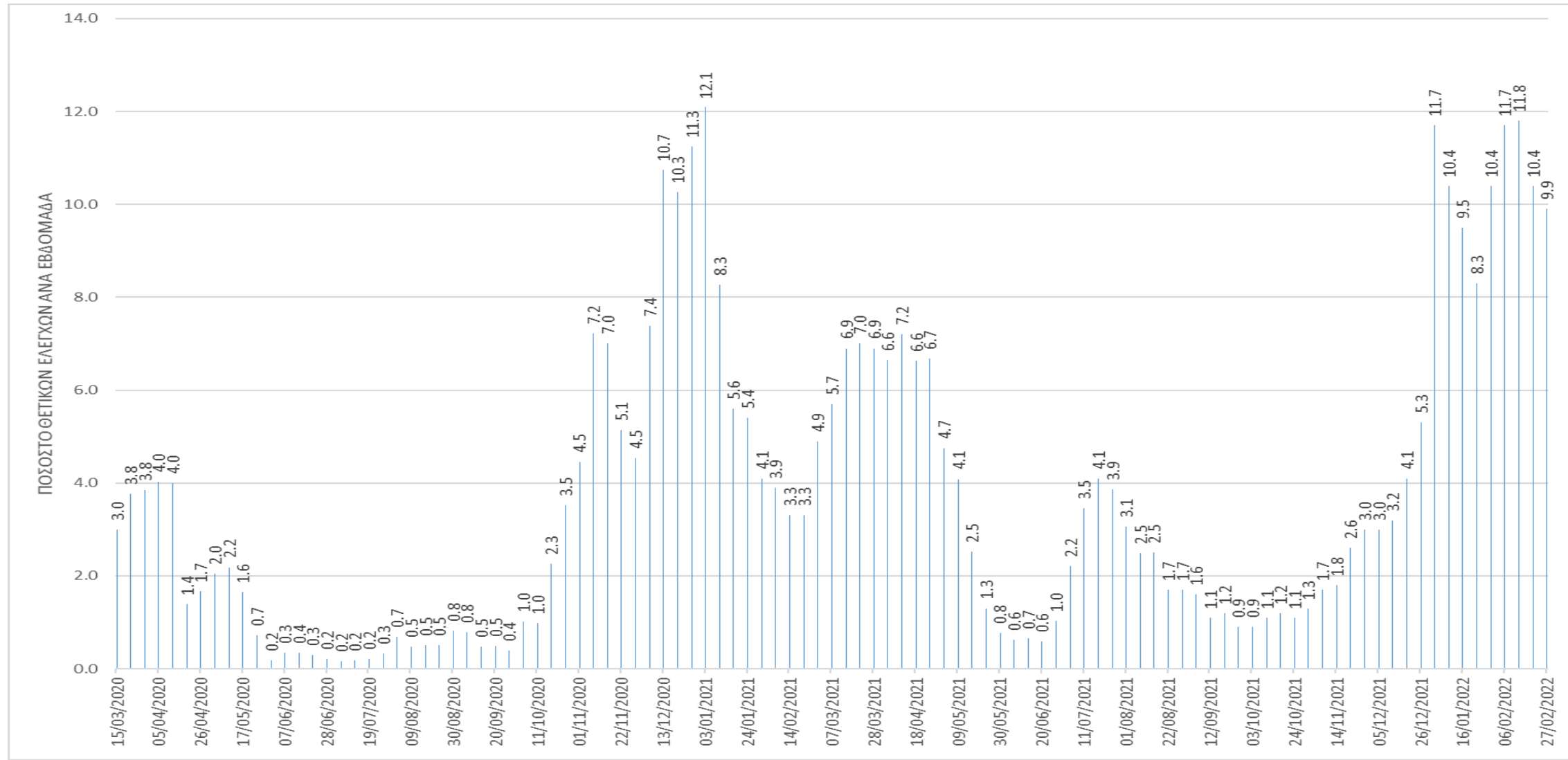


*Intensive care unit (ICU) refers only to the ICU in Limassol General Hospital and ICU in Nicosia General Hospital
Date of discharge/transfer/death included

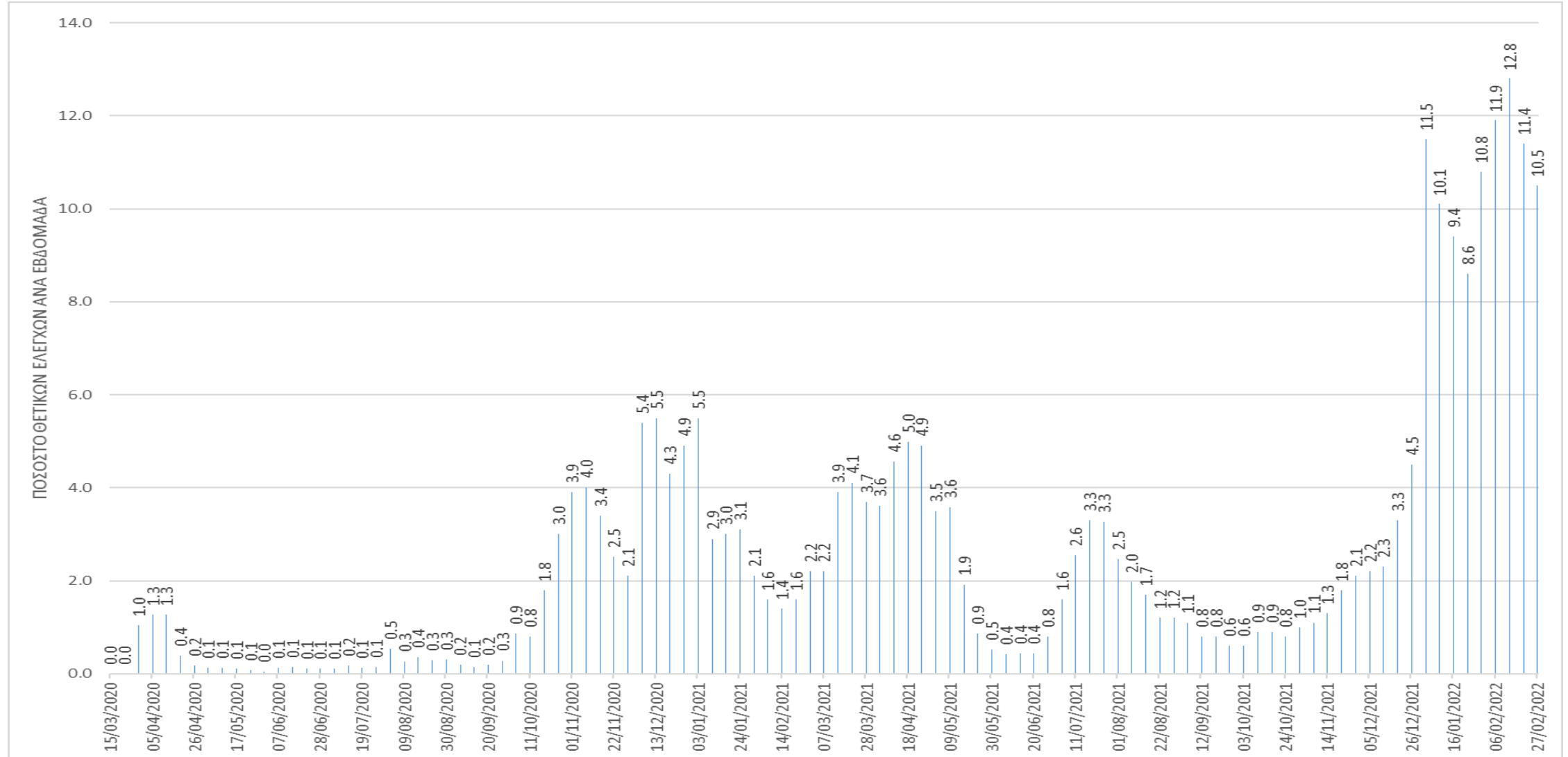
Molecular tests and antigen rapid tests

	Molecular tests (as announced by the Ministry of Health)	Antigen rapid tests
Total overall	3,248,988	22,780,983
Tests/100.000	365,877	2,565,426
Total (Last 14 days)	94,921	1,347,575
Last 14 days/100.000	10,689.3	151,753.9

Percentage of laboratory tests (molecular) with a positive result (all labs), per week



Percentage of laboratory tests (molecular) with a positive result (private sector), per week



Laboratory tests for SARS-CoV-2

- Epidemiological Surveillance Unit, Ministry of Health
- Contributors: Christiana Dimitriou, Anna Demetriou, Maria Prokopiou, Christos Charalambous, Eleni Anastasiou, Carolina Stylianou, Ourania Kolokotroni, Annalisa Quattrocchi, Ioanna Gregoriou, Olga Kalakouta, Georgios Nikolopoulos

Epidemiological Surveillance Unit of the Ministry of Health, Republic of Cyprus

- Contributors: Annalisa Quattrocchi, Ioannis Mamais, Valentinos Silvestros, Anna Demetriou (Health Monitoring Unit), Maria Athanasiadou (Health Monitoring Unit), Theopisti Kyprianou (Health Monitoring Unit), Androulla Stylianou, Sotiroula Sotiriou, Fani Theofhanous, Christos Charalambous, Ioanna Gregoriou, Maria Koliou, Olga Kalakouta, Georgios Nikolopoulos
- Scientific Committee: Constantinos Constantinou, Niki Paphitou, Georgios Nikolopoulos, Maria Koliou, George Panos, Eirini Christaki, Zoi - Dorothea Pana, Constantinos Tsioutis, Linos Hadjihannas, Christos Petrou, Michael Voniatis, Peter Karayiannis, George Petrikkos, Petros Agathangelou, Constantinos Phellas, George Mixides