



Coronavirus Disease 2019 (COVID-19)

National Surveillance Report as of 20/10/2020

Date of publication: 22/10/2020

Produced by the Epidemiological Surveillance Unit of the Ministry of Health

Contributors: Annalisa Quattrocchi, Ioannis Mamais, Valentinos Silvestros, Anna Demetriou (Health Monitoring Unit), Maria Athanasiadou (Health Monitoring Unit), Theopisti Kyprianou (Health Monitoring Unit), Androulla Stylianou, Sotiroula Sotiriou, Fani Theofhanous, Christos Charalambous, Ioanna Gregoriou, Maria Koliou, Georgios Nikolopoulos and Elisavet Constantinou

Scientific Committee: Elisavet Constantinou, Constantinos Constantinou, Niki Paphitou, Georgios Nikolopoulos, Maria Koliou, George Panos, Eirini Christaki, Zoi – Dorothea Pana, Constantinos Tsioutis, Leondios Kostrikis, Peter Karayiannis, George Petrikkos, Petros Agathangelou, George Mixides

Suggested citation: Epidemiological Surveillance Unit of the Ministry of Health, Cyprus. National Situation Report. Coronavirus Disease 2019 (COVID-19), 22 October 2020.



Summary

- As of October 20th, a total of 2,704 COVID-19 cases and 32 deaths (case fatality rate: 1.2%) have been reported in the Republic of Cyprus.
- Among these cases, 8.6% are health-care workers (n = 232) - 1.7% physicians (n = 46), 4.5% nurses (n = 121), 0.4% other health occupations (n = 10), and 2% auxiliary staff (n = 55).
- The median age of cases is 35 years (Interquartile range - IQR: 25-52 years); 52.8% are male and 47.2% are female.
- Overall, of 2,448 cases for which the place of exposure was known, locally acquired infections (index cases and close-contacts of confirmed cases) were 1,882 (76.9%).
- In the last 14 days (07-20 October), of 805 cases sampled and notified, 10.8% (n = 87) were imported, 82.1% (n = 661) were locally-acquired, and 7.1% (n = 57) are unknown
- In total, 9.9% (n = 268) of cases received hospital care, and 24 (9%) were still hospitalised (either for treatment of COVID-19 symptoms or for pre-existing conditions, although recovered from COVID-19). The median age of hospitalized patients was 60 years (IQR: 47-72 years) and 61.2% are males.
- There were two patients in intensive care unit and both intubated (as of October 20th, including deaths/discharged on that day).
- Among cases alive, 1,581 (59.2%) cases have recovered (without symptoms and with two negative tests following their diagnosis or released 21 days after diagnosis).
- A total of 444,911 tests have been performed as of October 20th (50,794.7 per 100,000 population).



Epidemiological surveillance in the Republic of Cyprus

Analyses are based on laboratory-confirmed cases notified to the Epidemiological Surveillance Unit of the Ministry of Health.

As of October 20th, 2,704 laboratory-confirmed cases of coronavirus disease 2019 (COVID-19) have been reported (Figure 1a and 1b and 2).

The median time between symptoms onset and date of sampling was 2 days (Interquartile range - IQR: 1-5 days). It should be noted that for 77 cases the date of sample collection was before the onset of symptoms because of immediate testing of contacts of possible and laboratory-confirmed cases.

As of October 20th, the 14-day cumulative notification rate of COVID-19 (per 100,000 population), a measure which reflects the number of active COVID-19 cases in the population (prevalence)¹, is 95.9 per 100,000 population (Figure 3).

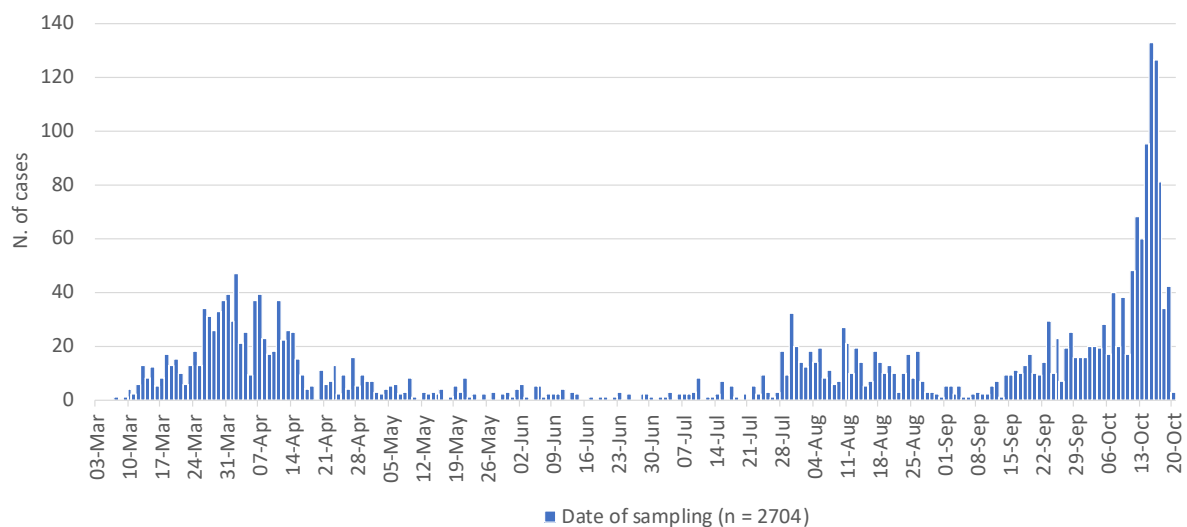


Figure 1a: Number of laboratory-confirmed COVID-19 cases in Cyprus since 03/03/2020 by date of sample collection (n = 2,704).

¹Coronavirus disease 2019 (COVID-19) pandemic: increased transmission in the EU/EEA and the UK – seventh update, 25 March 2020. Stockholm: ECDC; 2020. <https://www.ecdc.europa.eu/sites/default/files/documents/RRA-seventh-update-Outbreak-of-coronavirus-disease-COVID-19.pdf>

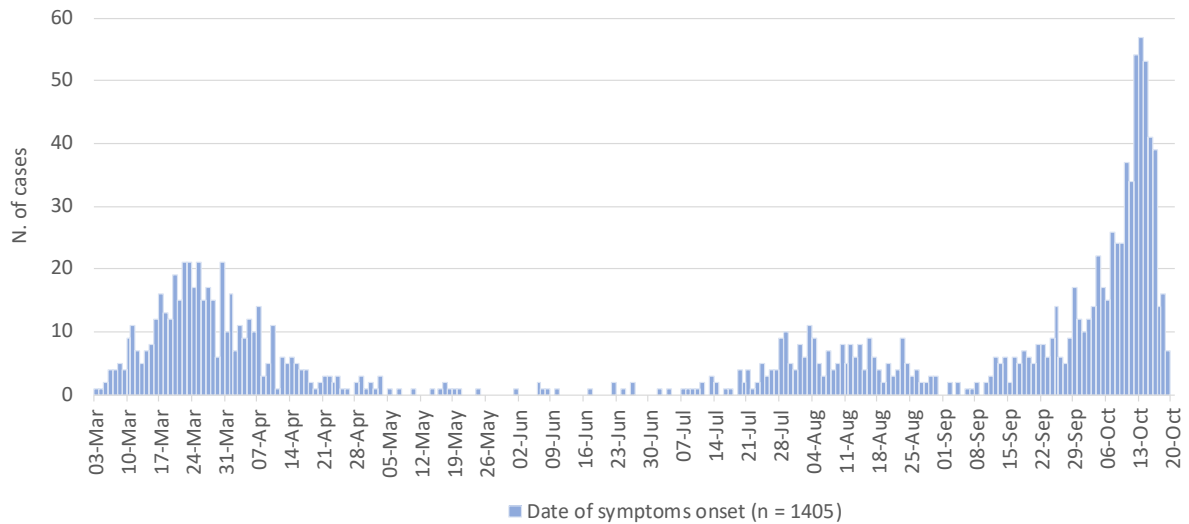


Figure 1b: Number of laboratory-confirmed COVID-19 cases in Cyprus since 03/03/2020 by date of symptoms onset (n = 1,405).

Recent data should be interpreted with caution due to the possibility that cases with date of onset within the reporting period have not yet been diagnosed.

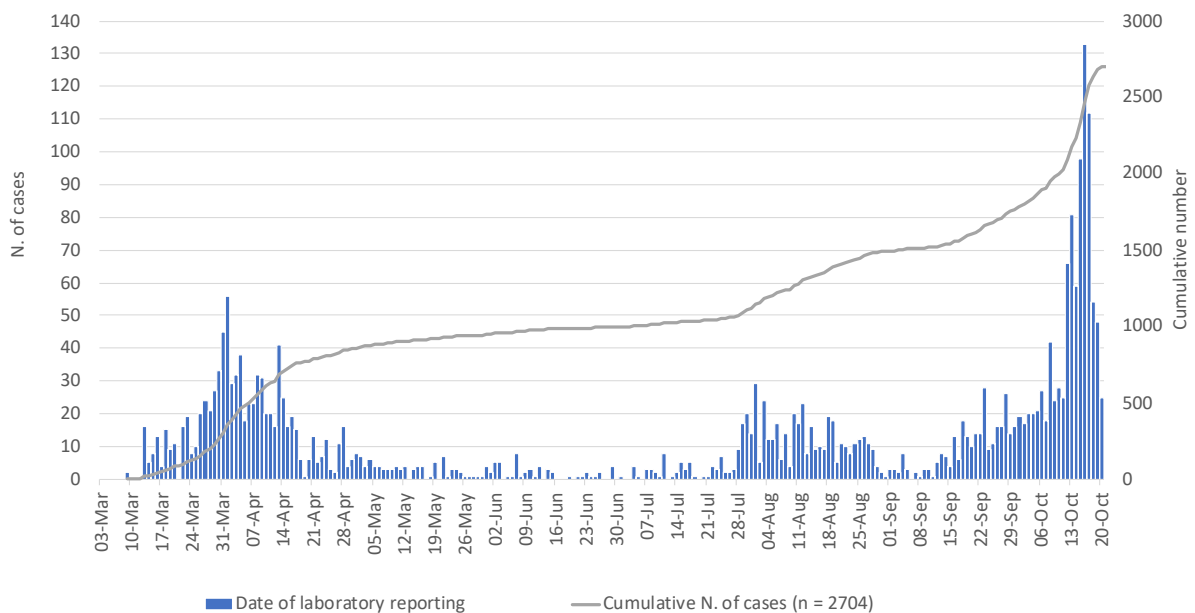


Figure 2: Number and cumulative number of laboratory-confirmed COVID-19 cases in Cyprus since 03/03/2020, by date of laboratory reporting (n = 2,704).

Recent data should be interpreted with caution due to the possibility that cases with date of onset within the reporting period have not yet been diagnosed.

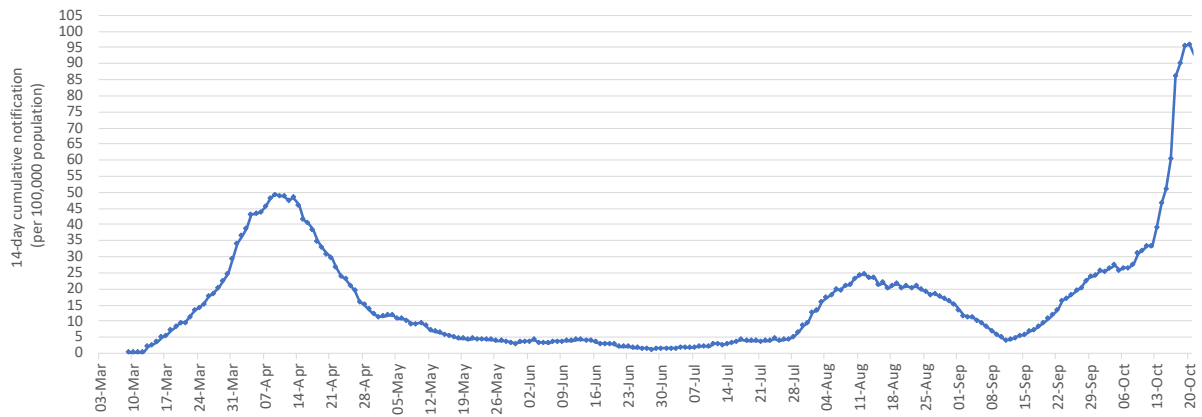


Figure 3: COVID-19 14-day cumulative notification rate per 100,000 population (proxy of COVID-19 prevalence).

March 23rd represents the first 14th day since cases have been reported.



Characteristics of the cases

Among these cases, 52.3% are male (n = 1,413) and 47.7% female (n = 1,290), for one case sex is missing.

By age group, cases included 220 infants, children and adolescents aged 0-17 years-old (8.1%), 2,079 adults aged 18-59 years (76.9%), 400 persons aged 60 years and older (14.8%), and for five cases information was missing. Figure 4 shows the number of cases by sex and by 10-year age band. The median age of all cases is 35 years (IQR: 25-52 years).

The median age among adult cases (≥ 18 years) is 37 years (IQR: 28-53 years).

The proportion of cases by week of reporting and by age groups is shown in figure A1 in Appendix. The 14-day cumulative incidence rate (per 100,000 population) by age groups is shown in figure A2 in Appendix.

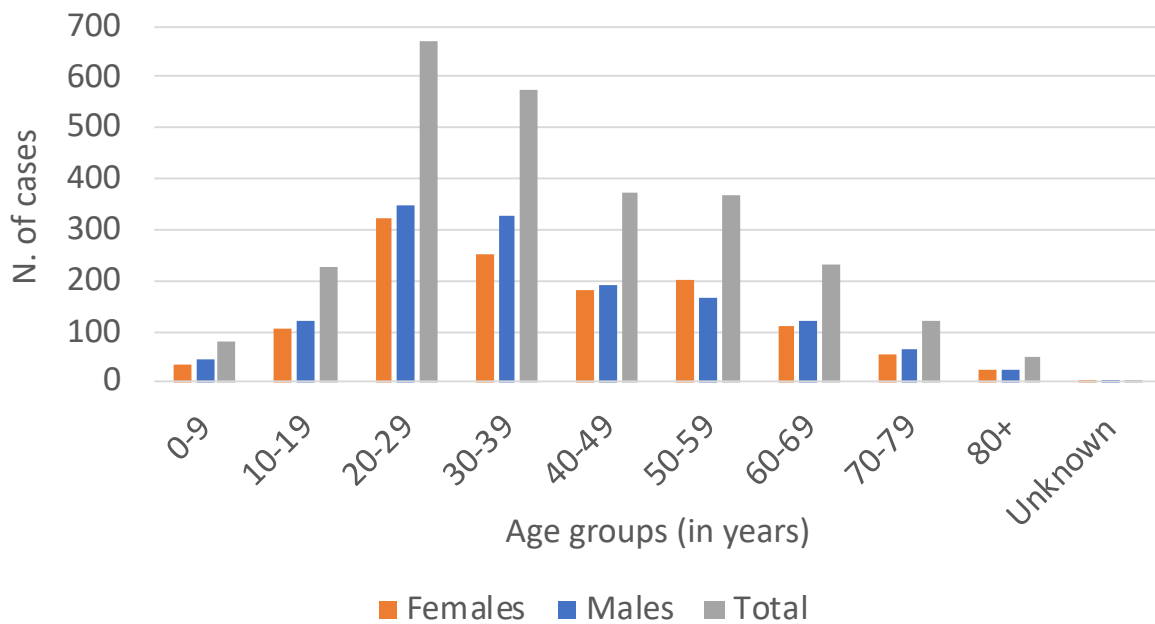


Figure 4: Laboratory-confirmed COVID-19 cases in Cyprus by sex and age groups.

Among all cases, 784 (29%) were reported in Limassol district, 654 (24.2%) in Nicosia, 629 (23.3%) in Larnaka, 309 (11.4%) in Pafos, 147 (5.4%) in Ammochostos, and 181 (6.7%) were reported either in the British bases or had a residence abroad, or information was not available. Figure A3 in appendix shows the 14-day cumulative incidence rate (per 100,000 population) by district.

Figure A4 in appendix shows the distribution of cases by postal code.



Among the 2,704 cases, 8.6% are health-care workers² (n = 232) - 1.7% physicians (n = 46), 4.5% nurses (n = 121), 0.4% other health occupations (n = 10), and 2% auxiliary staff (n = 55). Table 1 shows the distribution of health-care workers by district of residence.

Table 1: Health-care workers by district of residence (n=232).

District	Health-care worker	Physicians	Nurses	Other health occupations	Auxiliary staff
Ammochostos	17	3	8	0	6
Larnaka	50	8	29	2	11
Limassol	36	4	20	2	10
Nicosia	61	13	27	4	17
Pafos	68	18	37	2	11
Total	232	46	121	10	55

Epidemiological link

As of October 20th, place of exposure is available for 2,448 cases (90.5%). In total, 23.1% (n = 566) of laboratory-confirmed COVID-19-cases had history of travel or residence abroad during the 14 days prior to symptom onset (imported). Locally-acquired infections (index cases and close-contacts of confirmed cases) occurred in 76.9% (n = 1,882 of 2,448 with known place of exposure).

In the last 14 days (07-20 October), of 805 cases sampled and notified, 10.8% (n = 87) were imported, 82.1% (n = 661) were locally-acquired, and 7.1% (n = 57) are unknown. Table A1 and Figure A5 in Appendix show the characteristics of cases by origin of infection and the number of cases by origin of infection in the recent period, respectively.

The majority of recent cases were reported in Limassol (55.3%; n = 445), where 87.4% of them (n = 389) were locally-acquired.

² The term “health-care worker” is based on the occupation and not on the place of exposure. Health-care workers are defined as all health care professionals, allied health workers, and auxiliary health workers.



Clinical features

Of the 2,704 laboratory-confirmed COVID-19-cases, clinical information is available for 97.4% (n = 2,633), of which 37.1% (n = 977) reported no symptoms at diagnosis and 62.9% (n = 1,656) reported at least one symptom.

The most commonly reported symptoms among symptomatic cases were:

- cough (640/1,633; 39.2%),
- fever (734/1,635; 44.9%),
- myalgia (560/1,628; 34.4%),
- sore throat (437/1,630; 26.8%),
- anosmia (299/1,539; 19.4%), and
- shortness of breath (173/1,609; 10.8%).

Other reported symptoms were diarrhoea, runny nose, and headache.

Table A3 in appendix reports the sex and age distribution of asymptomatic cases at diagnosis.

Pre-existing conditions

Information on comorbidities was available for 2,523 (93.3%) cases. Of these, 732 (27.1%) reported at least one comorbidity.

The most commonly reported comorbidities among all cases were:

- hypertension (231/2,372; 9.7%),
- diabetes (130/2,838; 5.5%),
- heart disease (128/2,382; 5.4%),
- chronic respiratory disease (66/2,302; 2.9%), and
- immunosuppression (39/2,552; 1.6%).

Other reported comorbidities were cancer, chronic kidney disease, and autoimmune disease.



Deaths

As of October 20th, 32 deaths were reported in Cyprus (Case Fatality Rate - CFR: 1.2%).

The mortality rate for COVID-19 is 3.7 per 100,000 population.

Twenty-three deaths (71.9%) occurred in men and nine (28.1%) in women; the median age of all deaths was 76 years (IQR: 67-79 years). Twelve deaths were reported among residents in Larnaka, eight in Pafos, five in Nicosia, four in Limassol, and three in Ammochostos (Appendix Table A4).

The median time from date of sampling to death was 11.5 days (IQR: 5-29.5 days). Figure A6 shows the Kaplan-Meier curve of the time from date of sampling to death.

For 25 deaths, COVID-19 was the underlying cause of death (COVID-19 CFR: 0.9%). Figure 5 reports the number of deaths by date.

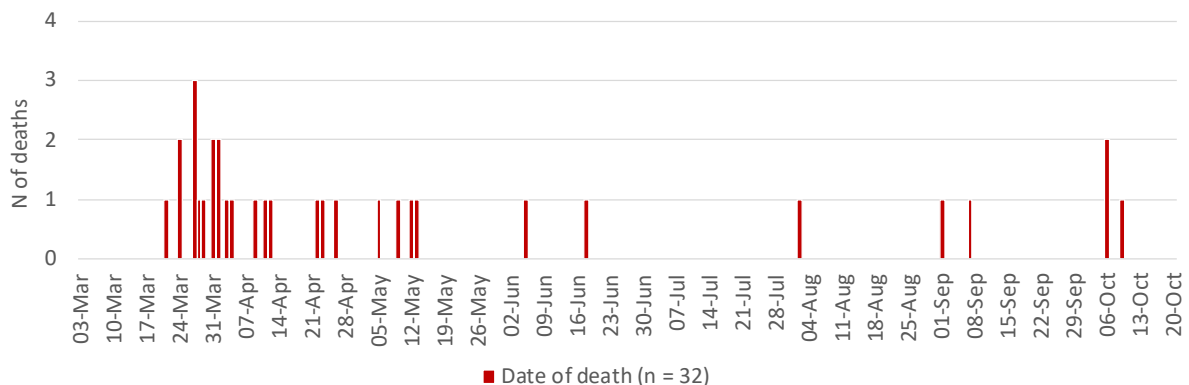


Figure 5: Number of deaths among COVID-19 cases in Cyprus by date of death (n = 31).

Figure A7 in Appendix shows the number of deaths (for all causes), per week (until week 36) and year (2017-2020) in the Republic of Cyprus.



Hospitalization and intensive care unit (ICU) admissions³

In total, 9.9% (n = 268) of people with COVID-19 received hospital care, and 24 (9%) were still hospitalised, as of October 20th (either for treatment of COVID-19 symptoms or for pre-existing conditions, although recovered from COVID-19). The median age of hospitalized patients was 60 years (IQR: 47-72 years). Hospitalized cases were mainly males (n = 164; 61.2%).

Among symptomatic cases, 13.7% (n = 226) required hospitalization.

For cases hospitalised after symptoms onset (n = 166), the median time from symptom onset to hospital admission was 6.5 days (IQR: 3.5-9.5 days).

Figure 6a shows the total number of first hospital admissions by date.

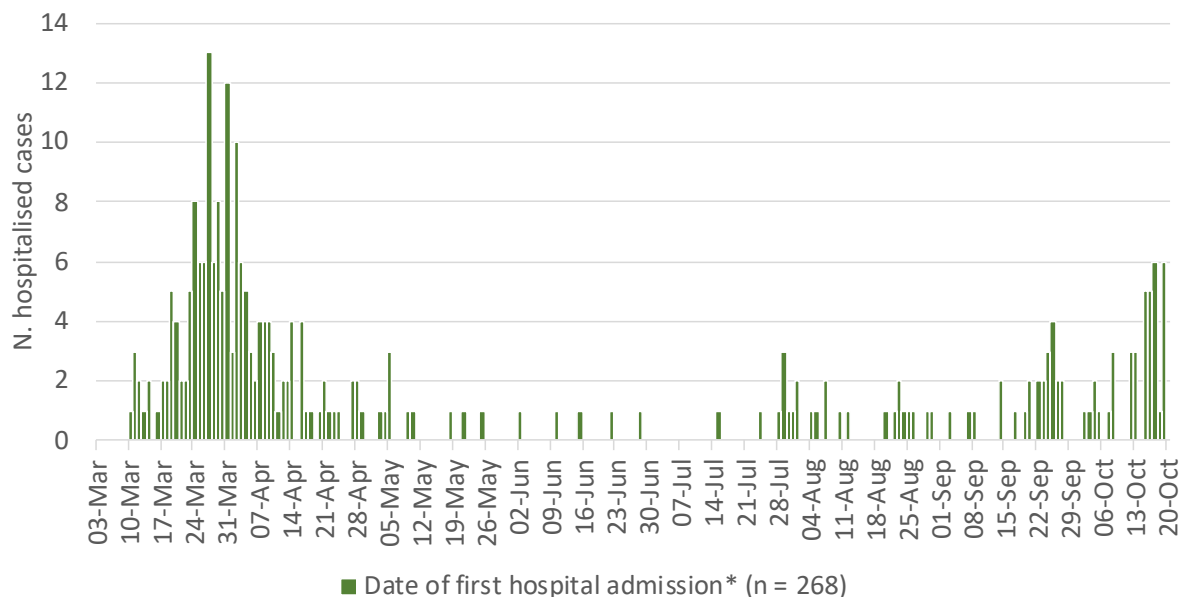


Figure 6a: Number of laboratory-confirmed COVID-19 cases by date of first hospital admission (n = 268).

**Date of hospital admission was replaced with date of sampling for inpatients hospitalised prior to the beginning of the epidemic.*

³ Data on hospitalisation and ICU are provisional and should be interpreted with caution because delay in data reporting is likely; for the construction of the curve, people are no longer in an ICU/hospital the day next to the date of their discharge, death or transfer.

⁴ Intensive care unit (ICU) refers only to the ICU in Limassol General Hospital and to the ICU in Nicosia General Hospital.



Table B1 in Appendix and figure 6b report the number of individuals in hospital every day (excluding those in ICU).

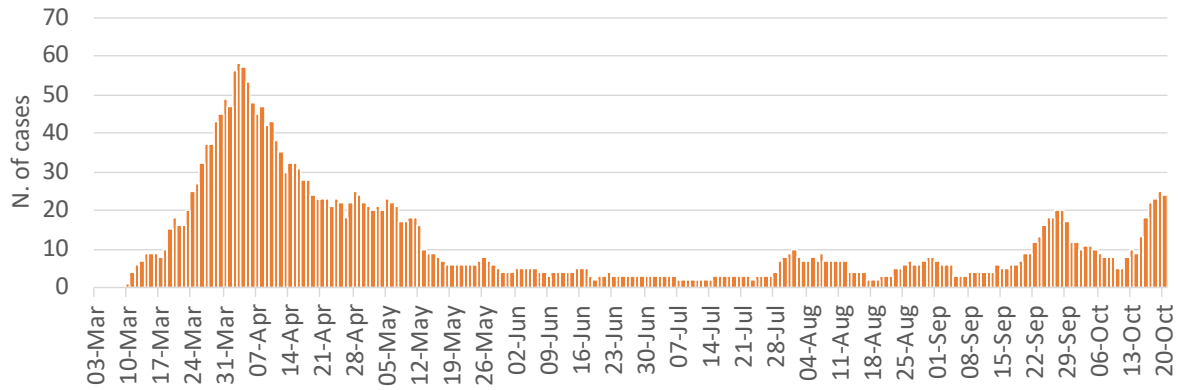


Figure 6b: Number of laboratory-confirmed COVID-19 cases in hospital every day (excluding those in ICU).



Overall, 36 cases (13.4% of all hospitalized patients) have been admitted to ICU⁴, and two cases were still in ICU (as of October 20th, including deaths/ discharged on that day).

The median age of patients ever admitted to ICU was 65.5 years (IQR: 57-75 years). ICU patients are mainly male (n = 27; 75%).

The characteristics of patients ever admitted to ICU and either discharged alive or dead in ICU are reported in Table A5 in Appendix.

The number of cases currently in ICU is 0.2 per 100,000 population (as of October 20th, including deaths/discharged on that day).

The overall median length of stay in ICU (for all 36 ICU cases) was 13.5 days (IQR: 8-29 days). Figure A8 shows the Kaplan-Meier curve of the length of stay in ICU.

For patients who died while in ICU (n = 20), the median length of stay in ICU was 13.5 days (IQR: 7.5-27.5).

Figure A9 shows the Kaplan-Meier curve of the length of stay in ICU for the people who died.

For patients transferred/discharged alive from ICU (n = 14), the median length of stay in ICU was 10.5 days (IQR: 8-30 days).

The median time from last ICU discharge to hospital discharge for those ever admitted to ICU and discharged alive from hospital (n = 13) was 9 days (IQR: 5-13 days).

For cases admitted in ICU after symptoms onset (n = 23), the median time from symptom onset to ICU admission was 9 days (IQR: 7-16 days).

The median time from symptom onset to hospital admission for patients who were then admitted to ICU (n = 20) was 5.5 days (IQR: 3.5-10 days).

For these patients the median time from hospital admission to ICU admission was 3.5 days (IQR: 1.5-4.5 days).

A total of 31 ICU patients (86.1% of all ICU patients) have been intubated - currently there are two patients intubated (as of October 20th, including deaths/discharged on that day).

Figure 7 shows the number of patients in ICU, by day and intubation status.

Table B1 in the appendix shows also the number of patients in ICU every day as well as the number of ICU admissions by date.

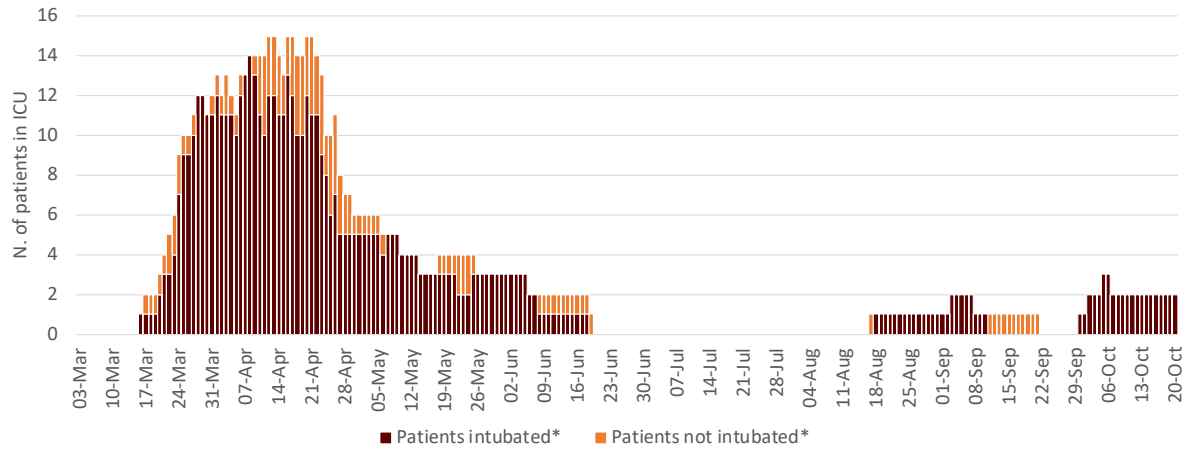


Figure 7: Number of laboratory-confirmed COVID-19 cases in ICU by date and intubation.

**Date of discharge/transfer/death included*

Recovered/released

As of October 20th, among cases alive, 59.2% (n = 1,581) of COVID-19 cases have recovered⁵; of which 1,090 (68.9%) tested negative two consecutive times, and 491 (31.1%) have been released as per the new guidelines⁶. The median time between the second negative result and the first date of sampling was 21 days (IQR: 18-33 days).

Table 2 shows the number and percentage of recovered cases and their characteristics.

Table 2: Characteristics of all cases and cases recovered/released (n = 1,581)

Characteristics	Total cases N	Recovered			
		Two consecutive negative tests		Released after 21 days	
		N	%	N	%
Total	2,704	1,090	40.3	491	18.2
Sex					
Male	1,413	555	39.3	269	19.0
Female	1,290	535	41.5	222	17.2
Unknown	1	0	0.0	0	0.0
Age groups (years)					
0-9	82	26	31.7	15	18.3
10-19	227	78	34.4	52	22.9
20-29	669	203	30.3	150	22.4
30-39	577	223	38.7	84	14.6
40-49	374	171	45.7	69	18.5
50-59	370	191	51.6	54	14.6
60-69	230	110	47.8	37	16.1
70-79	121	67	55.4	25	20.7
80+	49	21	42.9	4	8.2
Unknown	5	0	0.0	1	20.0
Median age in years (IQR*)	35 (25-52)	40 (28-56)		33 (24-49)	

⁵ For symptomatic cases, or for cases hospitalised, a COVID-19 case can be considered cured after the resolution of symptoms and two negative tests for SARS-CoV-2 at 24-hour interval at least. For asymptomatic cases, or for persons isolated at home, the negative tests to document virus clearance should be obtained at a minimum of 14 days after the initial positive test (end of the quarantine period).

Novel coronavirus (SARS-CoV-2). Discharge criteria for confirmed COVID-19 cases- When is it safe to discharge COVID-19 cases from the hospital or end home isolation? - Technical Report, 10 March 2020. Stockholm: ECDC; 2020.

⁶ A person is released 21 days after the initial diagnosis, if he/she has a positive test 14 days after the initial diagnosis and remains in isolation for one more week without being further tested.



Comparison with selected countries

As of October 20th, in Cyprus the reporting rate was 308.7 cases per 100,000 population, the mortality rate was 3.7 deaths per 100,000 population, and the CFR was 1.2%.

Table 3 shows COVID-19 indicators for Cyprus and other selected countries.

Figure A10 in appendix reports the rates of cumulative tests and cases (per 100,000 population) in Cyprus and other selected countries. In Cyprus the testing rate is 50,794.7 per 100,000 population.

It should be noted that the number of cases, tests and deaths for Cyprus are aggregated and include people from abroad and the British bases, while the total population does not include inhabitants from abroad or from the British bases.



Table 3: COVID-19 indicators by selected Countries, as of 20/10/2020

Country	N. of cases [†]	N. of cases (per 100,000 pop)	N. of tests [§]	N. of tests (per 100,000 pop)	N. of deaths [†]	CFR [°] (%)	Mortality rate (per 100,000 pop)	Pop. (in thousand) [†]
Cyprus	2,704	308.7	444,911	50,794.7	32	1.2	3.7	875.9*
Italy	423,578	701.8	13,784,181	22,836.8	36,616	8.6	60.7	60,359.5
USA	8,214,755	2,496.4	126,033,173	38,300.4	220,133	2.7	66.9	329,064.9
UK	741,212	1,112.1	27,795,752	41,705.9	43,726	5.9	65.6	66,647.1
Greece	25,802	240.6	1,568,798	14,628.0	520	2.0	4.8	10,724.6
Malta	4,737	959.8	300,316	60,847.0	45	0.9	9.1	493.6
Sweden	106,380	1,039.9	1,722,219	16,834.7	5,922	5.6	57.9	10,230.2
Netherlands	235,954	1,365.3	2,670,787	15,454.0	6,759	2.9	39.1	17,282.2
Republic of Korea	25,333	49.5	2,491,311	4,863.4	447	1.8	0.9	51,225.3

[†]Number of cases, number of deaths and population (in thousands) for all countries, but Cyprus, as reported by ECDC at

<https://www.ecdc.europa.eu/en/publications-data/download-todays-data-geographic-distribution-covid-19-cases-worldwide>

[§] Data for Cyprus: internal communication; data for other countries: <https://www.ecdc.europa.eu/en/publications-data/covid-19-testing>, <http://ncov.mohw.go.kr/en/>

[°] CFR: Case fatality ratio.

* Data from Statistical Service of the Republic of Cyprus, 2018 ([Statistical Service of the Republic of Cyprus](#))



Acknowledgments

We thank Antry Constantinou, Christiana Soteriou, Despina Ioannou, Irene Georgiou, Maria Clerides, Tatiana Sofocleous, and Despoina Stylianou from the Ministry of Health, and the companies CELLOCK (<https://cellock.com>) and GEOMATIC (<https://geomatic.com>) for their volunteering support.



Appendix

Table A1: Characteristics of cases by origin of infection, in the last 14 days (date of sample collection: 07-20 October 2020)

Characteristics	Total (n = 805)		Imported (n = 87)		Locally-acquired (n = 661)		Unknown (n = 57)	
	N	%	N	%	N	%	N	%
Sex								
Male	409	50.8	43	49.4	333	50.4	33	57.9
Female	396	49.2	44	50.6	328	49.6	24	42.1
Age groups (years)								
0-9	25	3.1	0	0.0	24	3.6	1	1.8
10-19	71	8.8	9	10.3	57	8.6	5	8.8
20-29	240	29.8	24	27.6	193	29.2	23	40.4
30-39	209	26.0	20	23.0	179	27.1	10	17.5
40-49	93	11.6	12	13.8	73	11.0	8	14.0
50-59	88	10.9	10	11.5	73	11.0	5	8.8
60-69	57	7.1	6	6.9	48	7.3	3	5.3
70-79	8	1.0	5	5.7	3	0.5	0	0.0
80+	11	1.4	1	1.1	10	1.5	0	0.0
Unknown	3	0.4	0	0.0	1	0.2	2	3.5
Median age in years (IQR*)	31 (24-45)		32 (25- 50)		31.5 (24- 45)		29 (23- 41)	
District								
Ammochostos	17	2.1	2	2.3	13	2.0	2	3.5
Larnaka	82	10.2	7	8.0	71	10.7	4	7.0
Limassol	445	55.3	30	34.5	389	58.9	26	45.6
Nicosia	112	13.9	17	19.5	89	13.5	6	10.5
Pafos	95	11.8	8	9.2	81	12.3	6	10.5
Other	54	6.7	23	26.4	18	2.7	13	22.8
Symptoms at diagnosis								
Yes	542	67.3	47	54.0	476	72.0	19	33.3
No	223	27.7	39	44.8	180	27.2	4	7.0
Unknown	40	5.0	1	1.1	5	0.8	34	59.6



Table A2: Sex and age distribution of asymptomatic cases at diagnosis.

Characteristics	All cases (n = 2,704)	Asymptomatic cases (n = 977)	
	N	n	%
Sex			
Male	1413	556	39.3
Female	1290	421	32.6
Age groups (years)			
0-9	82	42	51.2
10-19	227	98	43.2
20-29	669	270	40.4
30-39	577	210	36.4
40-49	374	116	31.0
50-59	370	111	30.0
60-69	230	69	30.0
70-79	121	42	34.7
80+	49	16	32.7
Unknown	5	3	60
Median age in years (IQR*)	35 (25-52)	32 (24-49)	

*IQR: Interquartile Range

Table A3: Characteristics of all deaths (n = 32) and due to COVID-19 (n = 25).

Characteristics	All deaths		COVID-19 deaths	
	N	%	N	%
Male	23	71.9	17	68.0
Female	9	28.1	8	32.0
Age groups (years)				
0-9	0	0.0	0	0.0
10-19	0	0.0	0	0.0
20-29	0	0.0	0	0.0
30-39	0	0.0	0	0.0
40-49	1	3.1	1	4.0
50-59	2	6.3	1	4.0
60-69	9	28.1	8	32.0
70-79	13	40.6	11	44.0
80+	7	21.9	4	16.0
Median age in years (IQR*)	76 (67-79)		76 (65-78)	
District				
Ammochostos	3	9.4	1	4.0
Larnaka	12	37.5	9	36.0
Limassol	4	12.5	4	16.0
Nicosia	5	15.6	5	20.0
Pafos	8	25.0	6	24.0
Comorbidities				
No	3	9.4	2	8.0
Yes	27	84.4	21	84.0
Median age in years (IQR*)	76 (68-80)		76 (68-78)	
Unknown	2	6.3	2	8.0
Diabetes	11	34.4	9	36.0
Median age in years (IQR*)	76 (69-77)		76 (69-77)	
Hypertension	10	31.3	8	32.0
Median age in years (IQR*)	76.5 (72-85)		76.5 (72.5-81.5)	
Heart disease	14	43.8	12	48.0
Median age in years (IQR*)	76 (69-83)		76 (67.5-84)	
Chronic kidney disease	7	21.9	4	16.0



ΥΠΟΥΡΓΕΙΟ ΥΓΕΙΑΣ

Median age in years (IQR*)	77 (69-83)		76.5 (69.5-81)	
Chronic respiratory disease	4	12.5	4	16.0
Median age in years (IQR*)	75 (71-77)		75 (71-77)	
Chronic liver disease	3	9.4	2	8.0
Median age in years (IQR*)	76 (69-79)		77.5 (76-79)	
Immunosuppression	0	0.0	0	0.0
Median age in years (IQR*)				
Cancer	4	12.5	1	4.0
Median age in years (IQR*)	81 (67.5-88)		79	
Autoimmunedisease	0	0.0	0	0.0
Median age in years (IQR*)				

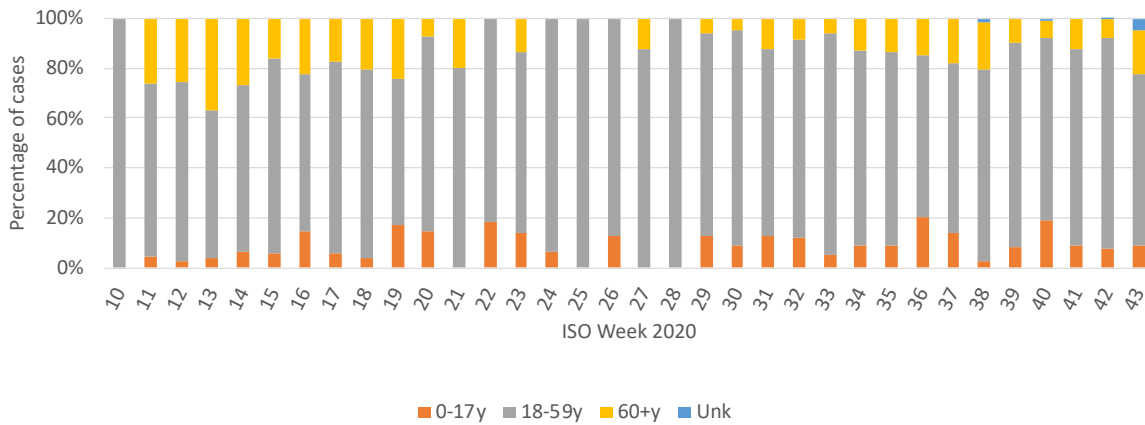
*IQR: Interquartile Range

Table A4: Characteristics of patients ever admitted to ICU, by patient status at ICU discharge.

Characteristics	Total cases		Discharged alive		Deceased in ICU	
	N	%	N	%	N	%
Total	36	100.0	14	38.9	20	55.6
Sex						
Male	27	75.0	10	71.4	15	75.0
Female	9	25.0	4	28.6	5	25.0
Age groups (years)						
0-9	0	0.0	0	0.0	0	0.0
10-19	0	0.0	0	0.0	0	0.0
20-29	1	2.8	1	7.1	0	0.0
30-39	2	5.6	2	14.3	0	0.0
40-49	2	5.6	1	7.1	1	5.0
50-59	7	19.4	5	35.7	2	10.0
60-69	12	33.3	3	21.4	8	40.0
70-79	11	30.6	2	14.3	8	40.0
80+	1	2.8	0	0.0	1	5.0
Median age (IQR)	65.5 (56-75)		57 (47-69)		69 (64-76)	
Symptoms at diagnosis (yes)	32	88.9	13	92.9	18	90.0
Cough	18	50.0	7	50.0	11	55.0
Fever	19	52.8	8	57.1	10	50.0
Myalgia	5	13.9	2	14.3	3	15.0
Sore throat	4	11.1	2	14.3	2	10.0
Anosmia	0	0.0	0	0.0	0	0.0
Shortness of breath	12	33.3	3	21.4	8	40.0
Comorbidities (yes)	26	72.2	8	57.1	16	80.0
Diabetes	9	25.0	2	14.3	7	35.0
Hypertension	12	33.3	5	35.7	6	30.0
Heart diseases	10	27.8	1	7.1	8	40.0
Chronic kidney disease	4	11.1	0	0.0	3	15.0
Chronic respiratory disease	4	11.1	0	0.0	4	20.0
Chronic liver disease	1	2.8	0	0.0	1	5.0
Cancer	2	5.6	1	7.1	1	5.0
Immunosuppression	1	2.8	1	7.1	0	0.0



Figure A1: Percentage of cases by week of sample collection and age groups.



ISO week starts on Monday and ends on Sunday. Data for the last week refer to Monday and Tuesday only



Figure A2. 14-day cumulative incidence rate (per 100,000 population) by age groups

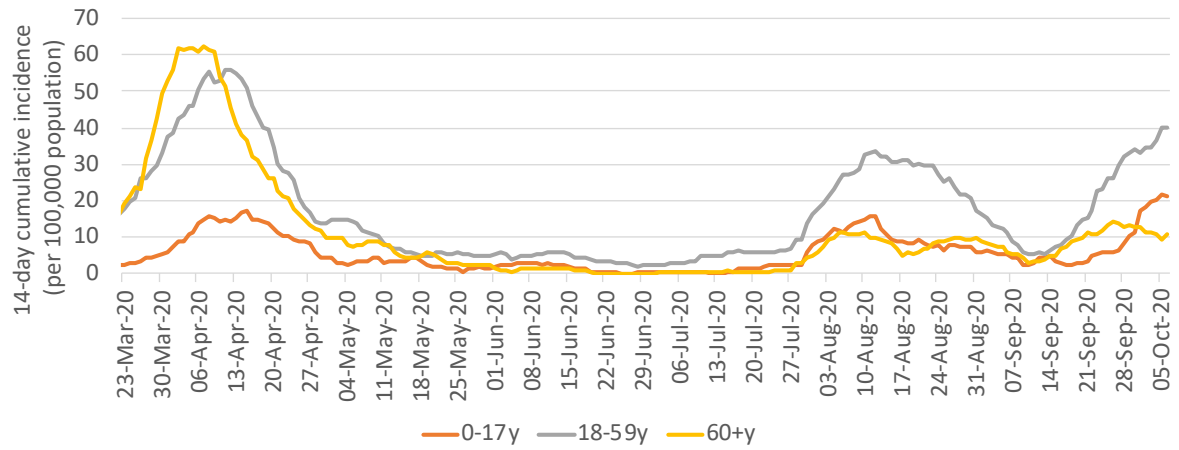




Figure A3: 14-day cumulative incidence rate (per 100,000 population) by district for the last 14 days

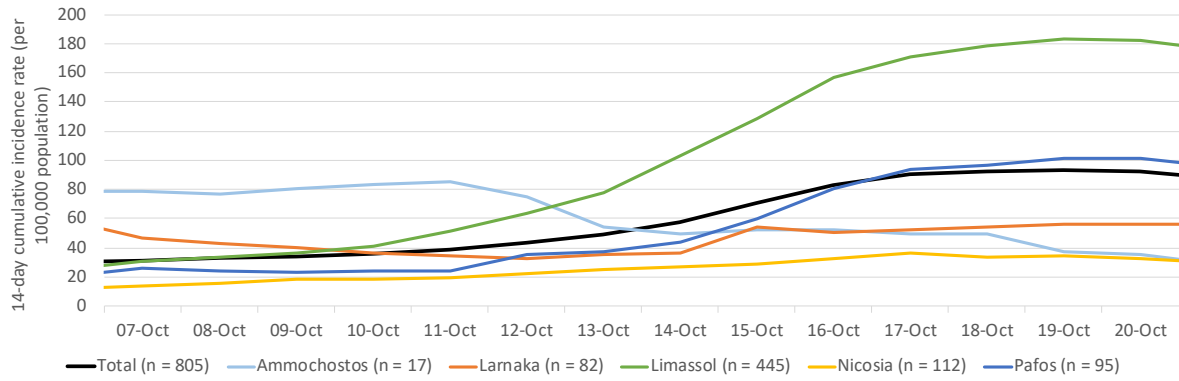
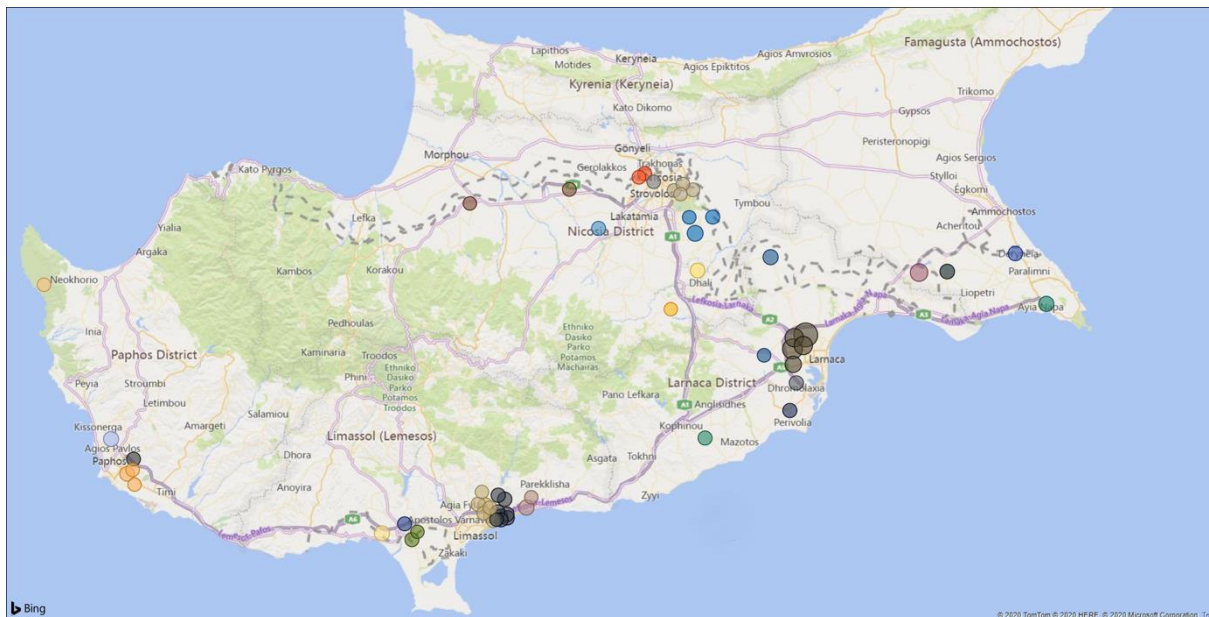




Figure A4: Distribution of cases by postal code (n = 2,588 with information available).



Each colour represents a different postal code and the size changes according to the number of cases.



Figure A5: Number of cases by origin of infection, by date of sample collection in the last 14 days (07-20 October, 2020).

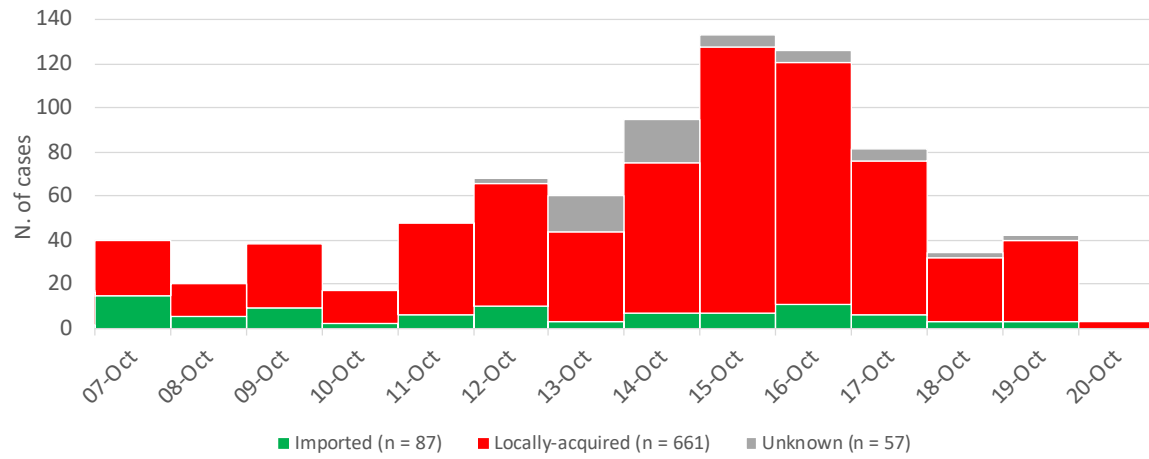




Figure A6: Time from date of sampling to death of COVID-19 cases who died (n = 32; for three cases who died on the day of sampling/reporting, the time alive has been considered 0.5 days).

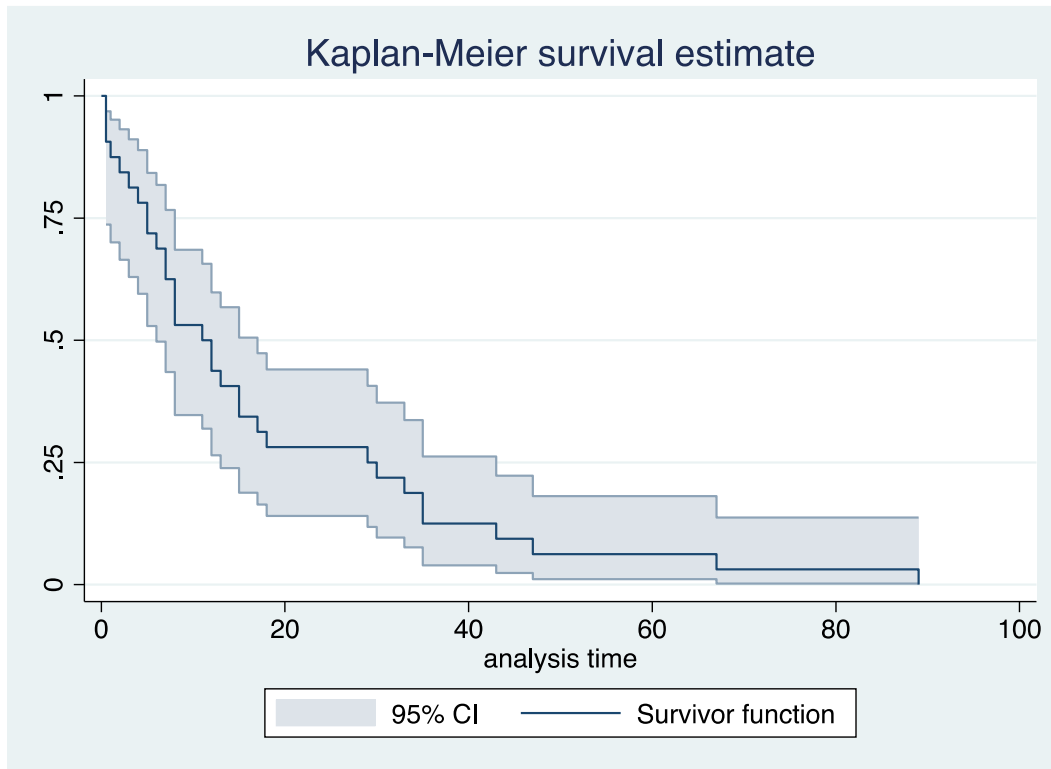




Figure A7. Number of deaths (for all causes), per week (until week 36) and year (2017-2020) in the Republic of Cyprus.

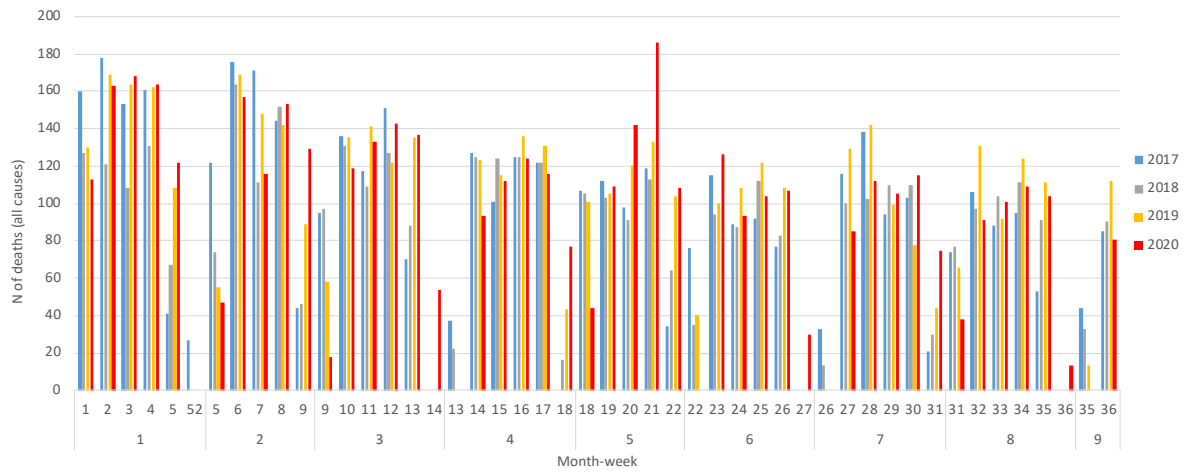




Figure A8: Length of stay in ICU (n = 36; for two cases who died on the same day of ICU admission the length of stay in ICU has been considered 0.5 days).

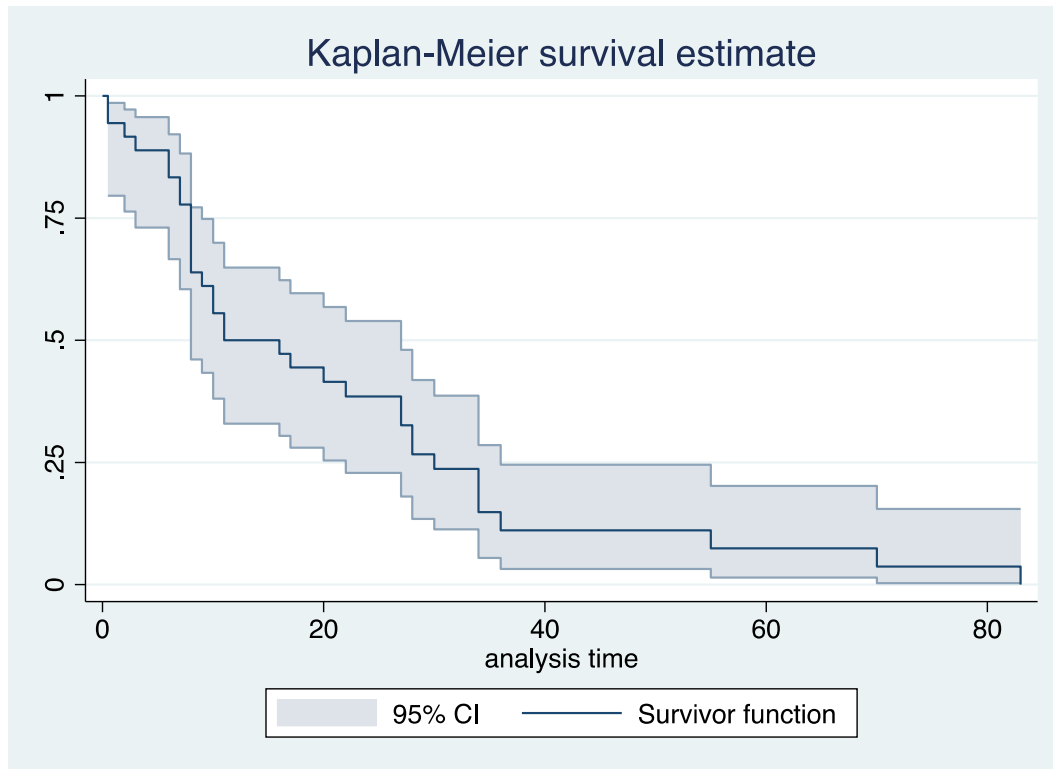




Figure A9: Length of stay in ICU of patients who died and had been admitted to an ICU (n = 20; for two cases who died the same day of ICU admission the length of stay in ICU has been considered 0.5 days).

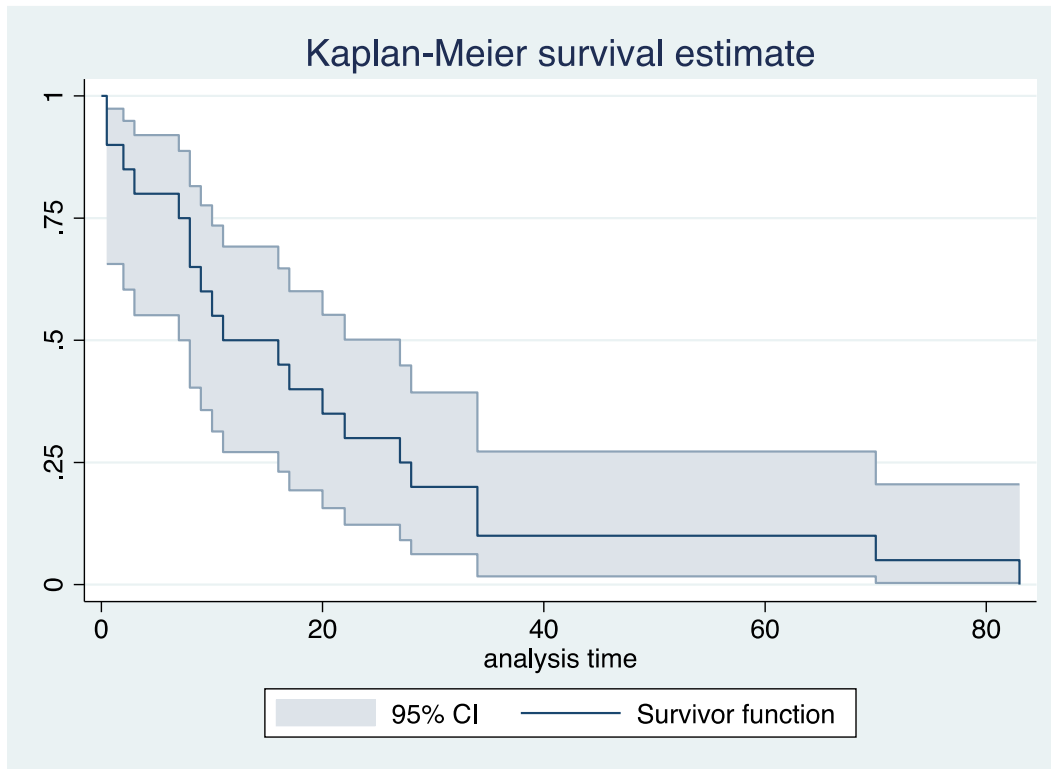
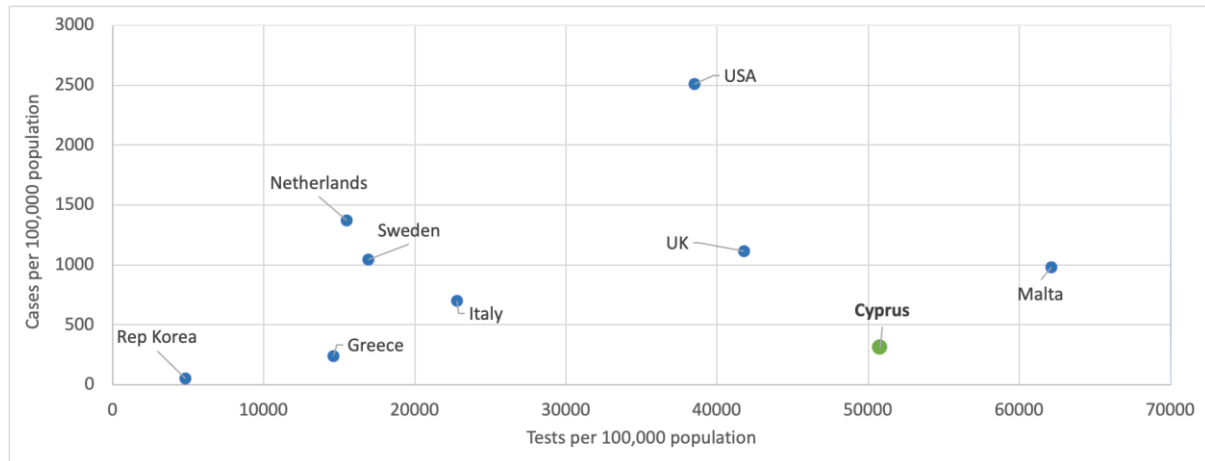




Figure A10: Cumulative tests and cases per 100,000 population in Cyprus and other selected countries (Updated: 20/10/2020).



Data source for Cyprus: internal communication; data source for other countries:

<https://www.finddx.org/covid-19/test-tracker/>

Numbers of cases and tests for Cyprus are aggregated and include people from abroad and the British bases, while the total population does not include inhabitants from abroad or from the British bases.



ΥΠΟΥΡΓΕΙΟ ΥΓΕΙΑΣ

Table B1: Number of cases by date of sampling, laboratory reporting, death, and ICU admission and number of cases in hospital (excluding ICU) and in ICU every day.

Date	Date of sampling (n = 2704)	Date of laboratory reporting	Date of death (n = 32)	N of patients in hospital (excluding ICU)	Date of ICU admission (n = 34)	N. of patients in ICU
01-Mar	0	0	0	0	0	0
02-Mar	0	0	0	0	0	0
03-Mar	0	0	0	0	0	0
04-Mar	0	0	0	0	0	0
05-Mar	0	0	0	0	0	0
06-Mar	0	0	0	0	0	0
07-Mar	1	0	0	0	0	0
08-Mar	0	0	0	0	0	0
09-Mar	1	2	0	0	0	0
10-Mar	4	0	0	1	0	0
11-Mar	2	0	0	4	0	0
12-Mar	6	0	0	6	0	0
13-Mar	13	16	0	7	0	0
14-Mar	8	5	0	9	0	0
15-Mar	12	8	0	9	0	0
16-Mar	5	13	0	9	1	1
17-Mar	8	4	0	8	1	2
18-Mar	17	15	0	10	0	2
19-Mar	13	9	0	15	0	2
20-Mar	15	11	0	18	1	3
21-Mar	10	0	1	16	1	4
22-Mar	6	16	0	16	1	5
23-Mar	13	19	0	20	1	6
24-Mar	18	8	2	25	3	9
25-Mar	13	10	0	27	3	10
26-Mar	34	20	0	32	1	10
27-Mar	31	24	3	37	2	11
28-Mar	26	21	1	37	3	12
29-Mar	33	27	1	43	1	12
30-Mar	37	33	0	45	0	11
31-Mar	39	45	2	49	0	12
01-Apr	29	56	2	47	1	13
02-Apr	47	29	0	56	0	12
03-Apr	21	32	1	58	2	13
04-Apr	25	38	1	57	0	12
05-Apr	9	18	0	53	0	11
06-Apr	37	23	0	48	1	13
07-Apr	39	23	0	45	1	13
08-Apr	23	32	0	47	1	14
09-Apr	17	31	1	42	1	14
10-Apr	18	20	0	43	1	14
11-Apr	37	20	1	38	0	14
12-Apr	22	16	1	35	1	15
13-Apr	26	41	0	30	0	15

Data are subject to change due to the rapidly evolving situation



ΥΠΟΥΡΓΕΙΟ ΥΓΕΙΑΣ

14-Apr	25	25	0	32	0	14
15-Apr	15	16	0	32	0	13
16-Apr	9	19	0	31	2	15
17-Apr	4	15	0	28	0	15
18-Apr	5	6	0	28	0	14
19-Apr	0	1	0	24	0	14
20-Apr	11	6	0	23	1	15
21-Apr	6	13	0	23	0	15
22-Apr	7	5	1	23	0	14
23-Apr	13	7	1	21	0	13
24-Apr	2	12	0	23	0	10
25-Apr	9	3	0	22	0	10
26-Apr	4	2	1	18	1	11
27-Apr	16	11	0	22	0	8
28-Apr	5	16	0	25	0	7
29-Apr	9	4	0	24	0	7
30-Apr	7	6	0	22	0	6
01-May	7	8	0	21	0	6
02-May	3	7	0	20	0	6
03-May	2	4	0	21	0	6
04-May	4	6	0	20	0	6
05-May	5	4	1	23	0	6
06-May	6	4	0	22	0	5
07-May	2	3	0	21	0	5
08-May	3	3	0	17	0	5
09-May	8	3	1	17	0	5
10-May	1	4	0	18	0	4
11-May	0	3	0	18	0	4
12-May	3	4	1	16	0	4
13-May	2	0	1	10	0	4
14-May	3	3	0	9	0	3
15-May	2	4	0	9	0	3
16-May	4	4	0	8	0	3
17-May	0	0	0	7	0	3
18-May	1	1	0	6	0	4
19-May	5	5	0	6	0	4
20-May	3	0	0	6	0	4
21-May	8	7	0	6	0	4
22-May	1	1	0	6	0	4
23-May	2	3	0	6	0	4
24-May	0	3	0	6	0	4
25-May	2	2	0	7	0	4
26-May	0	1	0	8	0	3
27-May	3	1	0	7	0	3
28-May	0	1	0	6	0	3
29-May	2	1	0	5	0	3
30-May	3	1	0	4	0	3
31-May	1	4	0	4	0	3
01-Jun	4	2	0	4	0	3
02-Jun	6	5	0	5	0	3



ΥΠΟΥΡΓΕΙΟ ΥΓΕΙΑΣ

03-Jun	1	5	0	5	0	3
04-Jun	0	0	0	5	0	3
05-Jun	5	1	1	5	0	3
06-Jun	5	1	0	5	0	2
07-Jun	1	8	0	4	0	2
08-Jun	2	1	0	4	0	2
09-Jun	2	2	0	3	0	2
10-Jun	2	3	0	4	0	2
11-Jun	4	1	0	4	0	2
12-Jun	0	4	0	4	0	2
13-Jun	3	0	0	4	0	2
14-Jun	2	3	0	4	0	2
15-Jun	0	2	0	5	0	2
16-Jun	0	0	0	5	0	2
17-Jun	1	0	0	5	0	2
18-Jun	0	0	1	3	0	2
19-Jun	1	1	0	2	0	1
20-Jun	1	0	0	3	0	0
21-Jun	0	1	0	3	0	0
22-Jun	1	1	0	4	0	0
23-Jun	3	2	0	3	0	0
24-Jun	0	1	0	3	0	0
25-Jun	2	1	0	3	0	0
26-Jun	0	2	0	3	0	0
27-Jun	0	0	0	3	0	0
28-Jun	2	0	0	3	0	0
29-Jun	2	4	0	3	0	0
30-Jun	1	0	0	3	0	0
01-Jul	0	1	0	3	0	0
02-Jul	1	0	0	3	0	0
03-Jul	1	0	0	3	0	0
04-Jul	3	4	0	3	0	0
05-Jul	0	1	0	3	0	0
06-Jul	2	0	0	3	0	0
07-Jul	2	3	0	2	0	0
08-Jul	2	3	0	2	0	0
09-Jul	3	2	0	2	0	0
10-Jul	8	1	0	2	0	0
11-Jul	0	8	0	2	0	0
12-Jul	1	0	0	2	0	0
13-Jul	1	1	0	2	0	0
14-Jul	2	2	0	2	0	0
15-Jul	7	5	0	3	0	0
16-Jul	0	3	0	3	0	0
17-Jul	5	5	0	3	0	0
18-Jul	1	1	0	3	0	0
19-Jul	0	0	0	3	0	0
20-Jul	2	1	0	3	0	0
21-Jul	0	1	0	3	0	0
22-Jul	5	4	0	3	0	0



ΥΠΟΥΡΓΕΙΟ ΥΓΕΙΑΣ

23-Jul	2	3	0	2	0	0
24-Jul	9	7	0	3	0	0
25-Jul	3	2	0	3	0	0
26-Jul	1	2	0	3	0	0
27-Jul	3	3	0	3	0	0
28-Jul	18	9	0	4	0	0
29-Jul	9	17	0	7	0	0
30-Jul	32	20	0	8	0	0
31-Jul	20	14	0	9	0	0
01-Aug	14	29	0	10	0	0
02-Aug	12	5	1	8	0	0
03-Aug	18	24	0	7	0	0
04-Aug	14	12	0	7	0	0
05-Aug	19	12	0	8	0	0
06-Aug	8	17	0	7	0	0
07-Aug	11	6	0	9	0	0
08-Aug	6	14	0	7	0	0
09-Aug	7	4	0	7	0	0
10-Aug	27	20	0	7	0	0
11-Aug	21	17	0	7	0	0
12-Aug	10	23	0	7	0	0
13-Aug	19	8	0	4	0	0
14-Aug	14	16	0	4	0	0
15-Aug	5	9	0	4	0	0
16-Aug	7	10	0	4	0	0
17-Aug	18	9	0	2	1	1
18-Aug	14	19	0	2	0	1
19-Aug	10	18	0	2	0	1
20-Aug	13	5	0	3	0	1
21-Aug	10	11	0	3	0	1
22-Aug	3	10	0	3	0	1
23-Aug	10	8	0	5	0	1
24-Aug	17	11	0	5	0	1
25-Aug	8	12	0	6	0	1
26-Aug	18	13	0	7	0	1
27-Aug	7	11	0	6	0	1
28-Aug	3	9	0	6	0	1
29-Aug	3	4	0	7	0	1
30-Aug	2	2	0	8	0	1
31-Aug	1	1	0	8	0	1
01-Sep	5	3	1	7	0	1
02-Sep	5	3	0	6	0	1
03-Sep	2	2	0	6	1	2
04-Sep	5	8	0	6	0	2
05-Sep	1	3	0	3	0	2
06-Sep	1	0	0	3	0	2
07-Sep	2	2	1	3	0	2
08-Sep	3	1	0	4	0	1
09-Sep	2	3	0	4	0	1
10-Sep	2	3	0	4	0	1



ΥΠΟΥΡΓΕΙΟ ΥΓΕΙΑΣ

11-Sep	5	1	0	4	0	1
12-Sep	7	5	0	4	0	1
13-Sep	1	8	0	4	0	1
14-Sep	9	7	0	6	0	1
15-Sep	9	4	0	5	0	1
16-Sep	11	13	0	5	0	1
17-Sep	10	6	0	6	0	1
18-Sep	13	18	0	6	0	1
19-Sep	17	13	0	7	0	1
20-Sep	10	10	0	9	0	1
21-Sep	9	14	0	9	0	1
22-Sep	14	14	0	12	0	0
23-Sep	29	28	0	13	0	0
24-Sep	10	9	0	16	0	0
25-Sep	23	11	0	18	0	0
26-Sep	7	16	0	18	0	0
27-Sep	19	16	0	20	0	0
28-Sep	25	26	0	20	0	0
29-Sep	16	14	0	17	0	0
30-Sep	16	16	0	12	0	1
01-Oct	16	19	0	12	0	1
02-Oct	20	17	0	10	0	2
03-Oct	20	20	0	11	0	2
04-Oct	19	20	0	11	0	2
05-Oct	28	21	0	10	0	3
06-Oct	17	27	2	9	0	3
07-Oct	40	18	0	8	0	2
08-Oct	20	42	0	8	0	2
09-Oct	38	24	1	8	0	2
10-Oct	17	28	0	5	0	2
11-Oct	48	25	0	5	0	2
12-Oct	68	66	0	8	0	2
13-Oct	60	81	0	10	0	2
14-Oct	95	59	0	9	0	2
15-Oct	133	98	0	13	0	2
16-Oct	126	133	0	18	0	2
17-Oct	81	112	0	22	0	2
18-Oct	34	54	0	23	0	2
19-Oct	42	48	0	25	0	2
20-Oct	3	25	0	24	0	2