



Trends in COVID-19 diagnoses, intensive care unit admissions and COVID-19 related deaths by age-groups (Cyprus, November 2020-March 2021)

Produced by the Epidemiological Surveillance Unit of the Ministry of Health

Contributors: Annalisa Quattrocchi, Ioannis Mamais, Valentinos Silvestros, Anna Demetriou (Health Monitoring Unit), Maria Athanasiadou (Health Monitoring Unit), Theopisti Kyprianou (Health Monitoring Unit), Androulla Stylianou, Sotiroula Sotiriou, Fani Theofhanous, Christos Charalambous, Ioanna Gregoriou, Olga Kalakouta, Georgios Nikolopoulos

Scientific Committee: Constantinos Constantinou, Niki Paphitou, Georgios Nikolopoulos, Maria Koliou, George Panos, Eirini Christaki, Zoi – Dorothea Pana, Constantinos Tsioutis, Peter Karayiannis, George Petrikkos, Petros Agathangelou, Constantinos Phellas, George Mixides

Diagnosis

The age distribution of COVID-19 cases (n. of cases in each age-group divided by the total number of cases in a given month), between November 2020 and March 2021, shows a stable pattern for almost all age groups. However, in the last two months (Feb-Mar 2021), there is a slight decline in the proportion of cases for those aged 70-79 and 80+ (Figure 1).

In March 2021, the monthly diagnosis rate, expressed per 100,000 population (n. of cases in each age-group in a given month divided by the population in that age group), is increasing in all age-groups. However, the increase is less pronounced in those aged 70-79 and 80+ (Figure 2).

Figure 1. Age distribution (monthly) of COVID-19 cases (Cyprus, November 2020 - March 2021).

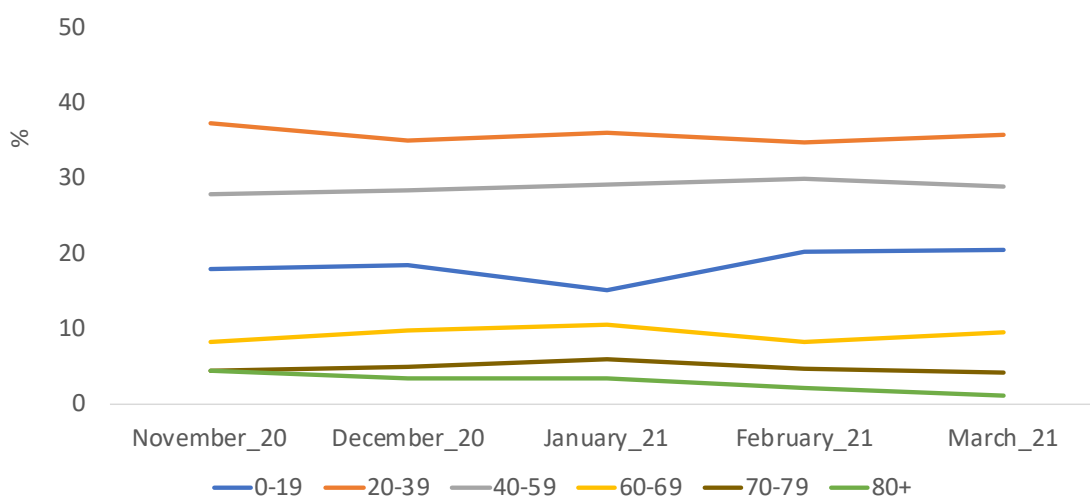
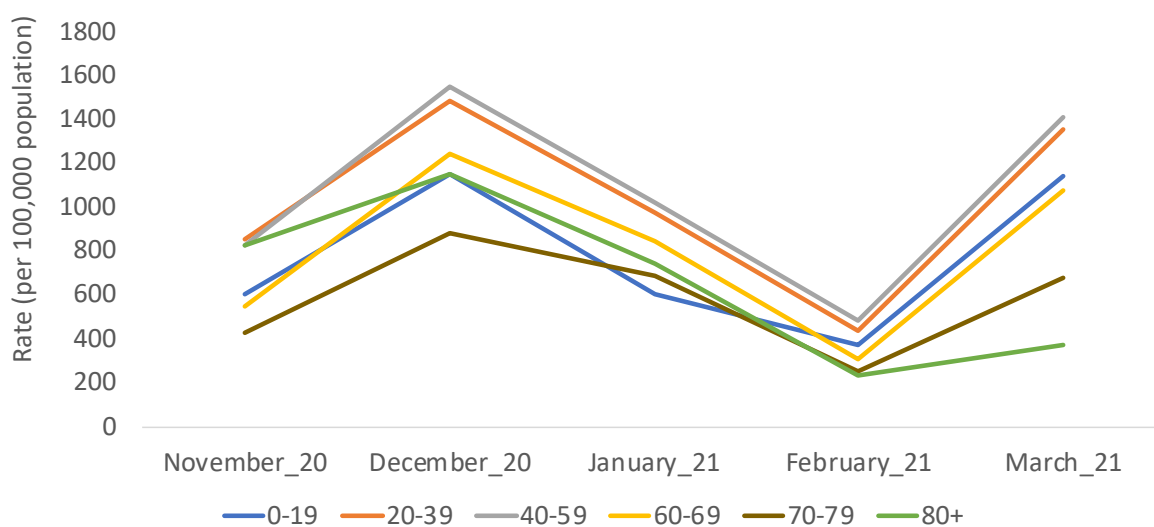


Figure 2. Monthly COVID-19 diagnosis rates by age-groups (Cyprus, November 2020 - March 2021).



ICU admissions

The age distribution of ICU admissions (n. of ICU admissions in each age-group divided by the total number of ICU admissions in a given month), shows progressively decreasing proportions, since January 2021 and February 2021, for those aged 80+ and 70-79, respectively. Whereas the proportion is increasing, since December 2020 and February 2021, for those aged 40-59 and 60-69, respectively (Figure 3).

Since January 2021, the monthly ICU admission rate, expressed per 100,000 population (n. of ICU admissions in each age-group in a given month divided by the population in that age group), is gradually decreasing for those 80+ (Figure 4).

Figure 3. Age distribution (monthly) of ICU admissions (Cyprus, November 2020 - March 2021).

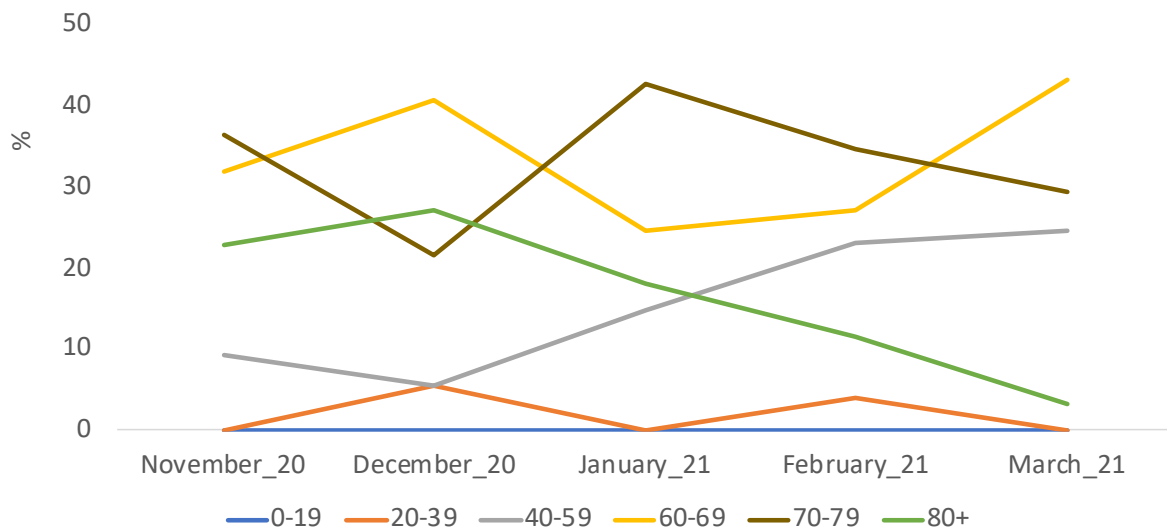
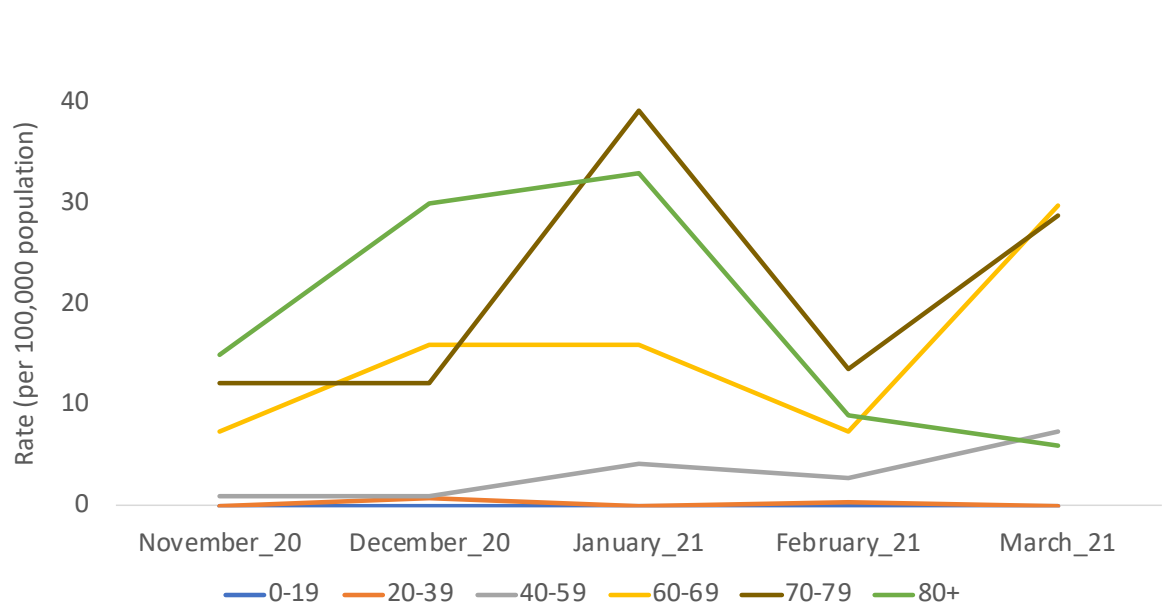


Figure 4. Monthly ICU admission rates by age-groups (Cyprus, November 2020 - March 2021).



COVID-19 associated deaths

The age distribution of COVID-19 deaths (n. of COVID-19 related deaths in each age-group divided by the total number of COVID-19 related deaths in a given month), shows a progressively decreasing trend, since January 2021, in those aged 80+. Whereas, in March 2021, the proportion increased in those aged 40-59 and 60-69 (Figure 5).

Also, the monthly rate of COVID-19 related deaths, expressed per 100,000 population (n. of COVID-19 deaths in each age-group in a given month divided by the population in that age group), quickly fell in those 80+ (Figure 6).

Figure 5. Age distribution (monthly) of COVID-19 related deaths (Cyprus, November 2020 - March 2021).

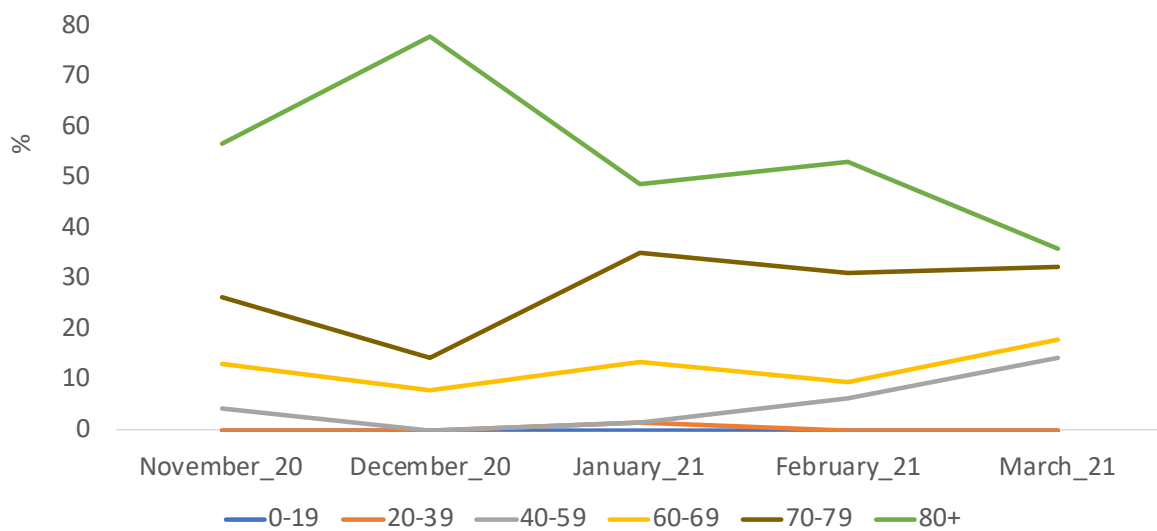


Figure 6. Monthly COVID-19 mortality rates by age-groups (Cyprus, November 2020 - March 2021).

