



Coronavirus Disease 2019 (COVID-19)

National Surveillance Report as of 30/11/2020

Date of publication: 04/12/2020

Produced by the Epidemiological Surveillance Unit of the Ministry of Health

Contributors: Annalisa Quattrocchi, Ioannis Mamais, Valentinos Silvestros, Anna Demetriou (Health Monitoring Unit), Maria Athanasiadou (Health Monitoring Unit), Theopisti Kyprianou (Health Monitoring Unit), Androulla Stylianos, Sotiroula Sotiriou, Fani Theofhanous, Christos Charalambous, Ioanna Gregoriou, Maria Koliou, Olga Kalakouta, Georgios Nikolopoulos

Scientific Committee: Constantinos Constantinou, Niki Paphitou, Georgios Nikolopoulos, Maria Koliou, George Panos, Eirini Christaki, Zoi – Dorothea Pana, Constantinos Tsioutis, Leondios Kostrikis, Peter Karayiannis, George Petrikkos, Petros Agathangelou, George Mixides

Suggested citation: Epidemiological Surveillance Unit of the Ministry of Health, Cyprus. National Situation Report. Coronavirus Disease 2019 (COVID-19), 04 December 2020.



Summary

- As of November 30th, a total of 10,622 COVID-19 cases have been diagnosed, of which 52 died due to COVID-19 (case fatality risk: 0.5%).
- The 14-day cumulative diagnosis rate is 349.8 per 100,000 population.
- In the last 14 days (17-30 November), 3,064 cases were diagnosed.
 - The median age was 37 years (Interquartile range - IQR: 24-54 years); 50.1% were female (n = 1,536), 49.1% male (n = 1,505), and for 23 cases (0.8%) sex is unknown.
 - By place of exposure: 1.2% (n = 36) were imported, 82.6% (n = 2,530) were locally-acquired, and 16.3% (n = 498) are unknown.
- As of December 2nd, 121 people were still hospitalized. The median age of patients still hospitalised (n = 121) is 78 years (IQR: 63-85 years), 50.4% (n = 61) are females.
- Among cases still hospitalised, 14 are in intensive care units (ICU) and 10 are intubated. The median age of current ICU patients is 72 (IQR: 68-81) years and 10 (71.4%) are males. Ten (71.4%) patients currently in ICU have pre-existing conditions.
- A total of 624,566 tests have been performed as of December 2nd (71,305.6 per 100,000 population). In particular, over the last 14 days, 70,248 tests have been performed (8,020.1 per 100,000 population).



Epidemiological surveillance in the Republic of Cyprus

Analyses are based on laboratory-confirmed cases notified to the Epidemiological Surveillance Unit of the Ministry of Health.

As of November 30th, 10,622 laboratory-confirmed cases of coronavirus disease 2019 (COVID-19) have been diagnosed (Figure 1, 2 and 3).

In the last 14 days (17 - 30 November), 3,064 cases have been diagnosed. The 14-day cumulative diagnosis rate of COVID-19 (per 100,000 population), a measure which reflects the number of active COVID-19 cases in the population (prevalence)¹, is 349.8 per 100,000 population (Figure 3).

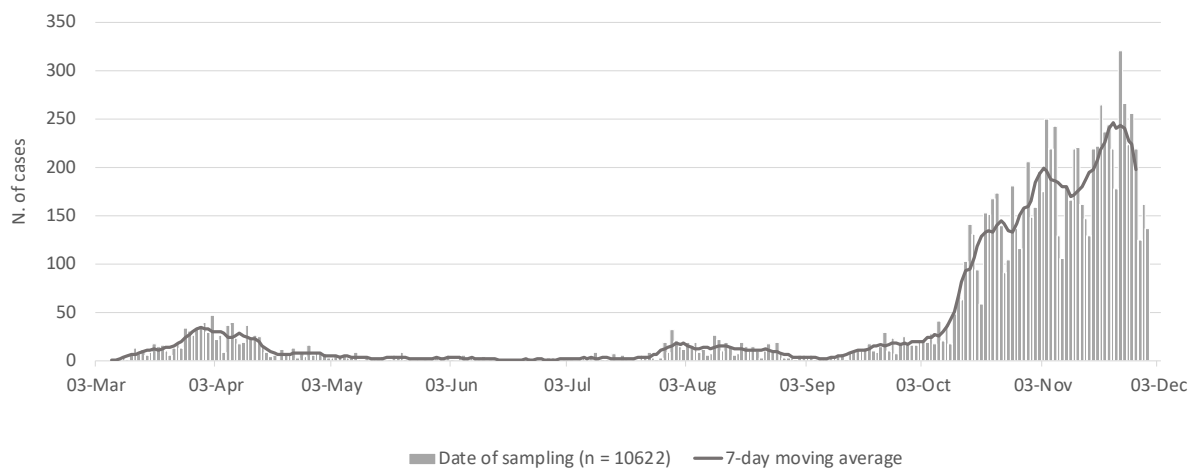


Figure 1: Number and 7-day moving average of laboratory-confirmed COVID-19 cases in Cyprus since 03/03/2020 by date of sample collection.

¹Coronavirus disease 2019 (COVID-19) pandemic: increased transmission in the EU/EEA and the UK – seventh update, 25 March 2020. Stockholm: ECDC; 2020.
<https://www.ecdc.europa.eu/sites/default/files/documents/RRA-seventh-update-Outbreak-of-coronavirus-disease-COVID-19.pdf>

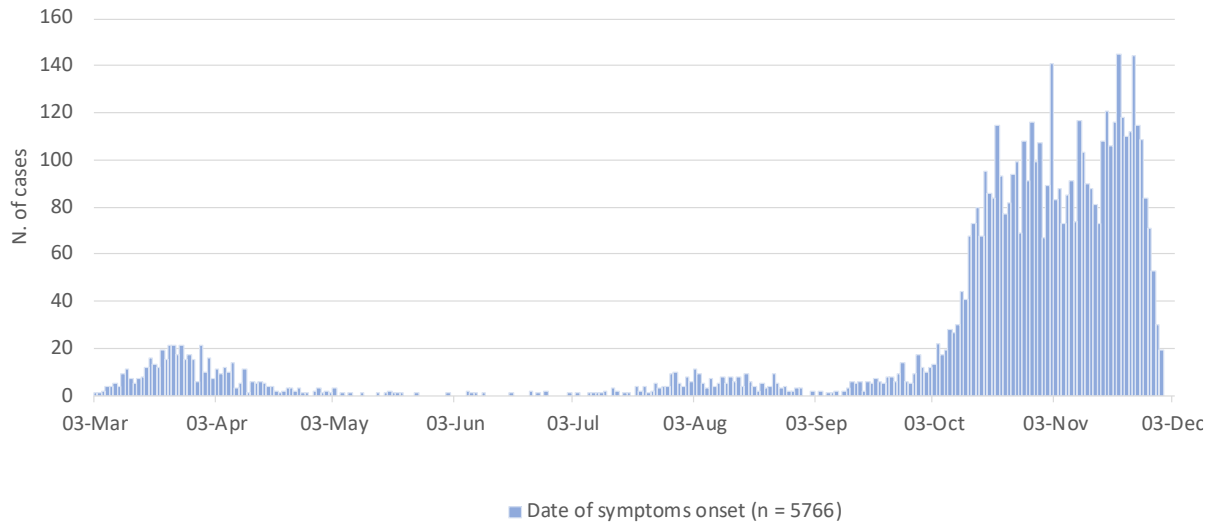


Figure 2: Number of laboratory-confirmed COVID-19 cases in Cyprus since 03/03/2020 by date of symptoms onset.

Recent data should be interpreted with caution due to the possibility that cases with date of onset within the reporting period have not yet been diagnosed.

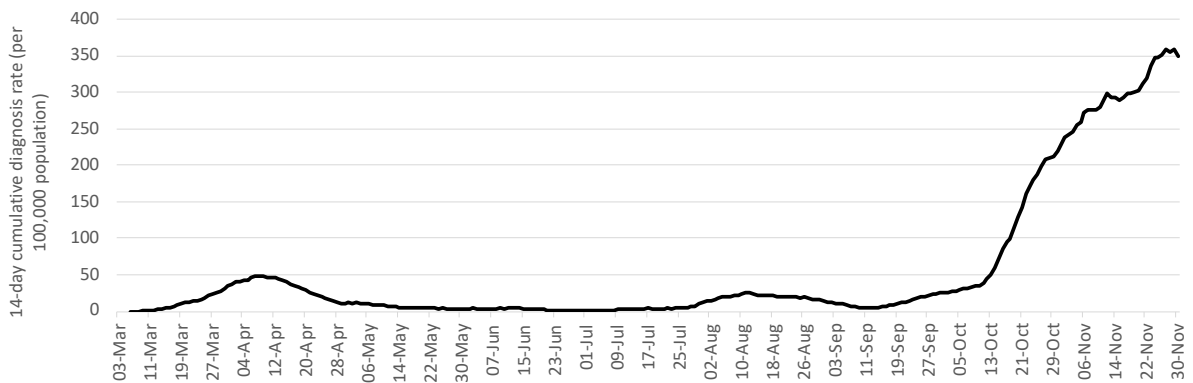


Figure 3: COVID-19 14-day cumulative diagnosis rate per 100,000 population (proxy of COVID-19 prevalence).



Characteristics of the cases diagnosed in the last 14 days

Age and sex

Among 3,064 cases diagnosed since 17th November, 50.1% were female (n = 1,536), 49.1% male (n = 1,505), and for 23 cases (0.8%) sex is unknown.

By age group, cases include 477 infants, children and adolescents aged 0-17 years-old (15.6%), 2,053 adults aged 18-59 years (67%), 527 persons aged 60 years and older (17.2%), and for 7 cases (0.2%) information was missing. Figure 4 shows the number of cases by 10-year age band and sex. The median age of all cases diagnosed in the last 14 days is 37 years (IQR: 24-54 years). The median age of adult cases (≥ 18 years) is 41 years (IQR: 30-57 years).

The 14-day cumulative diagnosis rate (per 100,000 population) by age groups is shown in figure A1 in Appendix.

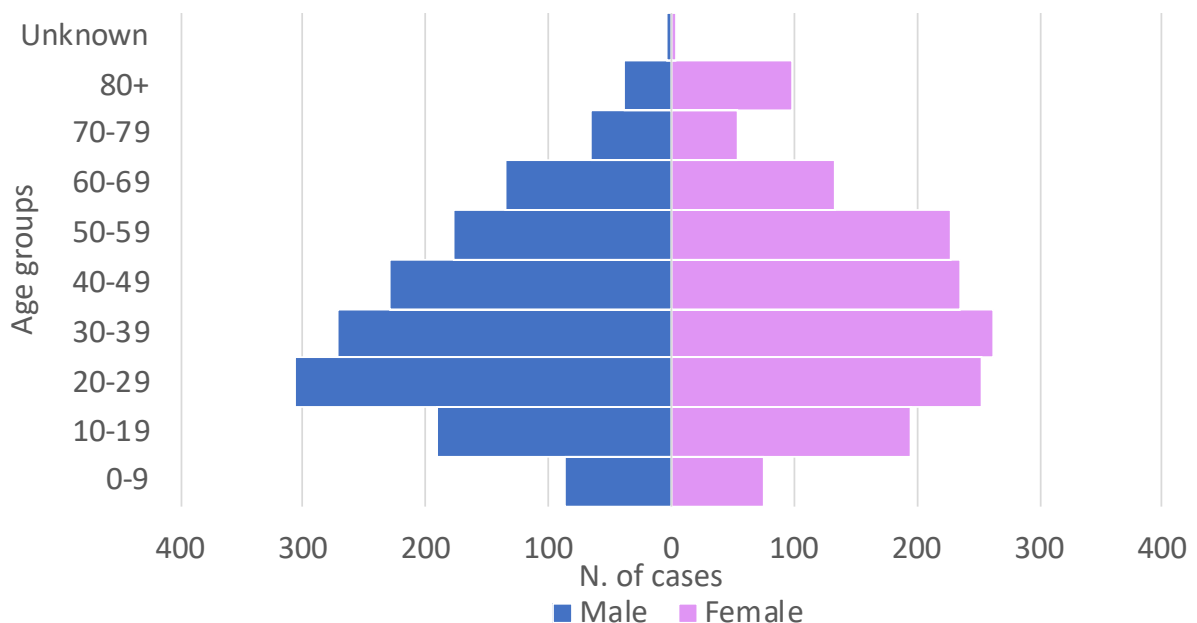


Figure 4: Laboratory-confirmed COVID-19 cases in Cyprus, diagnosed in the last 14 days, by age groups and sex.

Among all cases diagnosed in the last 14 days, 1,270 (41.5%) were reported in Nicosia district, 918 (30%) in Limassol, 404 (13.2%) in Larnaka, 226 (8.7%) in Ammochostos, 135 (4.4%) in Pafos, and 71 (2.3%) were reported either in the British bases or had a residence abroad, or information was not available. Figure A2 in appendix shows the 14-day cumulative diagnosis rate (per 100,000 population) by district.



Epidemiological link

In the last 14 days (17 - 30 November), of 3,064 cases sampled and notified, 1.2% (n = 36) were imported, 82.6% (n = 2,530) were locally-acquired, and 16.3% (n = 498) are unknown. Table A1 and Figure A3 (A&B) in Appendix show the characteristics of cases by origin of infection and the daily number of locally-acquired cases by district in the recent period, respectively.

Clinical features

In the last 14 days (17 - 30 November), clinical information is available for 95.6% (n = 2,930), of which 36.4% (n = 1,066) reported no symptoms at diagnosis and 63.6% (n = 1,864) reported at least one symptom.

Pre-existing conditions

In the last 14 days (17 - 30 November), information on comorbidities was available for 2,892 (94.4%) cases. Of these, 850 (29.4%) reported at least one comorbidity.



Deaths

Among cases diagnosed until November 30th, 52 COVID-19 associated deaths were reported in Cyprus (Case Fatality Risk - CFR: 0.5%).

The COVID-19 associated mortality is 5.9 per 100,000 population.

Thirty-five deaths (67.3%) occurred in men and 17 (32.7%) in women; the median age of all deaths was 76.5 years (IQR: 68.5-83 years). Twenty-three deaths were reported among residents in Limassol, 10 in Larnaka, nine in Pafos, seven in Nicosia, and three in Ammochostos.

The median time from date of sampling to death (due to COVID-19) was 11 days (IQR: 5-17.5 days).

Figure 5a reports the number of COVID-19 associated deaths by date.

Among cases diagnosed until November 30th, 72 deaths (all causes) were reported in Cyprus (CFR: 0.7%).

The mortality (all-causes) for people with COVID-19 is 8.2 per 100,000 population.

Fourty-eight deaths (66.7%) occurred in men and 24 (33.3%) in women; the median age of all deaths was 77.5 years (IQR: 69.5-84 years). Thirty-three deaths were reported among residents in Limassol, 14 in Larnaka, 11 in Pafos, eight in Nicosia, five in Ammochostos, and one death occurred among cases reported either in the British bases or had a residence abroad, or information was not available.

The median time from date of sampling to death (all-causes) was 10.5 days (IQR: 5-15.5 days).

Figure 5b reports the number of all deaths by date.



Hospitalization and intensive care unit (ICU²) admissions³

In total, 5.8% (n = 617) of people with COVID-19 received hospital care, as of December 2nd. The median age of hospitalized patients was 63 years (IQR: 48-77 years). Hospitalized cases were mainly males (n = 355; 57.6%).

The median age of patients still hospitalised (n = 121) is 78 years (IQR: 63-85 years), 50.4% (n = 61) are females, and 37.2% (n = 45) are from Nicosia district. Seventy-two cases (73.5%) still hospitalised have comorbidities.

Figure 6a shows the total number of first hospital admissions by date.

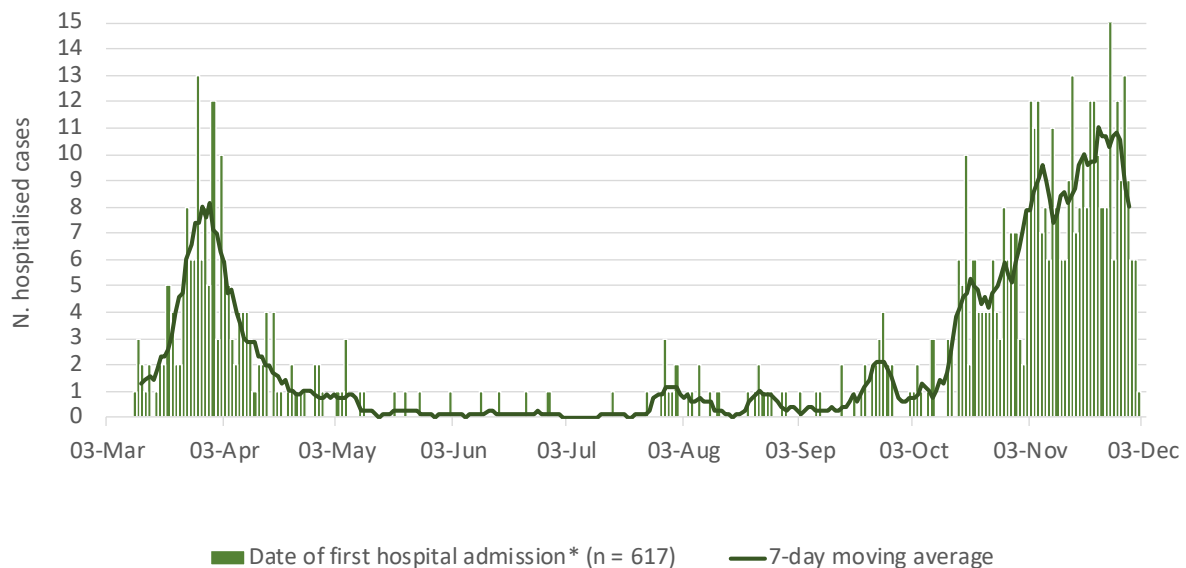


Figure 6a: Number and 7-day moving average of laboratory-confirmed COVID-19 cases by date of first hospital admission.

**Date of hospital admission was replaced with date of sampling for inpatients hospitalised prior to the beginning of the epidemic.*

² Intensive care unit (ICU) refers only to the ICU in Limassol General Hospital and to the ICU in Nicosia General Hospital.

³ Data on hospitalisation and ICU are provisional and should be interpreted with caution because delay in data reporting is likely; for the construction of the curve, people are no longer in an ICU/hospital the day next to the date of their discharge, death or transfer.



Figure 6b reports the number of individuals in hospital every day (excluding those in ICU).

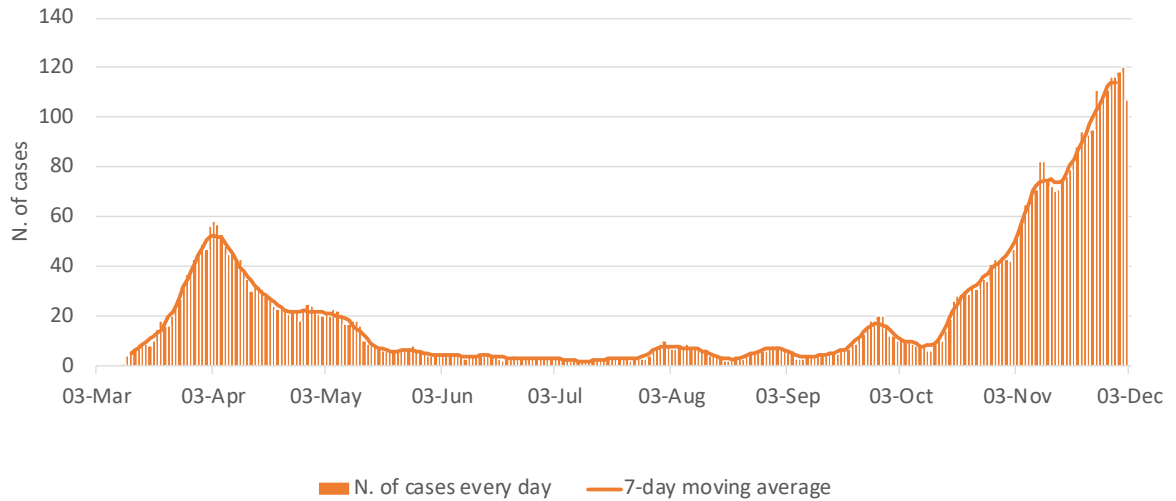


Figure 6b: Number and 7-day moving average of laboratory-confirmed COVID-19 cases in hospital every day (excluding those in ICU). *Patients in hospital for only part of the day (e.g. transferred, dead) are included.*



Overall, 62 cases (10.1% of all hospitalized patients) have been admitted to ICU. The median age of patients ever admitted to ICU was 69 years (IQR: 62-76 years). ICU patients are mainly male (n = 46; 74.2%). The overall median length of stay in ICU (for all 62 ICU cases) was 10 days (IQR: 7-27 days).

As of December 2nd, 14 cases are still in ICU (including deaths / discharged on that day). The median age of current ICU patients is 72 (IQR: 68-81) years and 10 (71.4%) are males. Ten (71.4%) patients currently in ICU have pre-existing conditions.

The number of cases currently in ICU is 1.6 per 100,000 population (as of December 2nd, including deaths/discharged on that day).

A total of 54 ICU patients (87.1% of all ICU patients) have been intubated - currently there are 10 patients intubated in ICU (including deaths/discharged on that day). Figure 7 shows the number of patients in ICU, by day and intubation status.

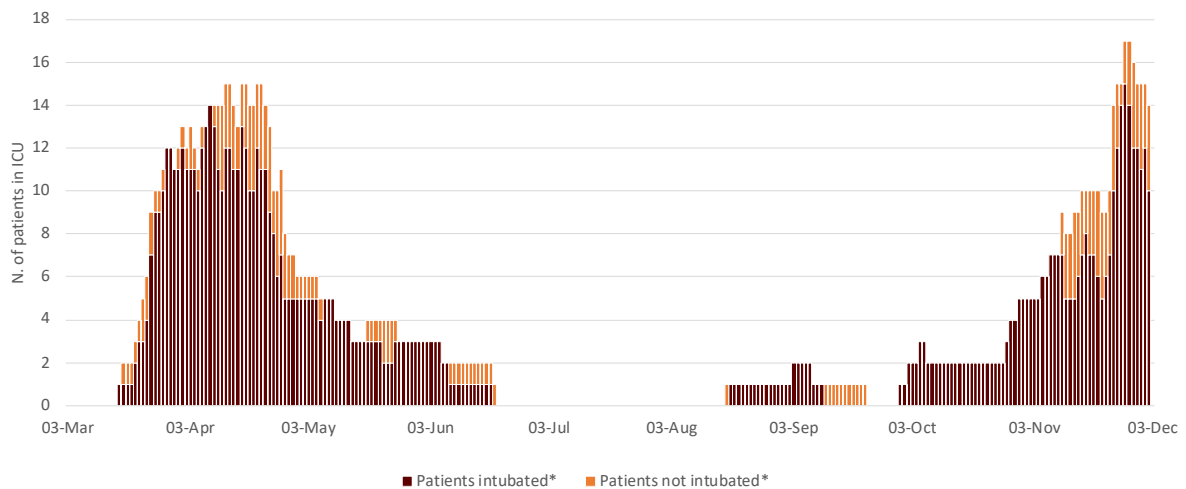


Figure 7: Number of laboratory-confirmed COVID-19 cases in ICU by date and intubation.

**Date of discharge/transfer/death included*



Recovered/released

As of December 2nd, among cases alive, 19.5% (n = 2,057) of COVID-19 cases have recovered/released from isolation⁴; of which 1,311 (63.7%) tested negative two consecutive times, and 746 (36.3%) have been released as per later guidelines⁵. The median time between the second negative result and the first date of sampling was 19 days (IQR: 18-30 days).

More updated information on recovery, based on new guidelines that do not require testing, will be available in next reports.

⁴ For symptomatic cases, or for cases hospitalised, a COVID-19 case can be considered cured after the resolution of symptoms and two negative tests for SARS-CoV-2 at 24-hour interval at least. For asymptomatic cases, or for persons isolated at home, the negative tests to document virus clearance should be obtained at a minimum of 14 days after the initial positive test (end of the quarantine period).

Novel coronavirus (SARS-CoV-2). Discharge criteria for confirmed COVID-19 cases- When is it safe to discharge COVID-19 cases from the hospital or end home isolation? - Technical Report, 10 March 2020. Stockholm: ECDC; 2020.

⁵ May – November 2020: A person is released 21 days after the initial diagnosis, if he/she has a positive test 14 days after the initial diagnosis and remains in isolation for one more week without being further tested.

Since 8th November 2020: A person who remained asymptomatic throughout his follow-up is released 14 days after initial diagnosis (date of sampling) and General Practitioner (GP) confirmation; a person with mild/moderate symptoms is released in absence of fever AND improvement of other symptoms (confirmed by GP) AND 14 days after onset of symptoms; cases requiring hospitalisation (severe cases), immunosuppressed individuals, residents and staff of vulnerable groups (i.e., nursing homes, refugee camps, prisons) are released in absence of fever AND 20 days after onset of symptoms. The criterion of two consecutive negative SARS-CoV-2 PCR results from respiratory samples, taken at least 24 hours apart, is recommended for immunosuppressed and critically ill COVID-19 patients.



Acknowledgments

We thank the companies CELLOCK (<https://cellock.com>) and GEOMATIC (<https://geomatic.com>) for their volunteering support.

Appendix

Table A1: Characteristics of cases by origin of infection, diagnosed in the last 14 days.

Characteristics	Total (n = 3064)		Imported (n = 36)		Locally-acquired (n = 2530)		Unknown (n = 498)	
	N	%	N	%	N	%	N	%
Sex								
Male	1505	49.1	18	50.0	1249	49.4	238	47.8
Female	1536	50.1	18	50.0	1279	50.6	239	48.0
Unknown	23	0.8	0	0.0	2	0.1	21	4.2
Age groups (years)								
0-9	162	5.3	0	0.0	138	5.5	24	4.8
10-19	387	12.6	8	22.2	333	13.2	46	9.2
20-29	567	18.5	9	25.0	466	18.4	92	18.5
30-39	542	17.7	7	19.4	448	18.4	87	17.5
40-49	466	15.2	2	5.6	377	17.7	87	17.5
50-59	406	13.3	6	16.7	349	14.9	51	10.2
60-69	270	8.8	1	2.8	224	13.8	45	9.0
70-79	119	3.9	2	5.6	99	8.9	18	3.6
80+	138	4.5	0	0.0	93	3.9	45	9.0
Unknown	7	0.2	1	2.8	3	3.7	3	0.6
Median age in years (IQR*)	37 (24-54)		32 (20-50)		36 (24-53)		39 (26-56)	
District								
Ammochostos	266	8.7	3	8.3	223	8.8	40	8.0
Larnaka	404	13.2	3	8.3	336	13.3	65	13.1
Limassol	918	30.0	11	30.6	800	31.6	107	21.5
Nicosia	1270	41.4	9	25.0	1027	40.6	234	47.0
Pafos	135	4.4	4	11.1	114	4.5	17	3.4
Other	71	2.3	6	16.7	30	1.2	35	7.0
Symptoms at diagnosis								
Yes	1864	60.8	15	41.7	1608	63.6	241	48.4
No	1066	34.8	21	58.3	886	35.0	159	31.9
Unknown	134	4.4	0	0.0	36	1.4	98	19.7



Figure A1. 14-day cumulative diagnosis rate (per 100,000 population) by age groups for the last 14 days.

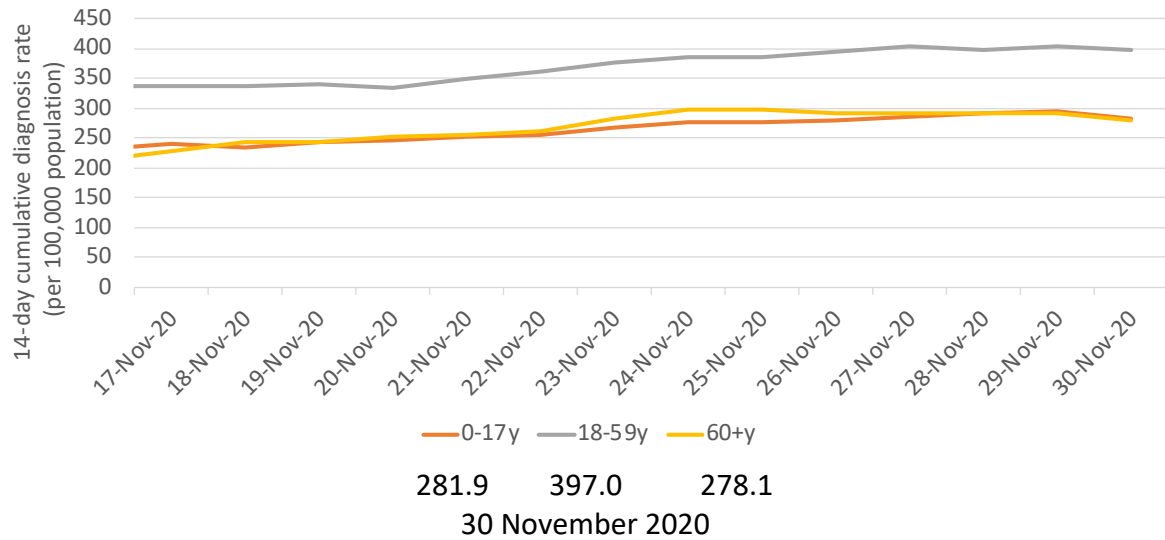




Figure A2: 14-day cumulative diagnosis rate (per 100,000 population) by district for the last 14 days.

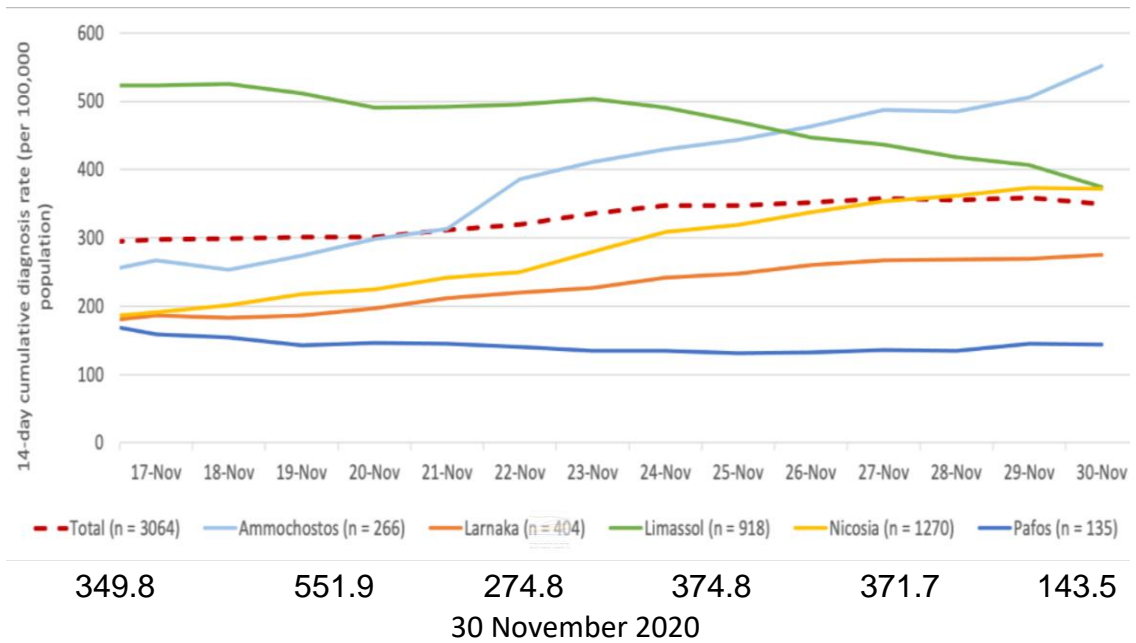




Figure A4A: Number of cases by origin of infection and by date of sample collection in the last 14 days (17 - 30 November, 2020).

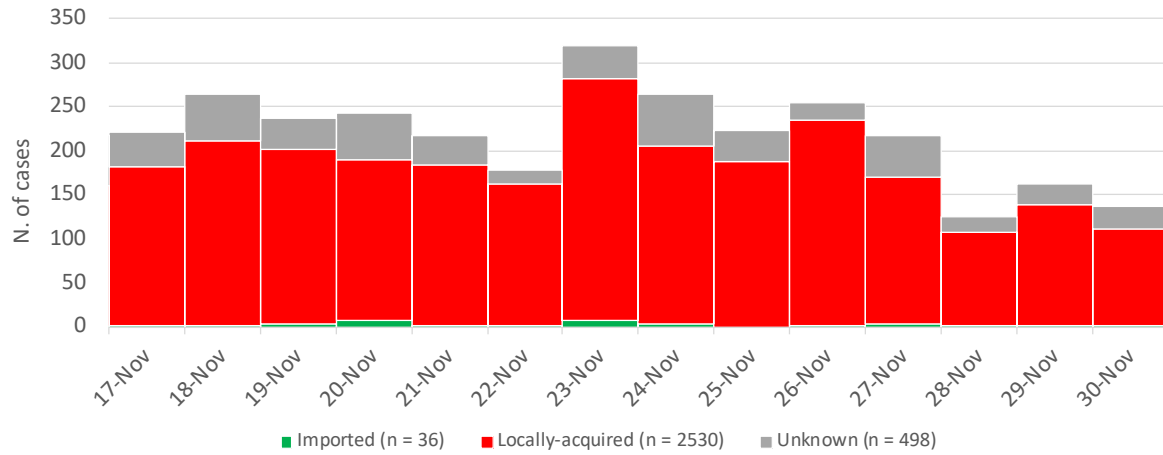




Figure A4B: Number and 7-day moving average of locally-acquired cases, by date of sample collection and district in the last 14 days (17-30 November, 2020).

